

# Harbury & Ladbroke News



JANUARY 2025



# Chauffeur Service

**Reliable**  
**Comfortable**  
**Discrete**

Events  
Meetings  
Days Out  
Airport / Seaport



Ensure that you reach your destination on time and relaxed.

**07817897813**

Fully qualified and licenced chauffeur



[bchauffeurdriven.net](http://bchauffeurdriven.net)

[warwick@bchauffeurdriven.net](mailto:warwick@bchauffeurdriven.net)

## Refuse Collection Rota

Week Commencing Monday	Thursday Collection - Harbury Friday Collection - Deppers Bridge	Wednesday & Friday Collections - Ladbroke
6 Jan	<b>F - R - G</b>	<b>F</b>
13 Jan	<b>F - W</b>	<b>F - R - W - G</b>
20 Jan	<b>F - R - G</b>	<b>F</b>
27 Jan	<b>F</b>	<b>F - R - G</b>
3 Feb	<b>F - R - W - G</b>	<b>F - W</b>
10 Feb	<b>F</b>	<b>F - R - G</b>

**F** = Food caddy - **R** = Recycling (blue bin) **W** = Waste (black bin) **G** = Garden (green bin)  
Wednesday Collection - Parts of Ladbroke - Thursday Collection - Harbury  
Friday Collection - Deppers Bridge and Parts of Ladbroke

This magazine is available by subscription and delivered within Harbury, Deppers Bridge and Ladbroke. Telephone 07900 852236 for details.

# HARBURY & LADBROKE News

*Published monthly to reflect all aspects of local life*

**JANUARY 2025**

**No. 610**

EDITORIAL .....	4
HARBURY DIARY .....	5
FROM THE RECTOR AND CHURCH NEWS .....	7
LADBROKE NEWS .....	9
CLUBS & SOCIETIES .....	10
HARBURY PARISH COUNCIL.....	20
SPORTING ACTIVITIES .....	37
EARLY YEARS & SCHOOL .....	41
LIBRARY & CLUB .....	44
GARDENING & NATURE .....	45
GENERAL SECTION .....	47

## **Editorial Office**

31 Binswood End

☎ 612155

✉ [articles@hlnews.co.uk](mailto:articles@hlnews.co.uk)

Article drop off point:  
Harbury Pharmacy,  
High Street

## **Advertising Office**

36 Manor Orchard

☎ 612687

✉ [advertising@hlnews.co.uk](mailto:advertising@hlnews.co.uk)

## **Distribution Manager**

49 Mill Street

☎ 07900 852236

✉ [distribution@hlnews.co.uk](mailto:distribution@hlnews.co.uk)

Inserts by prior arrangement with  
the Distribution Manager

## **Editorial Team**

Andy Goss – Paulette Kavanagh – Peter McDonald – Sue and David Turner  
Daralyn Warren – Jackie West

*The views of contributors are not necessarily those of the Editorial Team.  
The Editors reserve the right to amend articles as they see fit.*

**Cover Photo: Snow in Temple End by Martin Randall**



## EDITORIAL

*A round up of local news*

We hope you all enjoyed the festive season, whether it was attending church services, nativity plays, celebrations or other Christmassy events in our two villages. The Senior Citizens Christmas party held in Harbury Village Hall was as usual well attended and enjoyed by all; we feature photos in our middle pages. Once again Harbury and Ladbroke have had a lovely display of Christmas lights and in Harbury we have even longer to enjoy them as many will not be taken down until 8th February.

Two film nights to enjoy this month. Harbury Village Cinema will be showing the film 'Thelma' on Saturday 18th January, do buy your tickets in advance from the library. And the Ladbroke Matters Team will also be holding their film night on 17th January, more details about the evening will be available soon!

We were very sad to hear the news that Vikki Holroyd had passed away last month. Vikki lived in Harbury with her husband Ian for a number of years and was involved with various organisations, including our very own magazine, she was an editor from 1990 to 1997. Another long-time villager who recently died is Jean Beaumont, who for many years contributed to the Harbury & Ladbroke News by writing the Harbury WI article.

We send our condolences to the family of Jean Beaumont, Vikki Holroyd, Helen Johnson, David Rutherford and Iris Timbs.

We wish all our readers, article contributors and advertisers a very happy 2025!





# HARBURY DIARY

For local events

## JANUARY 2025

- Wed 8 Wednesday Walk, meet 9.35am, behind Village Hall - Kineton (4 miles flat)  
Quiet Space, 10.00am, Tom Hauley Room  
Knitwits and Pleasant Pastimes, 2.00 - 4.00pm, Village Library  
Spellbound Dance Classes, 5.00 - 5.30 & 5.30 - 6.15pm, Village Hall  
Hereburgh Morris Practice session, 8.00 - 10.00pm, School Hall
- Thu 9 Table Tennis, 9.30 - 10.30am, Village Hall, Tel: 01926 612951  
Holy Communion, 10.00am, Tom Hauley Room  
Harbury WI, ATS - women in the army during WWII by Sarah Brooke-Taylor, 7.30 for 7.45pm, Tom Hauley Room
- Sat 11 Coffee Morning, 10.00am - 12 noon, Tom Hauley Room in aid of Harbury Heritage Centre  
Repair Café, 2.00 - 4.00pm, Village Library
- Sun 12 1st SUNDAY AFTER EPIPHANY**  
Sung Holy Communion with Children's Church, 10.30am, Church  
Messy Church, 3.00 - 5.00pm, starts in Tom Hauley Room  
Zumba, 9.00 - 10.00am, Village Hall
- Mon 13 Harbury Toddler Group, 10.00 - 11.30am, Scout Hut  
Badminton, 10.00am - 12 noon, Village Hall  
Martial Arts, Juniors 5.45pm, Seniors 6.45pm, Village Hall
- Tue 14 Bumps & Bundles, 10.30am - 12 noon, Tom Hauley Room
- Wed 15 Wednesday Walk, meet 9.35am, behind Village Hall - Ashow-Blackdown (4 miles)  
Last day for purchasing Village Cinema Tickets from Library (film Sat 18th)  
Connections (Dementia Friendly) Café, 2.00 - 4.00pm, Tom Hauley Room  
Spellbound Dance Classes, 5.00 - 5.30 & 5.30 - 6.15pm, Village Hall  
Hereburgh Morris Practice session, 8.00 - 10.00pm, School Hall
- Thu 16 Table Tennis, 9.30 - 10.30am, Village Hall, Tel: 01926 612951  
Holy Communion, 10.00am, Tom Hauley Room  
Classic Book Group, 7.30pm, Village Library
- Fri 17 Ben & Soph's Jazz Night, doors 6.30pm / show 7.00pm, tickets via [www.ticketsource.co.uk/bsjazz](http://www.ticketsource.co.uk/bsjazz), Village Hall  
Live & Local: ARKAngel - As I Walked Out One Midsummer Morning, 8.00pm, Village Library
- Sat 18 Coffee Morning, 10.00am - 12 noon, Tom Hauley Room in aid of Myton Hospice  
Village Cinema presents 'Thelma,' doors open 6.15, film begins 7.00pm, Village Hall  
(Tickets in advance only from Harbury Library)
- Sun 19 2ND SUNDAY AFTER EPIPHANY**  
Said Holy Communion, 8.00am, Church  
All Age Service, 10.30am, Church  
Zumba, 9.00 - 10.00am, Village Hall  
Harbury Heritage Centre open - 2.00 - 4.00pm, Harbury School (Park Lane entrance)

- Mon 20 Harbury Toddler Group, 10.00 - 11.30am, Scout Hut  
 Badminton, 10.00am - 12 noon, Village Hall  
 ARTICLES FOR NEXT ISSUE TO: HARBURY PHARMACY, HIGH ST OR EMAIL TO  
 ARTICLES@HLNEWS.CO.UK BY 5.30PM  
 ADVERTS FOR THE NEXT ISSUE TO 36 MANOR ORCHARD, HARBURY OR EMAIL  
 ADVERTISING@HLNEWS.CO.UK  
 Martial Arts, Juniors 5.45pm, Seniors 6.45pm, Village Hall
- Tue 21 Bumps & Bundles, 10.30am - 12 noon, Tom Hauley Room  
 Harbury Society Members' Annual Social - pre-bookings only, 6.30 for 7.00pm, The  
 Crown Inn  
 Harbury Theatre Group, 7.00 for 7.30pm, Village Club
- Wed 22 Wednesday Walk, meet 9.35am, behind Village Hall - Stoneleigh (3 or 4 miles flat)  
 Knitwits and Pleasant Pastimes, 2.00 - 4.00pm, Village Library  
 Spellbound Dance Classes, 5.00 - 5.30 & 5.30 - 6.15pm, Village Hall  
 Hereburgh Morris Practice session, 8.00 - 10.00pm, School Hall
- Thu 23 Table Tennis, 9.30 - 10.30am, Village Hall, Tel: 01926 612951  
 Holy Communion, 10.00am, Tom Hauley Room  
 Harbury Parish Council, 7.30pm, Village Hall
- Fri 24 Harbury WI Winter Party - Bygone funny turns with Dave Moylan, 7.00 for 7.30pm,  
 Village Hall
- Sat 25 Councillors' Corner, 10.00am - 11.00am, Village Hall  
 Coffee Morning, 10.00am - 12 noon, Tom Hauley Room in aid of Godstuff  
 Harbury Local Market, 10.00am - 12.30pm, Village Hall

### **Sun 26 3RD SUNDAY AFTER EPIPHANY**

- Sung Holy Communion, 10.30am, Church  
 Muddy Church, 10.30am, starts in Tom Hauley Room  
 Zumba, 9.00 - 10.00am, Village Hall
- Mon 27 Toddler Group, 10.00 - 11.30am, Scout Hut  
 Badminton, 10.00am - 12 noon, Village Hall  
 Martial Arts, Juniors 5.45pm, Seniors 6.45pm, Village Hall
- Tue 28 Bumps & Bundles, 10.30am - 12 noon, Tom Hauley Room  
 The Collective - 'Comedy - Devilish or Divine?' 7.30pm, Shakespeare Inn
- Wed 29 Wednesday Walk, meet 9.35am, behind Village Hall - Wolston (4 miles hilly with  
 Snowdrops)  
 Spellbound Dance Classes, 5.00 - 5.30 & 5.30 - 6.15pm, Village Hall  
 Hereburgh Morris Practice session, 8.00 - 10.00pm, School Hall
- Thu 30 Table Tennis, 9.30 - 10.30am, Village Hall, Tel: 01926 612951  
 Holy Communion, 10.00am, Tom Hauley Room
- Fri 31 Mothers' Union hosting a Bread and Broth Lunch, 12.30pm, Tom Hauley Room - all  
 welcome

### **FEBRUARY**

- Sat 1 Litter Pick, 10.00 - 11.00am, meet Village Hall  
 Coffee Morning, 10.00am - 12 noon, Tom Hauley Room in aid of Harbury Senior  
 Citizens

## Sun 2 4TH SUNDAY AFTER EPIPHANY CANDLEMAS

Said Holy Communion, 9.00am, Church  
Little Saints, 10.30am, Church  
New evening worship service, time to be advised  
Zumba, 9.00 - 10.00am, Village Hall

Mon 3 Harbury Toddler Group, 10.00 - 11.30am, Scout Hut  
Badminton, 10.00am - 12 noon, Village Hall  
Martial Arts, Juniors 5.45pm, Seniors 6.45pm, Village Hall

Tue 4 Bumps & Bundles, 10.30am - 12 noon, Tom Hauley Room  
Harbury Heritage Centre open, 7.00 - 9.00pm, Harbury School (Park Lane entrance)

Wed 5 Wednesday Walk, meet 9.35am, behind Village Hall - Grandborough (3 miles flat)  
Mothers' Union party 2.30pm, Tom Hauley Room  
Spellbound Dance Classes, 5.00 - 5.30 & 5.30 - 6.15pm, Village Hall  
Hereburgh Morris Practice session, 8.00 - 10.00pm, School Hall

Thu 6 Table Tennis, 9.30 - 10.30am, Village Hall, Tel: 01926 612951  
Holy Communion, 10.00am, Tom Hauley Room  
Folk Club, 8.00pm, Village Club

Fri 7 Meeting Point, 12.30pm, The Crown Inn

Sat 8 Coffee Morning, 10.00am - 12 noon, Tom Hauley Room in aid of Hereburgh Morris  
Repair Café, 2.00 - 4.00pm, Village Library

**The Refuse Rota can be found on the inside of the front cover.**



**All Saints  
HARBURY**

## FROM THE RECTOR

*Rev. Andy Batchelor*

The Rectory, Vicarage Lane, Harbury ☎ 01926 714295 ✉ [rev.andyb@gmail.com](mailto:rev.andyb@gmail.com)

A message from our All Age team at Harbury:

Have you ever wondered what creating a massive road map on the floor of the church has got to do with Jesus? Or why 'hunt the sheep' was a great way to explain Jesus' teaching?

Have you ever wanted to sing a mixture of new songs and old traditional hymns? Or just wondered if there is an easily accessible church service for adults, teens and children.

Harbury Church's All age service, held on the third Sunday of each month is for all ages and all stages. There are opportunities to explore the Bible and its rich depth of teaching alongside a way in to explore it at a child's level.

In 2024 we studied Jesus' 'I am' sayings like 'I am the way, the truth and the life'.

In the New Year we are looking at some of the stories about Jesus and his teachings from Luke's gospel as part of the series exploring Luke in all morning services and activities.

You would be very welcome to join us. Come along and see whether it is for you. The next service is on 19th January.

**Dates for inclusion in the Harbury Diary please to:**

The Editorial Office, 31 Binswood End, Tel: 612155 or email [articles@hlnews.co.uk](mailto:articles@hlnews.co.uk)



# FROM THE CHURCHWARDENS

*Liz & Andy*

Happy New Year!

We are writing this before Christmas and looking forward to the busy Christmas period.

Harbury School will be coming for a carol service on the last day of term, our dress up nativity service is on Christmas Eve as well as having the carol service, midnight mass and Christmas morning services. We hope those of you that joined us during the Christmas period enjoyed the services and we'd like to thank all the clergy and others that took services over the Christmas period.

If you joined us in church, you will no doubt have noticed the stunning decoration and we'd also like to thank Gillian and her team for the floral pieces and all those that helped decorate the tree.

At the time of writing, we have already had our Christingle service, which was the first time for a couple of years we have held one. It was lovely to have so many children around the church with lighted Christingles singing Away in a Manger. Thank you to the Open the Book team for putting on a drama, some children from the church for joining in, and the All-Age team for leading the worship.

We had the Christmas Fayre, which was held whilst the winds were raging outside. Thank you to all those intrepid people who ventured out and came to see Father Christmas, have a glass of mulled wine, buy something from the various stalls and take part in the raffle. We raised c. £1,400 for the Audio-Visual appeal.

The New Year promises to be another busy one for the church. We are looking forward to starting a new evening service, which will take place on the first Sunday of the month, starting on 2nd February. We are still planning what this will look like, but it is likely to be relatively informal, with some worship music, teaching and prayer time. We will put more detail on our social media channels in due course, and it would be great to see you there.

If you have any questions, we can be emailed on [warden@allsaintsharbury.org](mailto:warden@allsaintsharbury.org) or phone us - Liz McBride 01926 612421 or Andy Dean 07753 497967.

## From the Registers:

### Funeral

Friday 13th December

Iris Timbs (100 years)



## MOTHERS' UNION

*Gillian Hare*

We spent the December meeting making table arrangements which proved popular at the Christmas Fair. We took £76 on the stall in cash as well as buyers using their card vouchers. After discussion, we agreed to cancel January's meeting as it fell on New Year's Day. Instead, we will have our party on 5th February from 2.30pm. Friends are invited to join us for a light-hearted afternoon and tea, please bring a small gift for the bran tub.



Chris, our leader, will be commissioned as a diocesan trustee on 11th January. Do contact her if you would like to go to support her.

And, on Friday 31st January, we are hosting a bread and broth lunch to which all are welcome. This will be in the Tom Hauley room from 12.30pm with donations invited towards our Branch running costs. These include the gift of a Bible to couples marrying in Harbury and Ladbroke.



## LADBROKE NEWS & DIARY

### JANUARY 2025

Wed 8 Heritage and Friendship Group, 10.30am - noon, The Old School  
Parish Council, 7.45pm, Village Hall

#### Sun 12 EPIPHANY 1

Holy Communion, 9.00am

Tues 14 Table Tennis, 7.30pm, Village Hall

Fri 17 Film Night, 7pm, Village Hall

#### Sun 19 EPIPHANY 2

Holy Communion (BCP), 9.00am

Mon 20 ARTICLES FOR NEXT ISSUE TO: HARBURY PHARMACY, HIGH ST OR EMAIL TO  
ARTICLES@HLNEWS.CO.UK BY 5.30PM

ADVERTS FOR THE NEXT ISSUE TO 36 MANOR ORCHARD, HARBURY OR EMAIL  
ADVERTISING@HLNEWS.CO.UK

Tues 21 Table Tennis, 7.30pm, Village Hall

#### Sun 26 EPIPHANY 3

Holy Communion, 9.00am

Tues 28 Table Tennis, 7.30pm, Village Hall

### FEBRUARY

#### Sun 2 EPIPHANY 4

Family Service, 10.30am followed by refreshments

Tues 4 Photography Club, 7.30pm, Village Hall

Wed 5 Heritage & Friendship Group, 10.30am - noon, The Old School

Thu 6 WI, 7.30pm, Village Hall

### February Edition - Harbury Ladbroke News



**Adverts to:** 36 Manor Orchard, Harbury or e-mail to  
advertising@hlnews.co.uk by Monday 20th January



**Articles to:**  
Harbury Pharmacy, High Street or e-mail to  
articles@hlnews.co.uk by 5.30pm, Monday 20th January



# LADBROKE CHURCH NEWS

Peter Rigby  
[www.ladbrokechurch.org.uk](http://www.ladbrokechurch.org.uk)

Before Christmas we were saddened to lose two long standing stalwarts of our church, first Pat Kennedy (mother of Sue Moore) and then David Rutherford, who had lived for many years in the Old Rectory. The church was full for both funerals and appreciations of their lives appear elsewhere in this edition.

Back in October we held our Harvest Brunch and (in addition to the gifts of produce received) raised £250 in cash that was given to Southam food bank as vouchers. These have been distributed as Christmas presents to those in need and I have been asked to pass on the thanks of the Co-ordinator and volunteers to all those who made this possible.

At the time of writing there is still a week to go to Christmas and the decorations have just gone up; thank you once again to the Collins family for donating the church's Christmas tree. We have also just enjoyed an excellent concert by the Spa Chorale, formed by a merger of Spa Opera and our own Ladbroke Choir, who presented a programme of Christmas music and readings to an audience of more than 50.

By the time this is read those decorations will probably be down again, but we hope to have celebrated Jesus' coming with an Evensong Carol Service on the Sunday before Christmas, our Crib Service on Christmas Eve and of course a service on Christmas Day itself.

As we look forward to 2025, may we wish you a very happy new year.

## From the Registers:

### Baptism

Sunday 24th November                  Ethan Moore

### Funeral

Wednesday 18th December          David Rutherford

## Services in January:

Sunday 5th January	10.30am	Family Communion
Sunday 12th January	9.00am	Holy Communion
Sunday 19th January	9.00am	Holy Communion (BCP)
Sunday 26th January	9.00am	Holy Communion
Sunday 2nd February	10.30am	Family Communion

[www.ladbrokechurch.org.uk](http://www.ladbrokechurch.org.uk)    [ladbrokechurch@gmail.com](mailto:ladbrokechurch@gmail.com)



## LADBROKE & DEPPERS BRIDGE WI

Dianne Surgey

A good number of us went to Binley to see Lesley Smith as Florence Nightingale. As always, Lesley a medical historian, was superb. She told us a lot about Florence's early life and how it led her to nursing. The event was very well attended and, as usual, a great opportunity to

RECTORY FARM COTTAGE, HARBURY ROAD, LADBROKE, CV47 2DF

# SEAL

ROOFING SOLUTIONS

Our services include:

- Pitched roof repairs & replacements
- Traditional & modern finishes
- Flat roof replacements
- Fascia & guttering replacements

Contact Terry

07506535419

[sealroofing@outlook.com](mailto:sealroofing@outlook.com)

**Checkatrade.com**  
Where reputation matters

# Auction Sales & Valuations

Valuation, collection and auction service of individual items through to complete property and commercial clearances.

Call for a free no obligation quote or email [info@leauktion.co.uk](mailto:info@leauktion.co.uk)

**SALE ENTRIES NOW INVITED**

[www.leauktion.co.uk](http://www.leauktion.co.uk)



**LOCKE & ENGLAND**  
AUCTIONEERS & VALUERS

01926  
889100

18 Guy Street,  
Leamington Spa,  
CV32 4RT



**HOMEBUYER SURVEYS,  
BUILDING SURVEYS & VALUATIONS**

If you need honest and pragmatic advice, but also appreciate a friendly face and heaps of enthusiasm, then Karena is the lady to go to for all your surveying solutions.

- RICS Chartered Surveyor
- RICS Registered Valuer
- RICS Level 2 & 3 Property Surveys
- Short Property Reports
- Party Wall Awards
- Valuations for Help to Buy, Shared Ownership & Probate
- Over 33 years' experience



Please contact Karena for more information.

01926 612121 / 07752 134874

[admin@greenchameleon.net](mailto:admin@greenchameleon.net)  
[www.greenchameleon.net](http://www.greenchameleon.net)



**F**rank  
**M**ann  
**F**armers



- Commercial & domestic mowing
- Fencing ■ Landscaping & more

*"Attention to detail"*

Michael Mann or Emma Mann

Tel: **07759863269 / 07931491417**

[michael.mann1@btinternet.com](mailto:michael.mann1@btinternet.com)

[www.frankmannfarmers.co.uk](http://www.frankmannfarmers.co.uk)

catch up with members of other WIs in the area. Our Christmas meal at Draycote was a great success and thoroughly enjoyed by all who were able to attend.

We look forward to meeting again in 2025 when our first meeting on Thursday 2nd January will be at Southam bowls club to have a go at Kurling. There are lots of exciting events planned for next year both in our own WI and in the Federation. Meanwhile do have a look at the many courses available on the WI Learning Hub which is free for members. We welcome new members to join our friendly WI.



## LADBROKE MATTERS

David Wright

As you may have read in the leaflet which arrived in your letterbox last month, the Village Hall and Millennium Green are separate registered charities whose admin and finance are overseen by a group of trustees, and we are delighted that Anthony Tierney was recently elected onto our board of trustees.

The upkeep of the Village Hall and Millennium Green is the responsibility of all of us who live in Ladbroke so our larger Ladbroke Matters team takes care of maintenance and organises fundraising events.

The more you support us with your skills, time, and/or money, the more we can continue to maintain these facilities for the benefit of us all. Our website at [www.ladbrokevillagehall.org.uk](http://www.ladbrokevillagehall.org.uk) contains photos of the interior and exterior of our village hall and general information. We would welcome new team members, so if you would like to join us get in touch via the form on the website contact page.

### Friday Night at the Movies

We are delighted to announce that our next supper and film night is scheduled for Friday **17th January** in the Village Hall. The film title and further details will be ready very soon – so keep an eye open for Nicky's email for more information. Contact her on [nicolalewis1958@gmail.com](mailto:nicolalewis1958@gmail.com) if you would like to be added to the film night circulation email.

### The Millennium Green

If you have walked through the Millennium Green recently you will no doubt have seen our new play area and read about it in the previous issue. You may also have spotted that the 'trim trail' (wooden climbing structure) has become rotten and partially collapsed: we are considering what to do about this. On a brighter note, a new picnic bench has been sponsored by the Alibone Trust and was installed in December.

### Last Chance To Keep Those Blue Discs Piling Up!

To help raise money for improvements to the play area we have sought funding of up to £1500 from the Tesco Community Fund. So when you are shopping at Tesco in Southam, don't forget to pick up some blue discs and vote for the Ladbroke Millennium Green play equipment. *Voting closes on **12th January** and we need our pile of tokens to be the biggest to secure the full £1500. Thanks to Helen Morten for arranging this.*

## Our Silver Jubilee

Next year will be the 25th anniversary of the opening of the Millennium Green, so to celebrate this occasion and our new play area, we are planning to hold a village fete with live music, food, and other activities on the Green on **Sunday 25th May**. We hope to see you all there, so please make a diary note now.

## Hall Bookings

Our hall has a small kitchen, a stage area with sound and lighting, and can accommodate up to eighty people. So to book your special celebration, or if you wish to hold regular classes or meetings, contact us **through the village hall website or telephone** Debs on 07779 225105.

From 1st October our hourly booking rates increased to £16 per hour, or £13 for Ladbroke residents to cover the additional cost of heating during the Winter months. The rates will revert back to £15 and £12 on the 1st April.

Non-residents may be asked to pay a £50 deposit on booking.

## Ladbroke Village Hall Millennium Draw for November 2024

£50 Sarah Taylor	£25 Martin and Debra Neal	£10 Richard Walker
£50 Josh Robison	£25 Helen Hay	£10 Emma Hampson
£25 Caryl and Chris	£10 Trevor and Jan Jay	

Thanks to everyone for their continued support. Very best wishes to you all for 2025 from Ladbroke Matters.

**Margaret Bosworth**



## LADBROKE PHOTOGRAPHY CLUB

*Kip Warr*

At our December meeting we had a competition and discussion topic about photographs of models and other small things. We saw some excellent pictures of slot cars (like Scalextric - taken at our June meeting) and other models. We also saw some fascinating detail of the security measures in bank notes. Our attendance was down due to the colds that have been afflicting so many and we hope the ailments will all have run their course well before we meet again on 7th January at the Bell for our annual dinner. Finally we held an extraordinary general meeting to modify our rule about cash holding.

On 4th February we shall have a workshop on photographing water droplets which will demand precise focusing and a quick trigger



*Slot cars - Steve Gale*

finger. The 4th March meeting will be our AGM, during which we shall gather ideas for our programme, and have a competition on shots taken at night. Visitors, guests and new members are all welcome to our meetings which are usually in Ladbroke Village Hall on the first Tuesday of the month. For more information please contact [ladbroke.photoclub@btinternet.com](mailto:ladbroke.photoclub@btinternet.com)



*Miniature train - David Hannan*



## LADBROKE GENERAL NEWS



### LADBROKE HERITAGE

*Jackie West*

#### **“One of the Finest Hill Organs”**

A few weeks ago we were visited by two German organists who are keen to see, and play, pipe organs made by W Hill & Sons, a prestigious company that made organs not just for the UK but the British Empire for almost two centuries.

William Hill (1789-1870) was the founder of the company. His son Thomas (1822-93) was responsible for building the largest organ in the world for the Sydney Town Hall (1889). His son, Arthur George (1857-1923) succeeded him and built organs which maintained classical principles while providing semi orchestral sounds to satisfy the fashion in the early years of the 20th Century. Many of the finest instruments were built for cathedrals, colleges or concert halls, places that could afford to buy a new organ, or rebuild an old one when fashions changed, making originals all the more precious to those who respect the as-built sound of Hill organs.

For example the magnificent organ built for Adelaide Town Hall which first played to the public in 1877 was enlarged in 1889, rebuilt and altered in 1970 and then replaced in 1989. Five years later it was taken out of storage and moved to Tanunda where it underwent a 15 year restoration. It is now a tourist attraction in that town in the wine-growing Barossa Valley in South Australia, though it may be temporarily closed while a regional arts centre is developed around its location.

So where does Ladbroke's pipe organ fit in with its illustrious siblings? Ours was built specifically for Ladbroke Church as part of the 1876 restoration led by Sir George Gilbert Scott and, according to the accounts, cost £527 9s and 6d. It was located in the chancel and remained there for nearly 100 years before being moved to the west end of the north aisle in 1969, where it has stayed ever since. I remembered we had some correspondence in the files from Hill's to the Rev Errington (the Rector in 1876) and gave copies to our German visitors. One reads as follows - and anyone who has managed multiple contractors on a project can empathise!

Jan 13, 1876

My dear Mr Errington

*I did tell Mr Watson to sink the floor 9 inches if he could, under the organ, but after what you say about the concrete being laid, I think it would be better to make the organists floor and that of the organ of one level and not sink the 9 inches beneath the organ proper. My only object was to get room for the pedal couplers over the bellows but this we can manage by raising the manuals somewhat and altering the shape of the bellows wind box.*

*The floor will of course be wood under the organ.*

*We shall be able to carry out Sir G Scott's design for the additional £25 I mentioned, exclusive of carving which he wishes to have done elsewhere.*

*Believe me*

*Yours very sincerely*

*Mssrs Hill*

Hannes and Martin, the visiting organists, were most impressed with our instrument and wrote in our visitors book "One of the finest Hill organs". Hannes has a Facebook page, called Hills Angels and having seen on that pictures of other pipe organs they visited on the same trip, such as that at Birmingham Town Hall, Turvey in Bedfordshire and Eton College, this accolade for Ladbroke's is certainly not due to its decoration or number of pipes.

As they told us, what they really valued was the fact that the organ had not been altered over the years so what they heard as they played it, was the sound that Thomas Hill and his co-workers intended.



### Heritage and Friendship Group

We shared a wonderful lunch in December and our meeting on 8th January will be on the topic "New year celebrations and resolutions". In February we expect to revert to the first Wednesday of the month. For more information about the group or to let us know you are coming, please contact Carol on 814715.



### FAREWELL TO TWO AMAZING MEMBERS OF OUR COMMUNITY

Jackie West

The last few weeks of the year saw Ladbroke Church packed full of family and friends of two people who had lived long, fulfilling and fascinating lives. The obituaries which follow are based on extracts from family tributes given at their memorial services.



# TONY'S ROOFING

Roof repairs - Tiles/Slates,  
Re-pointing, Ridges,  
Leadwork, Chimney repairs,  
Flat roofs (torch on felt),  
Velux windows fitted,  
UPVC Soffits, Fascias & Guttering,  
Gutters cleaned

**We won't be beaten on price.**

**All work guaranteed**

**Tel: 07881 411265**



# FENCES & TREES



**All types of fencing and gates**

**Tree felling and reduction**

**Hedge laying and trimming**

**Patios**

**Seasoned logs available**

**Call Adrian Dollar on**

**01926 817077 or**

**07914 623989**

**Qualified and Insured**

# Domestic Gas Services



**Are your radiators cold  
at the bottom?  
If so they need  
POWERFLUSHING!**

- **POWERFLUSHING** removes the build up of sludge and sediment in your radiators which is making them less effective therefore *costing you money!*

- **POWERFLUSHING** will maximise the efficiency of your radiators ensuring you get the very best from your heating system therefore *saving you money!*

**POWERFLUSHING....the next best thing to a  
new heating system!**



For a free quote call Martin on **07980 740720**



# Modern Homes

for everything inside your home



Call to book a free consultation on 01926 883 338



As a family business in our 56<sup>th</sup> year of trading we are proud of our exceptional levels of customer care and quality of service.

Let our award winning team manage the planning, design and installation of your new kitchen, bathroom and bedroom.

We will guide you at every stage from concept to completion, ensuring a stress free experience that delivers the room of your dreams.

We have a fantastic team of quality tradesmen from bathroom and kitchen fitters to plasterers, plumbers, builders, carpenters, tilers, decorators and many more. Whatever your project involves we can provide the help you need.

With a wide range of products from market leading British suppliers, quality and value for money is guaranteed.

No matter what your style and taste we can come up with a design perfect for you.



Find us on Facebook and Twitter

[www.modernhomesleamington.co.uk](http://www.modernhomesleamington.co.uk)

[info@modernhomesleamington.co.uk](mailto:info@modernhomesleamington.co.uk)

37 Longfield Road, Leamington Spa, CV31 1XB

### David Rutherford (1936 - 2024)

David, father of five children, church Warden at Ladbroke for many years and former High Sheriff of Warwickshire, was a man of diverse interests and talents. He developed resilience early, for while his father was in Burma during WW2, his immediate family evacuated to Canada where they stayed with various relatives. After the war the reunited family lived in London and David thought it was exciting to be put on a train to travel from London to his prep school on the Wirral.

Rugby school followed and then Magdalen College, Oxford where David read classics and also excelled in rowing, helping the Dark Blues win The Boat Race in 1959 and again in 1960. He spent one summer holiday with two friends travelling to Greece and the wilds of Yugoslavia in an old Riley car stuffed full of the things they might need on their two month adventure. It's thought this trip inspired his lifelong love of equipment, logistics and organisation.

After Oxford, David married Jane and worked first for Courtaulds in Coventry, then in an import/export business in Stratford before returning to Oxford as fundraiser for the Bodleian Library. David and Jane loved Ladbroke Church and living next door in The Old Rectory where they entertained shooting and tennis parties, hosted two daughters' weddings and held many other events. David was an intellectual, very interested in history and culture and had a fantastic memory for artworks he had seen decades before. He played bridge right to the end and after the christening of his first great grandchild recently had the energy to go to the opera afterwards. A real character.



*David and Jane with a painting of their Ladbroke home for 50 years*

### Pat Kennedy (1926-2024)



Pat was born in East London, she was half-Italian and both parents came from large families. She herself had four sisters and one brother and they grew up surrounded by a large extended family, initially in a tenement flat in Tower Hamlets, much like you see in *Call the Midwife*, one of Pat's favourite TV programmes. Life was a struggle but she told the next generation it was the same for everyone in those days. In June 1939 the family moved to Dagenham to a brand new house with a garden and bathroom but three months later Pat and two sisters were evacuated, leaving at 6.30am with their belongings in pillow cases and name tags on their coats. They went to Suffolk, her first taste of living in the countryside.

In 1945, now an 18 year old lass, Pat joined the Women's Land Army and was sent to a farm in Essex as a dairymaid and there she met the head dairyman, Don, her future husband. Her first experience of married life was on a small farm in Lancashire, next her husband secured a job as Farm Manager in Claverdon, followed by a council small-holding in Wolston. A few years later they achieved their dream, a farm of their own, Old Ford Farm Southam. Their large farmhouse had 8 bedrooms, no central heating but large inglenook fireplaces and a Rayburn in the kitchen; for Pat this was heaven. The house was full of noise, warmth and love for all who lived there or came through the door - not only Pat and Don's own four children, her mother and aunt who lived with them and two live-in farm hands, but also many relatives and friends that came to stay, sleep over or for parties. Pat was a great cook, filled the rooms

with flower arrangements, tended the kitchen garden and worked extremely hard to keep on top of all the washing, with no automatic machine in those days.

She was also a talented seamstress with nothing too difficult - she made her own ballgowns, or too much trouble, such as mending her boy's motocross gear and sewing the numbers on their shirts. Her needle and thread repaired the altar frontals and made new collection bags for Ladbroke church and her green stage curtains for Ladbroke Village Hall gave sterling service for decades; they were only replaced a couple of years ago. In her later years Pat managed to prise her husband away from the farm and they retired, first to Napton and then back to Southam, just up the road from their farm and where she loved her new garden. When her husband moved into Galanos House, she stayed on there for a while before moving back to a farm, to live with her daughter and son-in-law. But Pat was still independent and driving around in her little red car until she was 90.

She was a lovely and loving lady, interesting and interested in others, who is remembered fondly by her friends and many relations.



## HARBURY PARISH COUNCIL

*John Holden - H&L News Correspondent*

***Official minutes can be viewed on the Parish Council website  
www.harbury-pc.gov.uk or obtained from the Parish Clerk, Tel: 01926 614646***

### **Meeting – 28th November 2024**

As Parish Council meetings go, there was a sizable audience; most there to make their objections known about the planning application to demolish Pool Cottage and build two town style houses on the site. Peter Walshe highlighted a number of concerns including, the development inappropriate for the Conservation area and claims that it was a 'brown field site' were not correct. It was also made with no reference to the Neighbourhood Development Plan. The owners of the neighbouring properties also expressed their concerns with the development with overshadowing resulting in loss of light and privacy.

Paul Winchester also spoke about his application to extend a bungalow in Hall Lane. The property only takes up one third of the land, was a relatively small extension and parking would be increased at the front. The Bungalow would also be modernised.

Cllr Thompson reported that the Village Hall had a new projector and it was noted that Harbury Future Energy had received a grant to purchase a thermal imaging camera.

SoA DC Cllr Ostrander reported that the new South Warwickshire District Plan would be out for consultation from next January to March 2025. It was important for there to be a plan in place, otherwise developers would have a free reign to build where they wished. Cllr Ostrander handed Councillors some initial plans for proposed areas for development. The Chairman noted that these show the area around Chesterton Windmill and the Roman fort as potential sites!!

WCC Councillor Kettle is paying for gully cleaning out of his delegated budget. However he has found out that 25% of gulleys attended to remain blocked after jetting. He will be taking this further. The County Council is finding that Academy Schools are excluding children often with special needs more often than the County controlled school used to. However WCC has no control over these academy schools but then has the responsibility to find school places for these excluded children.

**Planning** - there was no representation to tree work at a house in Pirie Close, the extension to a bungalow in Hall Lane or to the breach of agricultural tenancy conditions at Roseleigh on Bush Heath Road. The Council would object to the demolition of Pool Cottage, citing the comments made above and concerns over the proposed car parking. Also no mention over what stone was to be used and no reference to local need. With the proposed house on land at the rear of 5 Farm Street, the Council had already made an objection. There was surprise that WCC Highways had made no comments about the proposed vehicle access onto the bend in Mill Street.

Paul Quinney reported that the pathway through the car park extension had been completed. However no tenders had been received for the work to install the car charging points. Discussions would be held with WCC on how best to progress this.



**Properties** - The juniors football team wish to introduce a wet marking systems for the lines on the pitches. The current white powder gets quickly washed away and the pitches have to be marked every two weeks. This would be more expensive and the club was looking to the PC to fund this. Agreed to look at this at the forthcoming budget setting. The rents for the allotments will be rising to £40 for a full plot and £20 a half plot next October.

WCC Highways are not agreeing to the forming of an entrance in the Hall Lane wall to provide access to the allotments there. Councillors were surprised at this considering County Highways were happy for the proposed access for the new house on Mill Street which they considered was far more dangerous. They asked WCC Cllr Kettle to see if a site visit from the appropriate officer could be arranged to view the proposed Hall Lane allotment access.

Some of the Councillors and other volunteers had recently spent many hours putting up the seasonal lights around the centre of the village.

However it had been noted that the Tree of Light display outside the Library was not there this year. The Chairman explained the background to this. The Tree of Light had been initiated in 2018 after the conifer that stood outside the Library had been taken down. There used to be lights hung in the tree and this acted as a memorial to those Villagers who had passed away. It was not known how the lights display had originally been funded but it was not part of the village lights provision by the PC. The lights had been left permanently fixed to the Library but had been taken down earlier this year amid concerns about their condition having faced the elements for six years.

Councillors agreed to offer the Library support to provide an interim display of some sort for this season. Then to have further discussions on how best to provide a more fitting memorial in future years.

**(Note:** subsequent to the meeting the Library Committee examined the lights and thought they were ok to be re-installed which was done)

**Next Meeting** – Thursday 23rd January 2025 at 7.30pm in the Village Hall.

**Current Parish Council members contactable via the Parish Office are:**

Tim Lockley (Chairman), Julie Balch (Vice-Chair), Samantha Allen, Christopher Bradley, Kate Gard, Alan Knowles, Ed Mulley, Alex Potter, Robert Stockdale, Keith Thompson.



# HARBURY SOCIETY

David Turner

## Back Tracks – Detecting the Past

Colin Clay and Phil Taylor use new technologies to show features of the landscape which have largely disappeared.

On the evening of Tuesday 19th November a large number of people turned out to attend our meeting on a very cold, wintry night.

Colin gave his presentation first by showing us a 1610 John Speed map of Warwickshire and said he wanted to show us landscape features of the area, some of which are hidden and require a bit of technology to tease them out. He said that how they investigate landscapes initially is remotely, by using their computers – he called it armchair archaeology.



*Phil and Colin answering questions at the end of their talk*

One tool they use is LIDAR – light detecting and ranging, similar to sonar but using millions of pulses of laser light transmitted from an aircraft. The reflected energy is measured by sensors on the aircraft and a picture of the ground surface is constructed with precise accuracy revealing many hidden features at ground level.

We were shown a LIDAR image of Ufton Fields Nature Reserve showing countless contours and ridges.

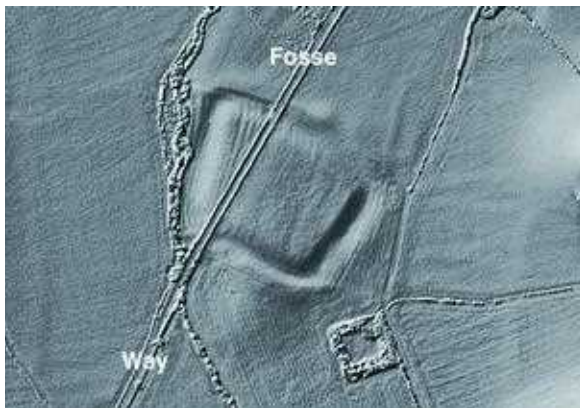
He said that it was while doing orchid conservation work with Warwickshire Wildlife Trust 25 years ago that he met Phil and they had been friends since then.

We then looked at an image of the Roman Camp astride the Fosse at Chesterton.

Next Colin pointed us in the direction of another valuable resource which is a website called Open Domesday, where specific data in the Domesday Book can be searched. The entry for Harbury (Erburberie) has been recorded as having a population of 42 households in 1086, listed with five owners and is among the top 20% of settlements in the country.

Another valuable tool they use for exploring sites is Google Earth Pro where, by simply typing in a place name, it will show an aerial picture which can be magnified up to reveal hidden features such as hut circles.

Looking at Google Earth and LIDAR pictures of the deserted village of Wormleighton, roads and hollows are visible together with the outline



*LIDAR picture of the Roman camp at Chesterton*

of a moated manor house. This was the family home of the Spencer family (of which Princess Diana was a descendant). Sir John Spencer, who was knighted by Henry VIII, threw the people off the land to enable sheep to graze. The house was abandoned in 1619.

Colin recommended using a website called Magic Defra for accessing information such as parish boundaries and scheduled ancient monuments.

A LIDAR image of Long Marston was shown to us; this is not a deserted village but a shrunken one. There are still some houses there, but LIDAR reveals a much larger village. They believe it is one of the best they have seen and it also reveals the nearby deserted village of Willicote.

Next we saw a satellite photo of the village of Wappenbury, which is situated within the earthworks of an Iron Age fort and a LIDAR image of the corresponding area reveals even more detail. Its history dates back to Roman times as pottery of the period has been identified.

We looked at some roads next. Phil and Colin were metal detecting just over the border in Northamptonshire and realised that a bridgeway they were on must have been the Salt Way running all the way from Droitwich to Northampton. An image of the area has revealed an Iron Age hill fort, which unfortunately isn't a scheduled monument, and a series of squiggles show how it is being degraded by motor cycle scrambling.

A LIDAR image of Kenilworth Castle reveals a vanished lake known as the Mere that had been created in 1414 by Henry V. On the far side was an area known as the 'Pleasance' which had to be reached by boat. A feature of the LIDAR software is it allows you to 'digitally flood' the image with water filling dips and depressions to give an indication of the size of the original Mere. A member of Kenilworth History and Archaeology Society has created a 3D image of the Castle together with the Mere by using LIDAR images.



*A 3D image of Kenilworth Castle together with the Mere* Credit [www.superplan.info](http://www.superplan.info)

After this Colin handed over to Phil Taylor who showed us the route of a ridgeway, an Iron Age trackway, which starts at Kineton and goes through a circular churchyard at Chadshunt. Phil thinks this has pagan origins because the entrance points towards where the sun would have risen on the winter solstice. After Bishops Itchington it reaches Harbury along Ivy Lane into Church Terrace and down Bull Ring Farm Road to Ufton. It crosses the Fosse Way (which it pre-dates), into Hunningham and ends at the Iron Age hill fort at Wappenbury.

Phil told us that he was responsible for finding the Hunningham Treasure Trove, which actually consisted of just three silver coins, each 50 metres apart, dating from the reign of the Roman Emperor Vespasian, 69 to 79 AD. The fact they were silver and fairly close together, qualifies them as treasure trove.

Vespasian was, apparently, quite keen on implementing taxes and as farmers were taxed on their land, it is highly likely that his taxes influenced the size of fields. The Romans used a unit of measurement called an 'actus' which is the equivalent to 35.5 metres or 116.4 feet or 120 Roman feet (pedes). Phil informed us that many fields owe their size not to the enclosures but to a much earlier time when the Romans farmed the land and the size was determined for taxation purposes.

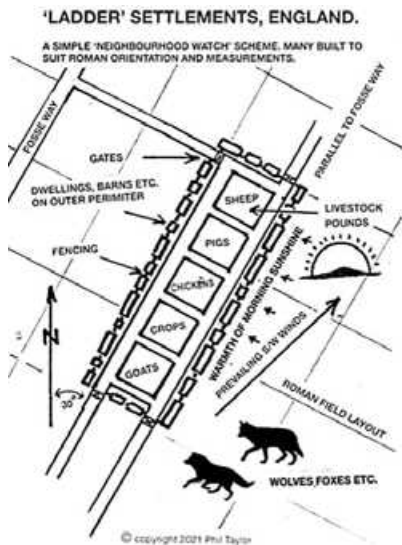
Phil referred to Wellesbourne Hastings, which has a street layout that resembles a ladder and Phil was curious why this should be, so he measured the distance between the 'rungs' and found that they corresponded exactly to the actus unit. The 'ladder' pattern is replicated in many other villages and Phil said that when a square field is encountered it often equates in size to the actus. Southam has a ladder pattern close to the Crown Inn in Daventry Street. Each field within the ladder shape would probably have had a different purpose.

Deppers Bridge apparently has fields that, without exception, correspond to whole actus measurements.

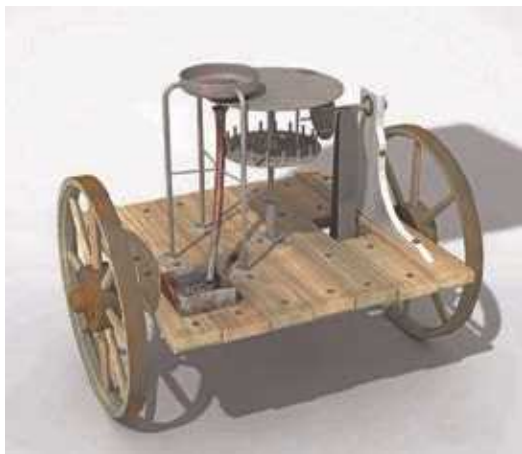
We were shown a model of a Roman odometer. This is a cart which dropped a pebble into a container with every rotation of its wheel enabling distances to be measured.

A resource that is available on Google Earth Pro are aerial photographs taken by the Luftwaffe in the 1930s. By clicking on the clock symbol a time slider becomes available. The Ministry of Defence found 16 tons of aerial photography near Berlin in 1945 and Google Earth Pro lists that date because that was when they were acquired. It's interesting to compare Harbury between 1945 and 2021 using this tool. By zooming out it's possible to see how extensive the Luftwaffe's aerial photography had been.

That completed Colin and Phil's talk and, after answering a number of questions from the floor, they were thanked by Chair, Ed Wilson, for a superb talk and enthusiastically applauded.



Example of 'Ladder Settlement'



Reconstruction of a Roman odometer





# Sun Rising

Natural Burial Ground  
and Nature Reserve

Lower Tysoe

A place of deep peace where loved ones can be laid to rest in growing woodland and wildflower meadows.

All are welcome at this beautifully managed site.

01295 688488 sunrising.co.uk



## W. Goodwin & Sons Funeral Directors

38 Coventry Street, Southam  
CV47 0EP

Telephone: 01926 812445

Private Chapels of Rest  
Monument Service provided



*Generations of Care*

# R. Locke & Son

Independent Family Funeral Directors - Est 1853

Caution Corner

**BRAILES**

OX15 5AZ

t: (01608) 685274

Southam Street

**KINETON**

CV35 0JN

t: (01926) 640386

No. 6 The Precinct

**WELLESBOURNE**

CV35 9NL

t: (01789) 840744

As a family owned business serving our local area, we take great pride in offering a dedicated and compassionate service.

For more information about our services, to view our funeral announcements and online donations, please visit

**[www.rlockeandson.co.uk](http://www.rlockeandson.co.uk)**

Traditional / Simple services - Direct Cremation  
Natural burial - Pre-paid funeral plans

**Golden Charter**  
Funeral Plans 



# MB CARPENTRY AND KITCHENS

TRANSFORMING SPACES BEAUTIFULLY

Kitchens Supplied And Fitted

TEL: 07494471217

Email: [Mbcarpentryandkitchens@gmail.com](mailto:Mbcarpentryandkitchens@gmail.com)

[www.Mbcarpentryandkitchens.co.uk](http://www.Mbcarpentryandkitchens.co.uk)

## T.M. & J.M. GREY

## BUILDERS

**KITCHENS - BATHROOMS - WINDOWS & CONSERVATORIES**

**EXTENSIONS - ALTERATIONS - RENOVATIONS**

**GREY GABLES, 46 BANBURY ROAD, SOUTHAM CV47 1HJ**

**☎ Southam 01926 817744    Mobile: 07885 495384**

**Email: [tmgrey@tiscali.co.uk](mailto:tmgrey@tiscali.co.uk)**

## HARBURY PARISH COUNCIL

Unit 2, Bull Ring Business Centre  
Church Terrace, Harbury CV33 9HL

Tel: 614646

Website: [www.harbury-pc.gov.uk](http://www.harbury-pc.gov.uk)

Open: Monday - Thursday  
10.00am - 12.00pm

### CHAIRMAN:

**Tim Lockley**

Email: [chair@harbury-pc.gov.uk](mailto:chair@harbury-pc.gov.uk)

### CLERK:

**Alison Biddle**

Email: [clerk@harbury-pc.gov.uk](mailto:clerk@harbury-pc.gov.uk)

Parish Council meetings are  
open to the Public.

To speak on any issue, please  
contact the Parish Clerk

## Harbury Village Library & Biblio's Café

### Harbury Village Library

Browsing & Borrowing, Click and Collect, Home Delivery and Takeaway Shelves for Children's and Adults' Books, Audio Books, Jigsaws, and Board Games. Public Access Computers, WiFi access and Printing Facilities, Events & Activities, Food Bank Collections, Recycling Boxes, Art Gallery, Books & Greetings Cards by local artists for sale.

### Biblio's Café

Offering a selection of hot and cold drinks, cakes and baked goods either served at your table inside the cafe or as takeaway items

Please check the Harbury & Ladbroke News, on Social Media, [www.HarburyVillageLibrary.org.uk](http://www.HarburyVillageLibrary.org.uk) and village notice boards for information about current opening times



Harbury Village Library, The Wight School,  
High Street, Harbury CV33 9HW  
01926 258276

- [library@harburyvillagelibrary.org.uk](mailto:library@harburyvillagelibrary.org.uk)

## Links

### Maps

- National Library of Scotland (NLS) – [maps.nls.uk](http://maps.nls.uk)
- MAGIC-Defra – [magic.defra.gov.uk](http://magic.defra.gov.uk)

### LiDAR

- National Library of Scotland (NLS) – [maps.nls.uk](http://maps.nls.uk)
- Houseprices.io – [houseprices.io/lab/lidar/map](http://houseprices.io/lab/lidar/map)
- Lidarfinder.com – [www.lidarfinder.com](http://www.lidarfinder.com)
- QGIS (make your own) – [qgis.org/en/site](http://qgis.org/en/site)

### Satellite

- [earth.google.com/web](http://earth.google.com/web)
- Bing – [www.bing.com/maps/aerial](http://www.bing.com/maps/aerial)

## Dates for your Diary

**Tuesday 21st January** – Members' Annual Social at The Crown, Harbury.

**Tuesday 18th February** – 'Swifts' – a presentation by Amanda Randall.

**Saturday 8th March** – Coffee morning in the Tom Hauley Room.

**Tuesday 18th March** – 'Cicely Lucas' – a presentation by Christine Cluley, award-winning historian and researcher who has worked on Heritage Education projects at Warwickshire Record Office and Museum.

**Tuesday 15th April** – 'Archaeology in Harbury' – a presentation by Ed Wilson, archaeologist.

**May** – TBC – Details to follow.

**Saturday 17th June** – Annual Harbury Carnival.

**Tuesday 15th July** – Bat Walk in Harbury.

**Tuesday 19th August** – Harbury Tour & Tea.

**Tuesday 16th September** – Presentation by Martyn Brunt from Sustrans.

**Tuesday 21st October** – Presentation by Bill Timson, Chair of Harbury Heritage Group. Subject TBC.

**November** – TBC – Details to follow.

All talks are held in the Tom Hauley Room. Doors open 7.30pm with the presentation starting at 7.45pm. All welcome – no need to book. Free to Harbury Society members – visitors £2 (pay at the door).

If you would like further information about the Harbury Society or would like to become a member, please contact Sue Turner, Secretary, on 07917 055920, email [sue@turners.co.uk](mailto:sue@turners.co.uk) or visit the website [www.harburysociety.org](http://www.harburysociety.org)



## HARBURY WI

Mary Thompson

At the end of November, 17 members assembled in the Tom Hauley room for a Christmas Craft afternoon. Our thanks to Heather, Lin, Judith and Sally for their inspiration and all the material they provided.

Our Christmas celebrations commenced on 9th December when 15 members attended the Group Carol Service in Stockton Church. After each Carol, representatives from the WIs

present read some delightful Christmas poems. The evening concluded with mulled wine and mince pies and gave us the opportunity to catch up with members from neighbouring WIs.

Our Christmas meeting on 12th December started on a moment of sadness when we remembered Helen Johnson – a long time member who died at the beginning of December. For a number of years Helen helped to organise the raffle at our monthly meetings. Our thoughts are with Helen's family.

Our speaker was Natalie Dalton King who is very involved with Living History events including Warwick Castle. Natalie entertained us with her knowledge of events between 1100 and 1470. The Black Death in 1453 had killed 50 million people and this affected cleanliness. Society was very rigid – you couldn't eat or do things beyond your station. The Catholic Church ruled everything including what you could eat. Natalie brought us examples of vessels used for cooking on an outdoor fire including cast iron cauldrons – residents would put as much food as possible in the cauldron so it all cooked at the same time. This was a very interesting talk and we enjoyed the gingerbread which Natalie bought us to sample.



We start the New Year on 9th January when Sarah Brooke-Taylor will be telling us about women in the army during World War 2. Visitors are always welcome – 7.30 for 7.45 in the Tom Hauley room.

The Winter party will be held in the Village Hall on Friday 24th January – 7 for 7.30pm. Members are asked to let one of the committee know what food they are bringing to share – don't forget to bring your own drink and glasses. The speaker will be Dave Moylan who entertained us at the Group meeting in June. This time his talk will be entitled "Funny Turns"

The Cinema returns on Saturday 18th January when the film will be *Thelma*, a 2024 American comedy drama starring June Squibb and Richard Roundtree. This tells the story of 93 year old Thelma Post who gets duped by a phone scammer pretending to be her grandson. Tickets will be on sale in the Library and should be purchased by Wednesday 15th January - cash or card.

Finally we were sorry to hear that Jean Beaumont has passed away. Jean was a member of Harbury WI for many years – a very enthusiastic committee member. Jean loved attending meetings, going on outings and taking part on our carnival floats and walking tableau. A village character who will be missed – our thoughts are with Jean's family.



# HARBURY THEATRE GROUP

*Celia Stockdale*

## Hello theatre lovers!

We are delighted to write that our comedy production entitled 'Knickers' was a great success and we thank the many people who came to watch and support us. We have had great feedback, including phrases such as "It was phenomenal, a fabulous production". The play was a combination of pathos and comedy and seemed to hit just the right notes with our audience. Talking of notes, we were also entertained by our own Brittany who sung for us at the interval. So thanks again to everyone who took part in any form and especially you, our audience, who came to watch – we couldn't do it without you!



Overall, 2024 proved to be a busy year, with our May and November productions and a stall at the Harbury Carnival in June.

If you are interested in meeting us, you are welcome to join our monthly meeting 21st January 2025 7 for 7.30 at the Village Club. As usual, we always welcome new members to our monthly meetings or to auditions. If anyone would like to be involved in any aspect of the group, please contact [harburytheatregroup@gmail.com](mailto:harburytheatregroup@gmail.com)

Finally, we will be putting on our next production on 15th – 17th May 2025 so make a note in your diaries!



## FOLK CLUB

*Ian Hartland*

The theme for Harbury Folk Club number 455, "Wind and Rain", had been set a month earlier without the benefit of an accurate weather forecast. On the evening of the club meeting, weather warnings were in force for windy and rainy conditions, which may have kept some performers away. If only Lottery predictions could be so accurate?

The evening commenced with The Harvesters performing "What Have They Done To The Rain?" and the Buddy Holly classic, "Raining In My Heart". Peter Mason followed with renditions of Simon and Garfunkel's "Kathy's Song" and "When Winter Comes Howling In".

Bob and Ann took the stage next with the combined song and instrumental "Winter Winds" by Sandy Denny and Pete Grassby's "Malvern Hills". Rik was the next performer and sang Jake Thackray's "Old Molly Metcalfe", a tragic tale of a farmer's demise. He followed this with "The Robin Adair", a story of race between two clipper ships. Dave Fry reminded the audience of the conditions outside with Dougie MacLean's "Wild And Windy Night" and evoked more than a few memories with his fine version of The Cascades' "Rhythm Of The Rain". Colin Pitts is a familiar name on the wider Folk scene and had travelled from Evesham to perform. His self-penned songs "October Winds" about a memory of a girl at a fairground, and "The Rolling Ramillies" about a family member's time on a battleship, were very well received. Pete Grassby completed first-half proceedings with "The Stranger", on which he accompanied his singing with a Shruti box, and "The Fosseyway Shanty" which substituted lorry drivers for the more traditional sailors.

The second half was started in fine style by Peter McDonald, singing Steve Knightly's "Tall Ships" accompanied by Margaret who recited The Wreckers' Prayer in between verses. He then gave us "Four Strong Winds" by Ian Tyson. Richard was next to the 'stage' and sang "When The Snows Of Winter Fall" and "Those Big Far Away From You Blues". Don was up next with his fine arrangement of "In The Bleak Midwinter" with George Harrison's "Here Comes The Sun" performed as an instrumental interlude in the familiar carol. He was then joined by Bob and Ann for the song, "Walking On The Waves". Pete Bones sang The Spinners' popular song "Ellen Vannin" about a shipwreck in the Irish Sea, and then wielded his melodeon for "The Dog In The Microwave". Given his performance in the first half, it seemed only right to offer Colin the opportunity to sing a couple more of his songs to round off a fine evening of entertainment. His song about a girl in a red coat from his latest album was followed by the humorous "I'm A Fence Man".

The raffle raised a creditable £51.00 for Myton Hospice. Next month's Folk Club may have been and gone by the time you read this, but it will be/have been run by Peter McDonald, with the more cheerful theme of "Fun and Games".



## HARBURY TWINNING ASSOCIATION

Ron Temple

Our Association held its Christmas party at the Tom Hauley Rooms a couple of weeks ago and everyone had a great time. Early in January we will have another gathering to celebrate La Fête des Rois, or the Festival of Kings, which I know will be as equally enjoyable.

May this year will see us visiting our friends in Samois-sur-Seine and we are currently discussing with them the actual dates and what we will be doing during our stay.

In the meantime may I wish you all a Happy New Year or Bonne Année.





## FREE ANTIQUES VALUATION DAY

St Francis of Assisi Church Hall,  
110 Warwick Road, Kenilworth CV8 1HL

**Thursday 13th February 2025 | 10am - 2pm**

**Bring along your Antiques, Gold,  
Jewellery, Watches, Silver and Collectables**

Items may be consigned into Auction

Free Home Visits for large/multiple items,

House clearance and downsizing advice Probate and Insurance Valuations

For further information please contact Hansons Warwickshire 07470 459309

e: [clivejones@hansonsauctioneers.co.uk](mailto:clivejones@hansonsauctioneers.co.uk) [www.hansonsauctioneers.co.uk](http://www.hansonsauctioneers.co.uk)

Hansons Derbyshire, Heage Lane, Etwall, Derby, DE65 6LS

**Refreshments in aid of WCS Care**

## CONGRATULATIONS, THANKS & ACKNOWLEDGEMENTS



If you would like to include:

- \* A birthday message
- \* Congratulations to anyone for their achievement
- \* Wedding or special occasion wishes
- \* Thanks to someone

We will be more than happy to include your message in the magazine.

There is no charge for this, just email your message to [articles@hlnews.co.uk](mailto:articles@hlnews.co.uk) or drop it into Harbury Pharmacy by the advertised deadline date.



# SENIOR CITIZENS CH





# CHRISTMAS PARTY 2024





New Roofs • Roof Repairs  
Flat Roofs • All repointing  
Dry Ridge and verge systems  
Guttering  
Fascia & Soffit fitted

CALL STEVE  
**07974918098**



# HARBURY HERITAGE CENTRE

Bill Timson

Happy New Year! A time for making resolutions and, hopefully keeping to them, at least beyond January! Why not make your New Year's resolution to visit the Heritage Centre in 2025 **or better still become a volunteer and get involved in archiving Harbury's History?**

We have spent recent Monday mornings sifting through Mike Bloxham's collection of photographs, kindly donated by his family, in an effort to have them better organized for visitors to peruse. There are several hundred prints, both in black and white and colour format. One of the frustrating things is that we do not have information about many of the early black and white ones and we would welcome the readers' help in identifying people, places and events. We intend to launch an idea at our coffee morning in January (Saturday 11th) that hopefully will solve this problem.



The photo sorting task is necessary to make the collection more organized and accessible, not the most exciting part of being a volunteer but nevertheless part of our housekeeping. More interestingly, we are still receiving emails and letters from people who have been associated with Harbury and these provide vital clues in delving further into the village's past. Correspondence from Peter Wall, born in Ivy Lane (Co-Operative Terrace) together with his sister Sally, has provided information about village life in the 1940s and Peter also donated original documents relating to Bull Ring Farm from the 1800s as well as a Co-Op passbook and his father's notes on growing up in Bishop's Itchington before he married and moved to Harbury. We are very grateful to Peter, who now lives in Surrey, for getting in touch.

Bob Sherman, who many of you know, brought in a document to a recent open day, relating to the sale of houses in Church Terrace; we have made a copy and it has been transcribed. Thank you, Bob.

Michael and Ann Vincent donated letters sent by Wendy Bennett, whose family lived in 'Sunnyside', South Parade; these also provided information about Harbury back in the early 1900s. Thank you, 'The Vincents'. The collection grows and we now have over **600** short documents catalogued for our visitors to access. If you find anything 'Harbury related' please bring it along; we can scan photographs and documents while you enjoy tea and biscuits in the Heritage Centre. Look out for our Open Days at the end of this article.

## **HARBURY 50 years ago**

The village magazine celebrated in May last year fifty years since its first edition. 1975 saw the first full year of its production and I would like to delve into that year's editions to highlight some of the news from that time. The Harbury News as it was then known, was printed monthly, the January / February edition consisted of 16 pages. It was advertised as *'A Monthly Publication covering all aspects of local life'*.



The map on the front has a few things missing and some changes have also taken place to village amenities over the last 50 years. **Can you spot them?**

*The early editions of the magazine were published with the help of All Saints Parochial Church Council – the vicar was Rev F.R. Mackley. The village policeman was the late PC Tim Percival and there were lots of reports from village groups and organisations about events over the Christmas period. The Parish Council had met in the previous November and it was a ‘very chilly meeting’ as there was no heating in the Farley Room!*

*Petrol had risen to 75p a gallon and it was suggested that people car-share to help cut costs.*

*You can find out more news from 1975 by visiting the Heritage Centre where we have a complete searchable collection of the Harbury and Ladbroke News magazines. They also have a website [www.hlnews.co.uk](http://www.hlnews.co.uk)*

## Open Days

**Public opening times remain the same in 2025. We use the Park Lane gate entrance to the school which is signposted and the pathway is lit during the winter months.**

**First Tuesday in the month 7pm - 9pm and Third Sunday in the month 2pm - 4pm.**

Our website gives 'up to date' information and can be accessed via [www.harburyheritage.org.uk](http://www.harburyheritage.org.uk)

You can email us with requests '[group@harburyheritage.org.uk](mailto:group@harburyheritage.org.uk)'

We have a Facebook page 'Harbury Heritage Centre' where you can post photographs etc. and join in threads, thus providing more information to add to the collection.

**Finally** - Our fund-raising coffee morning is in the Tom Hauley Room on **Saturday 11th January at 10am** – come along and support us please. Raffle prizes welcome!



## HARBURY RUGBY FOOTBALL CLUB

*Steven Kittendorf*

Harbury has been on a roller coaster ride so far this Season. Riding high by the end of October we had played seven, won six and sitting 2nd in the league. Standout moments include defeating rivals Claverdon at home and then securing a handsome win away to Broadstreet. However, if you feel a BUT coming then you're right, because since November we hit the big dipper; played five, lost four on the bounce before recovering against Coalville at home winning 21-16. This was a satisfying reversal having lost over at their place back in September 22-19. Two great matches played in the true Rugby spirit.



The four losses went something like this. Away to Earlsdon 28-20 where we put in a poor first half performance before changing things around at half time to give a better showing for the remainder of the match. Home to Southam 16-22 where the visitors deserved the win whilst we scraped a losing bonus point. Home to Stoke Old Boys 26-33 where we got dragged into a physical and ferocious game instead of sticking to our own game. Finally, away to Aston Old Edwardians 29-5 played in the face of Storm Darragh. Gale force winds meant this was not a game that would allow Harbury to play their wide expansive fluid style of rugby.

Since the end of October, the 2nd XV played three won three. The first away to Manor Park for a league match 50-12. The second, a friendly at home against Southam 52-10 and finally away to Birmingham Solihull 26-40.

With the number of quality players Harbury have on their books, we are the envy of many Clubs in Warwickshire as they struggle to maintain player numbers. However, this doesn't help the frustration we have to endure as we struggle to find suitable opposition to play against as has happened these last couple of weeks.

Whilst the Colts lost their unbeaten run of the season they were back to winning ways in their most recent friendly fixture.

The Juniors have completed the group stages of the Warwickshire Cup competition and had a mixed bag of results. All the age groups are now into the Plate part of the competition. The U14s face Camp Hill away (19 Jan), the U15s face Old Laurentians at home (12 Jan) and our U16s face Old Leamingtonians away (Jan 19).

The Minis had fixtures against Old Laurentians, Earlsdon and Old Leamingtonians.

Mini and Juniors Christmas party on Sunday 22nd December with lots of fun and games planned to include the infamous Egg Rugby! Back into action on Sunday 5th January.

If you have kids that are interested in getting involved, we run age groups from the age of four up to seventeen, including a junior girls touch team, give our Chair, Chris, a call on 07834 972999 or drop us an email on [harburyrfc.enquiries@gmail.com](mailto:harburyrfc.enquiries@gmail.com).

Have a healthy and prosperous 2025.



## HARBURY TENNIS CLUB

*Colin Mercer*

<https://clubspark.lta.org.uk/HarburyTC>

Happy New Year! Briefly going back to Christmas, we enjoyed a lovely evening at the Crown for our celebrations which included presentations to winners of the Players' Player of the year and the Club Member of the year. There were lots of nominations from members and a reminder of how much people do for the club. The winners were Jeunine Crabtree and Ian Reynolds.



Most of the league matches avoided the wet and windy weather, and in the weekend format Harbury go into the New Year at the top of Division 3 of the Banbury Winter league. Their unbeaten record was maintained after drawing at Warwick in a top of the table clash. Jane Minchin, Sue Johnson, Alejandro Pinero, and team captain Joe Robson made the short trip and had an extremely close match with all eight rubbers being halved. Jane and Sue nearly made it an away win but just lost out in a very close final set tiebreak.

In the Floodlit league the long-awaited A team versus B team match took place on a freezing evening. The A team of Jeunine Crabtree, Sue Panton, Ben Fish and Josh Marshall were the hosts for this one, up against Lucy Ewen, Jane Minchin, Tom Woodhead and James Edge. The A's were just in front at half-time, but the B's came back in the mixed doubles and got a deserved draw. These included the closest and longest rubber with Jane and James





## WHAT'S COMING UP...

**CLOSED ALL DAY**  
**Monday 13th January**

We are closed for the staff to have a well-earned rest and enjoy some belated celebrations, thank you all for your understanding!

**OUR 3RD BIRTHDAY HERE AT THE BELL!**

On Sunday 9th February The Bell will be turning 3 years old!  
Thank you all for your ongoing support - we truly appreciate it!

**VALENTINE'S CELEBRATIONS**

**Friday 14th February & Saturday 15th February**

Join us for great drinks and delicious food with our special 'Valentine's Sharing Menu' and speciality Cocktails. Whether you're celebrating with your special someone or enjoying the night with friends, we have the perfect setting for you.

**QUIZ & CURRY NIGHT**

**Monday 24th February**

Brad is back to host our famous quiz, come and join us for a night of fun and hopefully answering a few questions along the way. We will be serving Curry at half time - as always you will need to book!  
£12.50 per ticket

**MOTHER'S DAY**

**Sunday 30th March**

Make this Mother's Day unforgettable with a delightful set lunch here at The Bell!  
Book your table now and treat Mum to the celebration she deserves.

**EASTER WEEKEND**

Enjoy fun for all the family from 18th - 20th April with our 'Easter Extravaganza Hunt' out in the garden, with some Easter themed specials and some speciality cocktails for you to enjoy!

**THE BELL'S FARMERS MARKET**

**Friday 18th April**

We're excited to announce that the Farmers' Market will be returning in April!  
Join us for fresh produce, local goods, and community fun for the kids too!

**SPRING QUIZ AND CURRY**

**Monday 28th April**

Get ready! Brad is returning to put your brains to the test with another thrilling quiz!  
Booking is essential, £12.50 per ticket.

**MILLENNIAL GREEN PARTY**

**Sunday 25th May**

Celebrate the opening of the refurbished Millennial Green here in Ladbrooke Village.  
The Freespirit Foodtruck will be there with delicious food and drinks!  
Keep an eye out for more details.

**WEEKLY DEALS**

**PIE NIGHT**, Every Tuesday tuck into a Chef's pie and a complimentary select drink  
**STEAK NIGHT**, Every Thursday enjoy delicious, local sourced steak with a complimentary select House Drink

**HAPPY HOUR**, Every Friday from 4pm-7pm every Friday

Draft Beer: £4.75 a pint (Excludes Guinness & IT)

House Wine: 175ml Glass of one of our House Wines £6.00

Prosecco: Glass of Prosecco, just £6.50

[www.bellinnatladbrooke.co.uk](http://www.bellinnatladbrooke.co.uk)

# Harbury Village Cinema



## Saturday January 18th 2025

Tickets available from

**Harbury Library**

Cash or card.

Please buy tickets by 15th January.

**No tickets will be sold on the door.**

Doors open 6.15pm Film begins 7pm

Tickets are

£13.00 to include fish'n'chips

& 2 raffle tickets

or £7.50 to include 1 raffle ticket only

Licensed

Bar.

**LIVE**  
& LOCAL



**Moving Pictures**



narrowly beating Sue and Josh 7-5, 7-5. Rumour has it that the other four had adjourned to the Shakespeare before it finished to get warm and order the first round!

The Pickleball trial has been very popular and coach Ian Shorrocks will be starting it again on Friday 10th January, 2.00pm, along with his other sessions 4.00-5.00pm Mini Reds (4-9 years), 5.00-6.00pm Greens (10 years+), 6.00-7.00 pm Adult Beginners, 7.00-8.00pm Adult Cardio. Ed Spilman's Ladies' Coaching session will start on the same day, 9.30-10.30am and he can also offer coaching on Monday afternoons. For more details of any of the above, please contact Lianne Candappa at: [Lianne@coolsportz.co.uk](mailto:Lianne@coolsportz.co.uk) or phone/text her on 07919 104093.



## HARBURY TODDLER GROUP

*Emily Montague and Chrissie Field*

We have had so much fun this term at Toddlers! Our Christmas party finished off the year with a bang; we had a Christmas elf who came to dance and sing with us, and a visit from Father Christmas who gave each child a party bag to take home. We'll be back in the New Year, please keep an eye on our Instagram/Facebook for updates.



We'd like to give a special shout out to Emma Browne, who recently stepped down as treasurer. Her help in getting everything up and running has been invaluable and we couldn't have done it without her. A big thank you from everyone at Toddlers.

As always, parents, grandparents, carers of babies, toddlers and preschoolers are all welcome to join us. We have toys, sensory tuff trays, crafts, stories, snacks and singing.

We run every Monday during term time, from 10.00-11.30am in Harbury Scout Hut. The sessions cost £2 for the first child, and £1 per additional sibling. Refreshments included. Please follow us on Instagram [@harbury\\_toddlers](https://www.instagram.com/harbury_toddlers) or on Facebook (search for Harbury Toddlers) for updates and sneak peeks.

Looking forward to seeing you and your little Toddlers at a session soon.



## Christmas

We have just returned from our Pre-School Christmas Nativity at the Church. Watched by a church full of parents and carers, the children were absolutely brilliant. They dressed up as Mary and Joseph, Kings, shepherds, angels, a sheep, cows and a beautiful star and sang amazingly.

At the end we sang some Christmas songs and signed the Makaton version of Silent Night.

We are extremely proud of all of them as it is not easy performing in front of an audience.

We are extremely grateful to Reverend Andy and Julie Batchelor for enabling us to use the church and to the parents and carers for their support.

The children have also been making Christmas cards and decorations for their families and our Pre-School tree. They have each had a turn at adding a decoration to the tree.

The cards were made with fir tree branches which were glued onto the card and decorated by the children using miniature pom poms. They have also made and painted a little Christmas tree out of clay.

We have set up a cosy 'Christmas home corner' with twinkly lights, blankets, books, a few wooden children's toys and sofas.

## Mud Kitchen

We swapped out the mud for water play outside in the mud kitchen and added a range of berries, leaves, twigs and extra resources. We have also added some goblets and kitchen utensils and the children have been making no end of lotions and potions. The mud kitchen has become a firm favourite with many of the children.

## Christmas Party

Next week, we are looking forward to our end of term Christmas Party with lots of party food, party games, singing and a visit from Father Christmas himself.

## Thank you

The staff would like to say thank you for the Christmas gifts and cards that we have received from parents.

We would also like to say a huge thank you to all the parents and children for their support this term. We are very excited about welcoming back the existing children and meeting some new faces in January.



The staff and children at Harbury Pre-School would like to wish you all a very Merry Christmas and a Happy New Year.

If you would like further information, or to register a child for Harbury Pre-School, please e-mail [enquiries@harburypre-school.org.uk](mailto:enquiries@harburypre-school.org.uk) text 07907 598461 or look at the web site [www.harburypre-school.org.uk](http://www.harburypre-school.org.uk) You can also find us on Facebook.



## HARBURY PRIMARY SCHOOL

Lucy Bosley - Headteacher

*To love, learn and grow together.*

*"Let us not love with words and speech but with action and in truth" 1 John 3:18*

A big thank you to **e-Wheels** for helping us to move our **Reverse Advent collections** to local Foodbanks. We had an overwhelming response and it took a few car journeys to move all the food! Thank you to all the families who contributed.

### Posada

This year we have had a Posada for each class, where children have been taking it home each evening and writing about what they are thankful for. Thank you to members of Harbury community for making this happen.



Some of you may not know what a Posada is... well... It is Spanish for 'inn'. It is a Christmas activity which lasts from 16th – 24th December when small versions of Mary and Joseph travel around different households. The Posada stays for one evening and then begins the journey again. Finally, the Posada will end up at All Saints Church for everyone to read what Mary and Joseph have been up to.

Happy New year from all at Harbury CE Primary School.



# HARBURY SCHOOL PTA

Alice Mellings

## Happy New Year!

Thank you to all who attended our wreath making workshop, it was lovely to come together as a community and make some wonderful homemade decorative wreaths for our doors.



We also held two drinks receptions for Harbury schools, Carols by Candlelight and the Nativity, along with our Christmas Raffle. Thank you to all the local

businesses who supported us with amazing prizes, including Harbury Milk Shed, Emiza Nails and Beauty, The Shakespeare, The Street Chef and The Bell at Ladbroke to name a few.

Total raised in December: £1400 for the School's PTA! Thank you.

Our next big project: we are looking to raise over £16k for iPads for our school and we have many projects lined up in order to reach this goal!

Next Event: School Disco... Watch this space!!

## We need your help

Using Easy Fundraising can raise FREE donations for Harbury School PTA EVERY time you shop online. Over 8,000 brands will donate for FREE! Please use the QR code on the right to sign up today!



# HARBURY LIBRARY & BIBLIO'S CAFE

Michael Luntley

## Happy New Year

New Year, new things going on. Our first 'Live & Local' show is on Friday 17th - touring company 'ARKangel' are performing 'As I walked out one midsummer morning' - a re-telling of Laurie Lee's classic account of his journey from the Cotswolds to the Spanish Civil War. Tickets available from the Library desk or online from Ticketsource - search 'Harbury live & local'. We have another touring company in February - watch the usual sources for posters advertising that.

Having worked hard to weed out old books from our stock we are starting to think about buying some new ones. Recommendation slips are available on the cafe tables. Do tell us what sorts of book you like to borrow, what books you recommend to your friends. Help us re-stock with books that you'd like to read. And, more generally, watch out for where the whiteboard ends up when we re-open, and perhaps leave a note there if you have a book you would recommend to other users.

New groups are finding their feet in the Library building....it has been a pleasure to see the

new Home School Group launch so successfully, addressing a real need. In February we will be welcoming a representative from NHS 'Social Prescribing' who will be available every month for consultation. A flyer detailing our regular weekly, fortnightly and monthly group meetings/societies/book groups/concerts, etc., can be found on the cafe tables and posted in our new dedicated Library noticeboard on the front wall.

How the building is configured when we re-open is still an open question. The commissioning date for the new heating system is, as I write, not secured. Some things take longer than you thought....! Once done we will set to and work to make the whole space as open and welcoming as possible.

Look forward to seeing you soon.



*The recent closure of the High Street for installation of new electrical supply to the library - photos by Bill Timson*



## GARDEN JOTTINGS

*Christine Dakin from Bridge Nursery*

The start of a new year brings a certain amount of optimism, a fresh approach perhaps and a determination to make your garden better than before. But things have changed over the last couple of generations, some good, some not so good. The withdrawal of many garden chemicals should help prevent the reduction of beneficial insects and creating more wildlife areas is also a positive thing. The weather seems less predictable (or is that my poor memory?) which can mean it's harder to stick to a plan especially when growing any crops. More fruit and veg plus cut flowers are imported. Tomatoes and garlic from China? Is that really what people want? Home grown produce is usually tastier and definitely fresher.

I see too many examples on social media of 'garden makeovers' where there is mostly paving and astro turf but no plants, perhaps some folk can't begin to understand the benefits of gardening and greenery for their physical and mental well-being.

Instead of hours indoors pondering nostalgically it is time to get out and check for emerging snowdrops, flowering primroses and winter jasmine. Visiting winter gardens can be very uplifting at this time of year.



**Bridge Nursery, Tomlow Road, Napton | [www.bridge-nursery.co.uk](http://www.bridge-nursery.co.uk)**

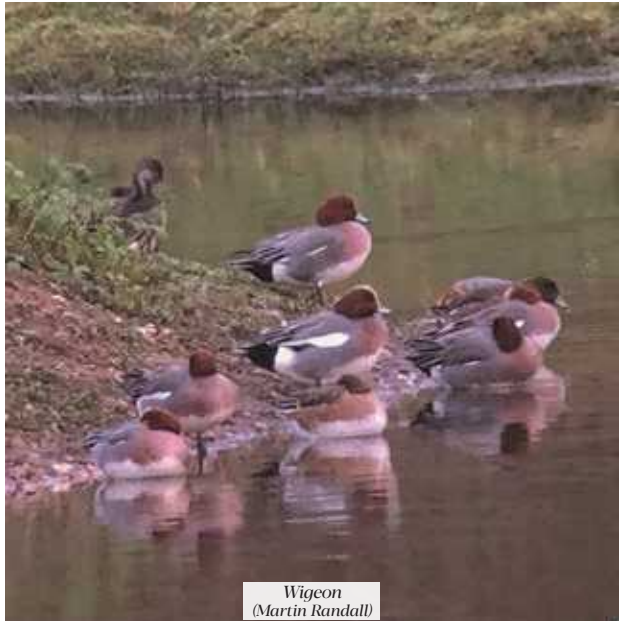


## NATURE NOTES

Martin & Amanda Randall

As we are writing this, we are looking forward to the New Year and thinking about the wildlife and nature we will be able to enjoy. We have resolved to go to more of the local nature reserves in Warwickshire during 2025, so we will be able to report back on our visits in future editions of Nature Notes. We particularly like Brandon Marsh since it is a large area with a variety of different habitats. The wetland there is a good place to visit in the early months of the year because it holds a good variety of waterbirds. The various species of ducks at this time of year are all in their fine breeding plumage, having moulted from their drab autumn feathering.

One of our favourites is the wigeon, it is a medium-sized 'dabbling' duck with a round head and small bluish-grey bill that has a black tip. The male wigeon has a creamy yellow forehead that contrasts with the rich chestnut of the rest of its head and neck and the greys and subtle pinks of its body plumage. They also have a large white wing patch and show their white bellies when in flight. Female wigeon are similar in appearance to mallard females, though a little smaller, with rusty brown plumage and a pointed tail. They have a dark green coloured patch on their wing feathers, whereas in a female mallard this patch is an iridescent purple.



Wigeon  
(Martin Randall)

A particularly endearing trait of the wigeon is their call. Instead of the familiar harsh 'quack' of the mallard, wigeon make a soft whistling sound, which is very evocative, especially when heard through the early mist on a winter's morning.

Wigeon are mainly winter visitors from Scandinavia, Iceland and Russia, with up to 450 thousand individuals at UK sites. They favour wet grasslands, floodplain meadows, flooded gravel pits and reservoirs with gently sloping edges where they can easily get out onto the grassy banks. A few wigeons breed in central and northern Scotland and also in northern England, but only about 200 pairs. Typically, they breed at one year old and, on average live for about three years; although the oldest record was of an individual of 34 years, from a 1996 ringing record.

A visit to Brandon will also be interesting to see how the current work on the reed beds is progressing. The Warwickshire Wildlife Trust, whose reserve it is, are working hard on this project with the hope that they can attract bitterns, rare members of the heron family. In the

past, bitterns have been attracted to the reedbeds at Brandon Marsh and, once the restoration work is completed, it is hoped that the birds will return and breed. We did once see a bittern at Ufton Fields nature reserve, but only very fleetingly. The other treat at this time of year at the reserve is the incredible sight of flocks of starlings wheeling around the sky as dusk approaches when they come to the reserve to roost overnight. You may remember our photos of starling murmurations that appeared in last year's Nature Notes (January 2024).



Bittern  
(Aidan Semmens on Pixabay)

Closer to home, our garden in fact, we have been concerned recently about the very few blackbirds that have been visiting, despite there being food here for them. Blackbird numbers usually increase at this time of year with an influx of migrants from further north. Perhaps they have delayed their journeys due to warmer temperatures in their northern breeding grounds. Blackbirds were the fifth most spotted bird during the RSPB Big Garden Birdwatch in January 2024. It will be interesting to see whether that frequency is maintained in this year's count, which is on the weekend of 24th to 26th of January.

You can find more details using the QR code here or use this link: [www.rspb.org.uk/whats-happening/big-garden-birdwatch](http://www.rspb.org.uk/whats-happening/big-garden-birdwatch)



## HARBURY GENERAL NEWS



### OBITUARY

*Katie Holroyd*

#### **Vikki Holroyd (1951-2024)**

Vikki Holroyd passed away peacefully on 16th December 2024, aged 73. Born in Sheffield in 1951, she is survived by her husband, Ian Holroyd and her daughter, Katie Holroyd. Vikki was a long-time resident of the Harbury area. She married Ian Holroyd at All Saints Harbury in 1990 and they lived at the Old Chapel House on Mill Street, and later just outside the village. Vikki was very active in the village, she taught at Harbury C of E Primary School in the 90's, headed up the Youth Club, was an editor of the Harbury & Ladbroke News, spent much time in The Old New Inn, and of course making many appearances at Harbury Rugby and Cricket Club with Ian over the years!

Vikki lived an 'Absolutely Fabulous' life. Come celebrate that fabulous life with us at All Saints Church, Harbury at 11.30am on Friday 17th January.



## Local Plan: Update

I thought it would be helpful to report on the developing joint Local Plan with Warwick District Council which, when implemented, will set out planning policy for the period 2027 to 2050. Various aspects of this lengthy and complex process emerge from time to time, into the public domain. The whole proposed plan will be subject to public consultation. Once adopted the Plan will set out how both Councils ensure delivery of the infrastructure, open spaces, employment sites and homes up to 2050. The plan will be the basis upon which all planning applications will be determined in a way that supports those needs and how we address the pressing issues around climate change, biodiversity, connectivity, and residents' wellbeing.

As a result of earlier work, it was agreed by the Joint Cabinet Committee of Councillors of Stratford and Warwick Districts that a pattern of distributed growth across the whole district in small towns and villages was undesirable and that growth would be planned on a strategic basis led by environmental considerations whilst supporting economic factors.

As you may have seen in the news, the Government are revising the National Planning Policy Framework (NPPF). Although the Government has not finalised the numbers yet, it is clear they are looking to tell planning authorities everywhere to build many more houses in the future. The 'Standard Method' calculation will require us to build housing at something like the same rate we have done in the last few years. So, if we don't want to keep adding new

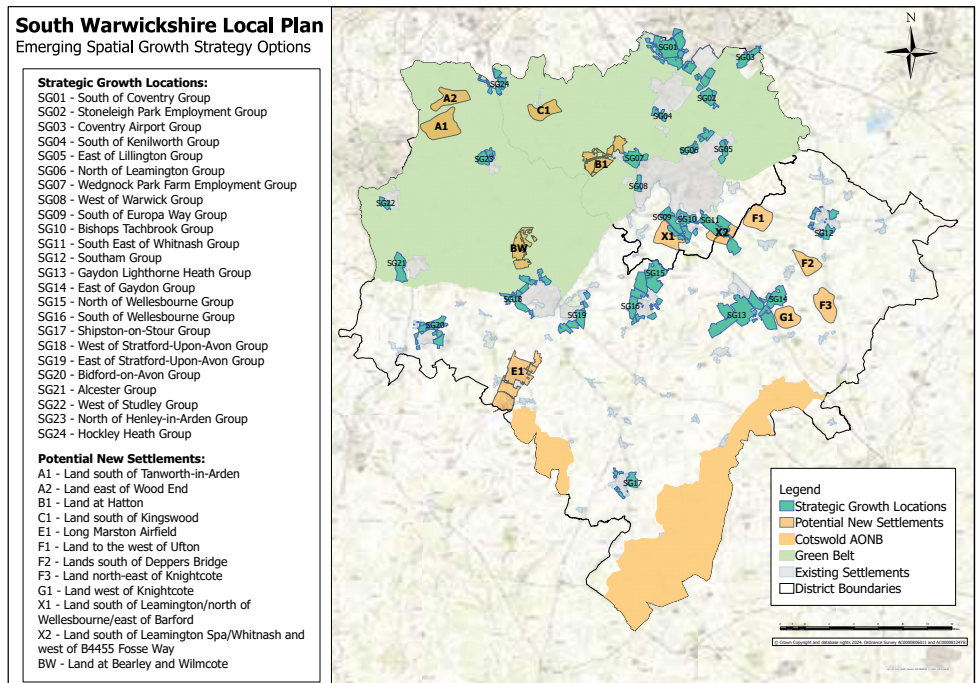


Figure 1



houses and commercial sites on the edges of villages, it will mean building all-new villages with their own shops, businesses, schools and other infrastructure.

Officers and planning consultants have been looking across Warwick and Stratford District areas at very many potential sites for new villages. This has been narrowed down to a list of 12, but to meet the Government's expected target, only three new settlements are probably needed (see Figure 1). **There will be a public consultation from 10th January to 7th March.** As part of the consultation, a targeted call for sites exercise will be held specifically for Gypsy and Traveller sites, Commercial and Community-Led Renewable Energy generation sites, as well as Housing and Employment sites within the 12 potential new settlement locations.

A concise digest of what will be in the public consultation should be available at this web site [www.southwarwickshire.org.uk/swlp](http://www.southwarwickshire.org.uk/swlp) or search South Warwickshire Local Plan.

### **What is the view of your District Councillor?**

1. It is essential that we have a Local Plan and get it approved. Stratford District has had a poor experience of a period without a Local Plan in the past and this created a developer led strategy, the effects of which are still being felt. This has been reflected in excess development, often given by appeal, in unsuitable locations with inadequate infrastructure. It also cost £2.3m in planning appeals. The distributed growth option was not desirable as it would have put housing around nearly every village with no significant infrastructure.
2. A plan period to 2050 has been chosen to maximise our chances of creating new communities with the right infrastructure.
3. The previous Government set out that we must make provision for a required number of houses. This had been worked out as 1679 houses per annum using the 'standard method' set out at that time. The previous Government also set out in legislation a 'duty to cooperate' with neighbouring authorities (the West Midlands conurbation) to take their development that they could not accommodate within their boundaries. Our District was faced with having to take thousands of extra houses to meet the needs of Birmingham and Coventry. The present Government has increased the number calculated by the new 'standard method' from 1679 to 2178 houses per year for our Districts.

However, they have indicated that they expect a significant number to be 'internally' provided within Birmingham and Coventry, so we can only hope there may be less 'overspill' to us. The fact is though, we still do not know how many houses we will be required by Government to build each year, which makes planning very difficult. That said, the rate is likely to be something similar to that which we have had over the last few years. This rate contributed to Stratford district having the 12th largest population growth in England.

4. The Council's officers and consultants have come up with four possible sites locally, included within the twelve, for new villages (see Figure 2 overleaf): F1 Land to the West of Ufton, F2 Land South of Deppers Bridge, F3 Land North East of Knightcote, G1 Land to the West of Knightcote.

There are a cluster of possible sites for strategic growth including businesses around the M40 Junction and to the south of Southam. (SG12-14). Sites X2 and SG11 are across the Fosse Way in Warwick District.

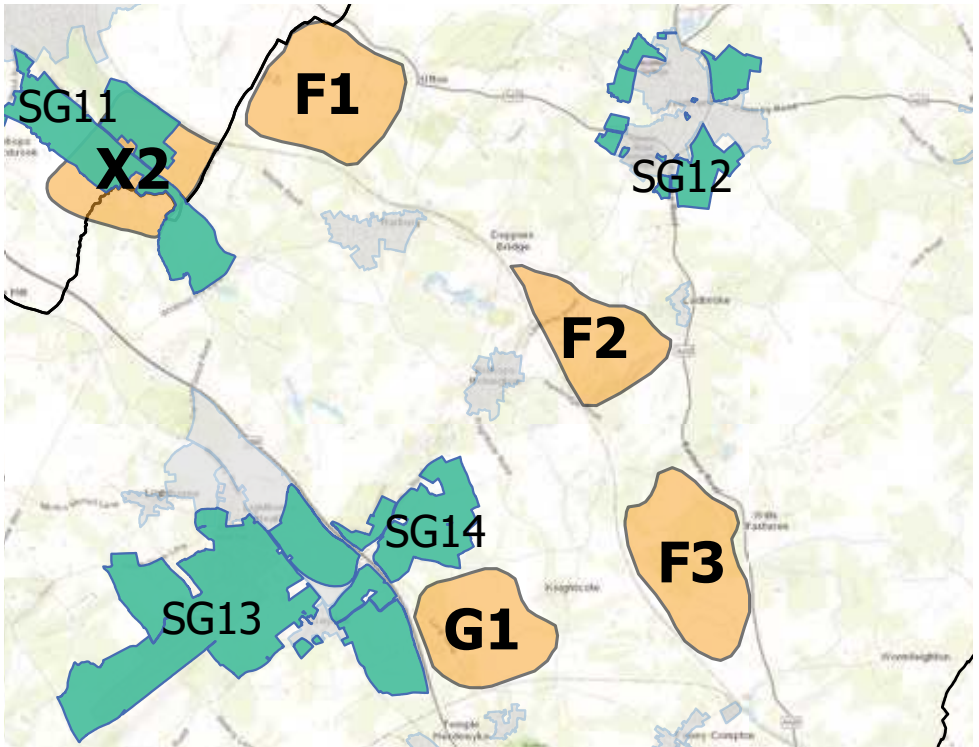


Figure 2

I am surprised to see these sites included because they do not meet the overarching strategy initially set out of an environmentally led approach. All of these sites would be car dependent. The prioritisation of the sites is still being worked on at this stage, and some of the present scoring seems odd. I and many other District Councillors will be resisting these sites as they are unsuitable on several grounds.

You may contact me on: [Sue.ostrander@stratford-dc.gov.uk](mailto:Sue.ostrander@stratford-dc.gov.uk)



## BUMPS & BUNDLES

*Carol Jackson and the Bumps Team*

Happy New Year to all our Bumps and Bundles and their parents, grandparents and childminders.

We will start our meetings again in January on Tuesday 7th January, please look at our Facebook page for more information.

It is a lovely opportunity for the adults to chat to each other whilst their little ones play with the toys and the volunteers make a cup of tea/coffee and offer biscuits.

We look forward to seeing you on Tuesday mornings. There is no need to book, even if you haven't been before, just turn up about 10.30am at the Tom Hauley Room – just follow the path round the church.

Events in today's world trigger a multitude of questions on issues to which our modern society is wanting answers. All Saints Harbury engages in discussion on such issues from both a secular and Christian perspective by meeting on a regular basis in the Shakespeare pub. The next meeting of THE COLLECTIVE will take place on Tuesday 28th January 2025 at 7.30pm. Our next subject for discussion is Comedy - Devilish or Divine?

Future meetings of The Collective will now take place on the fourth Tuesday of every month.

**SENIOR CITIZENS COMMITTEE UPDATE***Mike McBride*

We thought we would have over 100 people at the party, but with changes to circumstances, plans and illness we had 82 on the night. Nonetheless, from the feedback we had everyone enjoyed the evening. We again had a quiz at the end of the party and we would like to thank Paul Winchester for providing it. Thank you, Paul, for all the support you give us.

The raffle helps to finance the party so thanks to those who donated the many and varied prizes to help us and who bought the raffle tickets.

As a small committee, we could not run this event without the help of all the volunteers that set up the hall and serve the meals and clear up afterwards.

In addition to the Harbury Scouts who helped with the setting up, we were also joined in the evening by young people from the Explorers group who helped serve at table. We also had partners and family members and friends of the committee who helped us as well. Thank you one and all and we hope to see you again next year.

The committee would like to wish you all a Happy and Healthy New Year and we look forward to seeing you at our events during the year and for giving us your support. Look out for our schedule of activities in the Harbury and Ladbroke news and occasionally on Facebook and the first will be a coffee morning in the Tom Hauley Room on Saturday 1st February 2025.





## WEDNESDAY WALKERS

---

*Gillian Hare*

I'm writing this after returning from our pre-Christmas walk, from Fenny Compton. We were again really lucky with the weather. Though strong, the wind was not cold, the sun shone and the view over the village quite lovely.

As you can see, we take our coffee break very seriously; in a barn furnished with straw bales and sharing a festive tot! This promises to be another muddy winter but we plan to avoid the worst of it and, anyway, what are boots for? Today's walk finished with a welcome meal at the Merrie Lion, where we were well looked after.

And, if Christmas has left you feeling slightly lethargic, why not join us for a bit of fresh air and exercise in good company. And cheaper than the gym? Details on the diary page or phone Gillian on 614809.





## LITTER PICK IN HARBURY

---

*Ian Reynolds*

Join us next month for the litter pick on Saturday 1st February. Meet at the village hall car park, 10.00 - 11.00am, litter pickers, hoops and bags provided.



## HARBURY LOCAL MARKET

---

*Steve Ekins*

The Harbury Local Market this Month is Saturday 25th January 10.00am to 12.30pm in Harbury Village Hall.

There you will find local traders selling: art, crafts and food.

The Community Group we will be supporting this month is Harbury Library.

Come join us for tea or coffee and a bacon roll.

Harbury Parish Councillors will be there 10.00 – 11.00am with Councillor's Corner to answer any questions you may have.

If you would like to contact us, you can email us [harburylocalmarket@gmail.com](mailto:harburylocalmarket@gmail.com) and also on Facebook @Harbury Local Market, please join our group for regular updates.

Our sponsors



## GALANOS HOUSE

---

*Shelley Fardon*

Please find an updated list below for regular events that are open to everyone in the community for 2025 (no connections to Galanos House are needed to visit us)

### **Monday Club (Warm HUB) - FREE**

When: Every Monday at 2.00 - 3.00pm

What to expect: You will be sure of a warm welcome. Find us on the comfy sofa/chairs in the cafe window area. Join us for a social hour, full of friendly supportive conversations, guest speakers, crafts, trips out, puzzles, games and more.

There will be various refreshments each week and it's completely FREE to join us.

Everyone is welcome to come along – no booking required.

### **Chatty Café Table – FREE**

When: Every Tuesday at 10.00 - 11.30am

What to expect: Our cafe is warm and welcoming every day, but we are privileged to have wonderful volunteers who will be hosting our chatty table on Tuesday mornings. You can find our 'Chatty' tables over on our comfy chairs by the window, marked by the yellow signs. Why not drop-in, treat yourself to a cup of tea with us, stay as long as you like.

Everyone is welcome to come along – no booking required.

## **Dementia Cafe – FREE**

When: Every Friday at 2.30 - 4.00pm

What to expect: A dementia friendly café with various games and activities including reminiscence through music and sport.

Open to people with dementia and their carers.

Everyone is welcome to come along – no booking required.

## **Silver Sunday – FREE**

When: Sunday 6th April, Sunday 6th July, National Silver Sunday 5th October

What to expect: Following in the footsteps of the National Silver Sunday, join us to celebrate older people in our communities.

Come alone or bring a friend and have a dance. Includes free refreshments.

Everyone is welcome to come along – no booking required.

## **Nosh and Natter**

When: 1st and 3rd Wednesday of each month at 12.00 noon - 2.00pm

What to expect: The group is a fantastic way to meet new people and enjoy a delicious homemade two course meal.

We also, enjoy a light-hearted, fun quiz. Free collection and return transport from: Southam Library on 1st Wednesday of each month and St Wulstans Court on 3rd Wednesday of each month.

£10 per person - Booking is essential. Everyone is welcome. Please call 01926 812185 Ext 5365.

## **Armed Forces & Veterans Breakfast Club**

When: 2nd Saturday, last Wednesday and last Saturday of each month from 10.00am - 12 noon.

What to expect: The AFVBC's are more than just a gathering; it's a lifeline for some veterans. When you step into an AFVBC club, you become part of a nationwide tradition of Veterans Breakfast Clubs.

All AFVBC's are a place where veterans and serving personnel come together, forging bonds that last a lifetime, AFVBC's are proud to be a beacon of support and camaraderie.

No subscriptions or fees. Buy your own breakfast, meet old comrades and new friends, and indulge in some good old military banter.

Everyone is welcome to come along – no booking required.

## **Paper Quilling**

When: Monday 6th January 2.00 - 4.00pm, Monday 10th February 2.00 - 4.00pm, Tuesday 25th March 10.00am - 12 noon, Tuesday 29th April 10.00am - 12 noon

Tuesday 10th June 2.00 - 4.00pm, Tuesday 15th July 2.00 - 4.00pm, Tuesday 19th August 10.00am - 12 noon.

What to expect: This is a friendly and relaxed session for like-minded crafty people. Come along and enjoy the company.

Please call to book your place as numbers are limited. There is a small cost of £5 (payable on the day).

You will also need to bring the following equipment which is available from most basic arts and craft suppliers.

Quilling Papers, Quilling Tool, Scissors, Clear PVA Glue Cocktail Sticks, Quilling Board or Polystyrene, Fine Tweezers, Pins

For a full list of events, follow us on Facebook @RBLCommunityHub

The Community Hub and Café is OPEN daily 9.00 – 5.00pm – everyone is welcome.

Contact us: 01926 812185 Ext 5365 or email us [hubmedia@britishlegion.org.uk](mailto:hubmedia@britishlegion.org.uk)



## READERS' LETTERS

### Dear Editors

*We would like to thank everyone who attended the funeral and wake of our mum, Helen Johnson, on the 20th December. She was well loved by all and you gave her a lovely goodbye.*

*We'd also like to say thank you for all your kind messages, cards and donations to the Myton Hospice as well as for your love and support during this difficult time. We'd also like to thank the Harbury GPs, district nurse team and all her friends and neighbours for all the support they've given mum over the many happy years she's had in Harbury.*

*Many thanks,*

***Penny & Sarah (daughters) and Sandy, Sam, Daisy & Will (grandchildren)***

---

### Dear Editors

*Jenny and Andrew (Patrick) would like to sincerely thank everyone who supported us both through 2024. We would like to wish you all a Happy and Peaceful New Year and trust you had a great Christmas.*

## Function Rooms and Premises AVAILABLE FOR HIRE

<b>HARBURY RUGBY CLUB</b> <b>Leah Wallington</b> Tel: 07736 804904 <a href="mailto:hRFC.roomhire@gmail.com">hRFC.roomhire@gmail.com</a>	<b>HARBURY SCOUT HUT</b> <b>Naomi Moir</b> Tel: 611966 <a href="mailto:nandpmoir@googlemail.com">nandpmoir@googlemail.com</a>	<b>HARBURY VILLAGE CLUB</b>  Tel: 241566 - evenings <a href="mailto:harburyvillageclub23@gmail.com">harburyvillageclub23@gmail.com</a>
<b>HARBURY VILLAGE HALL</b> <b>Claire McGurk</b> Tel: 07963 110522 <a href="mailto:harburyvillagehall@googlemail.com">harburyvillagehall@googlemail.com</a>	<b>HARBURY VILLAGE LIBRARY</b> <b>Michael Luntley</b> <a href="mailto:communityhub@harburyvillagelibrary.org.uk">communityhub@harburyvillagelibrary.org.uk</a>	<b>TOM HAULEY ROOM</b>  <b>Moira</b> <a href="mailto:thr@allsaintsharbury.org">thr@allsaintsharbury.org</a>



## Painting & Decorating by Lana

.....

please get in touch to arrange your  
free quotation and to discuss your  
project further

.....

07535 622707  
homeandgarden33@gmail.com




HAWTHORN  
& CO

ESTATE AND LETTING AGENT

### Looking to sell this winter?

- Client-First Approach
- Data-driven Analytics
- Multi-Channel Marketing
- Experienced and dedicated team
- Price Promise Guarantee

*Let us show you how to achieve a premium price*

**CONTACT US NOW**

01926 919553  
enquiries@hawthornandco.co.uk  
www.hawthornandco.co.uk



# Simons Systems

Available for all your computer requirements including:  
PC's & Laptops, New & used systems, Repairs & upgrades  
Virus/Malware Removal, Data back & Windows re-  
installation

Upgrading memory/Hard drives/Rom drives/Graphics, etc  
Internet - modems fitted, wireless.

Any repairs or computer problems. **No call out charge**

T: 01926 316 119  
M: 07751 811 097

E: sales@simons-systems.co.uk  
W: www.simons-systems.co.uk



# Nifty Needle

Curtains and Soft Furnishing

Nifty Needle specialise in creating stylish custom curtains, blinds and soft furnishings, individually designed to create beautiful solutions.

Free measuring service.

At our shop in Kineton we now stock a range of home wares, including lamps, cushions, footstools and other items to accessorise your home.

We're open Tuesday to Friday 9:00am to 5:00pm  
and Saturday 9:00am to 2:00pm.

Nifty Needle Curtain Workroom, 1 Banbury Street, Kineton, Warwickshire, CV35 0JS  
Tel: 01926 641741 E-mail: [info@niftyneedle.co.uk](mailto:info@niftyneedle.co.uk) Website: [www.niftyneedle.co.uk](http://www.niftyneedle.co.uk)

 **alsters kelley**  
SOLICITORS

Are you worried about spiralling  
moving costs?

With Alsters Kelley fixed rate conveyancing, there are no unexpected costs. Plus there is an experienced team to guide you through the stages of your move!

- Instant no obligation quote via our website
- No additional administration charges
- Personal service with allocated contacts

kind. helpful. excellent

Terena Barnacle, Associate, Chartered Legal Executive, Residential Property

01926 359357 or email [terena.barnacle@alsterskelley.com](mailto:terena.barnacle@alsterskelley.com)

4 High Street, Southam, CV47 0HA

[www.alsterskelley.com](http://www.alsterskelley.com)



  
**LOVE TO DANCE?**  
 SOUTHAM CLASSES

**FREE TRIAL CLASS**

Ballet	Commercial
Tap	Contemporary
Modern	Mini Movers
Gymnastics	Funky Dance
Musical Theatre	Cheerleading
Street Dance	Adult Classes

★ confidence   ★ fun   ★ friendships

Professional Purpose Built Dance Studios in  
**Southam**

[www.loveballet.co.uk](http://www.loveballet.co.uk)  
 ☎ 01921 853773



SMALL GARDEN MACHINERY


Service & Repairs

For service and repairs to your push mowers, strimmers, hedge cutters and many more small garden machinery items please call Aid on

07447 967861

**CHRIS HILL M.C.I.A.T**  
 LOCAL DESIGN PRACTICE TO PREPARE PLANS FOR YOUR IDEAL HOME

EVER THOUGHT OF EXTENDING YOUR HOME?  
 DOES IT HAVE THE POTENTIAL TO CHANGE?  
 DO YOU NEED MORE SPACE?



**CONTACT**  
 CALL: 01926 613760 (EVENINGS)  
 07772119266 (MOBILE)  
 EMAIL: CHRISHILL100@BTINTERNET.COM

A Member of the Alliance of Private Sector Practitioners

Jackie Biddle

Healthy Feet are Happy Feet

Your Health Practitioner



Dip. CHSP NHS Award  
CRB Checked

- Nail Trimming
- Corn Removal
- Verruca Treatment
- Ingrown Toenails
- Calluses Reduced
- Footcare for Diabetes

Home Visits Telephone

T: 01926 612603  
 M: 07872 907429

# WIPE-OUT WASPS

Family-run business since 2005

Fast response  
Competitive rates  
Full pest control service

For a local friendly service call

Alan or Dawn Whyte

**07867 768533**  
**01926 889711**

enquire@wipeoutpestcontrol.co.uk  
www.wipeoutpestcontrol.co.uk



## OPEN TO THE PUBLIC

Enjoy hot and cold drinks, sandwiches, salads, and cakes from our converted shipping container at Squab Hall Farm.

Relax in our outdoor seating area surrounded by plants from the original farmhouse garden.

Local produce and crafts available for purchase.

Opening Times  
Monday to Friday  
9 am to 4 pm



# fitrite

wardrobes of leamington spa  
est 1983

**1983-2023**  
40 years fitting  
your bespoke  
bedroom and  
office furniture

[www.fitrite.co.uk](http://www.fitrite.co.uk)



Call us today 01926 312654 and book your  
free no obligation design appointment.





**Childcare from 3 months to 5 years of age**  
at Banana Moon Day Nursery Harbury

Providing a safe, caring environment for children from 3 months to 5 years of age.

- Open 7.30am - 6.30pm
- All major childcare vouchers accepted
- Full-day and half-day sessions available
- Highly experienced, friendly staff
- Tiddling discount
- Outdoor learning environment.

Outdoor learning environment

Home-cooked food

To find out more or to book a visit, call **01926 612374** or email [info@bananamoon-harbury.co.uk](mailto:info@bananamoon-harbury.co.uk)

  Banana Moon Day Nursery Harbury  
100 Lane, Harbury, Warwickshire CV35 9PH  
Call us on 01926 612374  
or visit [bananamoon-harbury.co.uk](http://bananamoon-harbury.co.uk)

\*Subject to terms and conditions. Placement finding available.

**COME AND DISCOVER WALX CIRCUITS**

Harbury Rugby Club Every Monday Evening  
Time 1815 - 1900

- Great way to improve overall fitness
- Come along and have some fun
- ALL WELCOME
- Call Peter or Emma
- 07801 659 002
- 07759 120 811





**HOUSE PARTY FLOWERS**

FLOWERS FOR ALL EVENTS  
Weddings, Parties, Special Events,  
Bespoke Workshops & Funerals  
Studio located in Harbury  
Contact: Katy 07470 180 220  
[www.housepartyflowers.co.uk](http://www.housepartyflowers.co.uk)  
[email:info@housepartyflowers.co.uk](mailto:email:info@housepartyflowers.co.uk)

FRIENDLY · RELIABLE · PROFESSIONAL

## LOCAL ELECTRICIAN



### Fully Insured Free Estimates

- Fault finding
- Outdoor lights & sockets
- Fuse board replacements
- Power to outbuildings: sheds, workshops & home offices
- Extra sockets & switches

“ Steve's work is excellent, I would definitely recommend him to anyone ”

“ Very polite & efficient. The job was done on time and to a high standard ”



**ROOLIVE**

Call Steve on: 07792 971018

Email: [steve@roolive.co.uk](mailto:steve@roolive.co.uk)

[www.roolive.co.uk](http://www.roolive.co.uk)

## Ed's Music Tuition

- Do you want to learn keyboards, guitar or ukulele with a qualified teacher with a passion for music?
- Lessons available for all ages.
- Learning an instrument is rewarding and great fun, and I can help you on your way.
- Fully DBS checked.
- Competitive rates and flexible timetable with lessons tailored to your own individual learning style and needs.
- Tuition in playing, reading music, performance and theory.
- Give me a call to discuss your musical future!



Ed Hudson, Harbury.

Mob: 07801 430029

email: [eddhudson@gmc.com](mailto:eddhudson@gmc.com)



## Inside Homes

*your small and mighty agent*



X

## Inside Interiors

*we don't just sell homes, we make them*



### Inside Homes

At Inside Homes, we deliver our comprehensive property sales and marketing services with total professionalism and integrity - because we know just what it's like to walk in your shoes.

[www.insidehomeslimited.co.uk](http://www.insidehomeslimited.co.uk)

Discover your dream home  
76 Coventry Street, Southam, CV47 0EA



### Inside Interiors

At Inside Interiors, we offer a range of furnishings for your home, catering to all your styling needs, whether you're moving, revamping or searching for the perfect gift.

[www.insideinteriors.co.uk](http://www.insideinteriors.co.uk)

In store and online shopping available  
76 Coventry Street, Southam, CV47 0EA



*you have to be seen to be sold*



[www.stratfordlandscapes.com](http://www.stratfordlandscapes.com)

*(We live in Harbury)*

Small garden experts | Garden Design | Porcelain & other types of Paving  
Real & artificial lawns | Stunning plant collections | Decorative Pergolas & Fences  
Privacy Solutions | Low Maintenance Gardens

*"Let Dave & the boys work their magic & you won't be disappointed"*

**Contact David Lewis on 07990975158 or visit our website**



*Emily Jayne's*

*Hair & Beauty Unisex Salon*

All types of Hairdressing Services

Brazilian blow dry,

Luxury facials & pedicures

Hot stone massages

All types of waxing

Individual lash extensions

Acrylic nail extensions

Sunbed



*Bella U Aesthetics are  
holding clinics in the salon  
every Wednesday evening*

Opening hours:

Tuesday - Thursday 9am til 7pm

Friday 9 am til 6 pm

Saturday 8.30 am til 3 pm

Poplar Road, Bishops Itchington CV47 2RQ - Tel: 01926 611944

~~ [www.vhs2dvd.info](http://www.vhs2dvd.info) ~~

Have your old VHS or Camcorder videos transferred to  
DVD or converted to digital files  
(MP4/MOV/AVI/WAV)

*Makes a great Christmas  
or birthday gift!*

*Locally based - for details visit website  
Or call 07733 368245 after 6pm*



**SUNILMEHRA**  
PAINTING & DECORATING

PAINTING IS AN ART. YOUR SPACE IS OUR CANVAS.

**T: 01926 613158 M: 07976 241949 E: [s.mehra@btinternet.com](mailto:s.mehra@btinternet.com)**



**Your Local Professional Chimney  
Sweeping Service**

Full Range of Chimney Sweeping Services  
Open Fires, Stoves, Rayburn and Aga's Cowl  
& Bird Guards Fitted. Bird Nest Removal

Please contact Martin Jakeman  
07816 337962

Email: [theshiresweep@gmail.com](mailto:theshiresweep@gmail.com)  
[www.theshiresweep.co.uk](http://www.theshiresweep.co.uk)



**TOM RODGERS  
Tree Services**

- Professional Tree Care
- Tree Dismantling
- Stump Grinding
- Hedge Trimming

Free No  
Obligation  
Quote

Established 2003  
Member Arboricultural Association  
Fully Qualified & Insured



Mobile - 07958 794180 Office - 01926 710383 Email - [tom@tomrodders.co.uk](mailto:tom@tomrodders.co.uk)  
[www.tomrodders.co.uk](http://www.tomrodders.co.uk)

# DOOR & KITCHEN STORE

Making your space a better place

Quality Fitted Kitchens – Internal & External Doors - Supply & Fit.

T. 01926 888806 or E. doorandkitchenstore@gmail.com

Alveston Place Oxford Street Leamington Spa CV32 4SN

More! Service - Expertise - Quality - Range - Value

## Southam Carpets

Carpets, Vinyl flooring, Karndean, Blinds  
and Curtains. Free quotes and advice.  
Professional installation.



**01926 814944**

www.southamcarpets.co.uk  
39 Coventry St. SOUTHAM

*Quality, Value & Service since 1979.*

# THE SALON

LADIES & GENTS HAIRDRESSERS

TO BOOK AN APPOINTMENT CALL 612400 & 07778 454528

CHAPEL STREET HARBURY



10% DISCOUNT  
WITH THIS ADVERT

DOMESTIC AND COMMERCIAL HIGH QUALITY  
CLEANING FOR CLIENTS WHO DEMAND THE BEST

BEFORE

AFTER



Tel: 01926 889 691

Email [info@steamingssam.co.uk](mailto:info@steamingssam.co.uk)

[www.steamingsam.co.uk](http://www.steamingsam.co.uk)

### WHAT WE DO:

- deep 'van mounted' carpet cleaning
- stain removal
- fabric protection
- specialist oriental rug cleaning
- hard floor, tile and grout cleaning
- upholstery cleaning
- leather restoration
- end of tenancy cleaning

...AND MORE!

STEAMING SAM specialise in professional cleaning, work is carried out by fully trained, trustworthy technicians and we are insured for your peace of mind.

Call us or check out our website for further information