

Harbury & Ladbroke News



DECEMBER 2024



Chauffeur Service

Reliable
Comfortable
Discrete

Events
Meetings
Days Out
Airport / Seaport



Ensure that you reach your destination on time and relaxed.

07817897813

Fully qualified and licenced chauffeur

BCD



B CHAUFFEUR DRIVEN

Harbury

bchauffeurdriven.net

warwick@bchauffeurdriven.net

Refuse Collection Rota

Week Commencing Monday	Thursday Collection - Harbury	Wednesday & Friday Collections - Ladbroke Friday Collection - Deppers Bridge and Bull Ring Farm Rd, Harbury
2 December	F - W	F - R - W - G
9 December	F - R - G	F
16 December	F	F - R - G
23 December	<u>Saturday 28 Dec</u> F - R - W not garden	<u>Friday 27 Dec</u> F - W <u>Monday 30 Dec</u> F - W
30 December	<u>Saturday 4 Jan</u> F	<u>Friday 3 Jan</u> F - R not garden <u>Monday 6 Jan</u> F - R not garden
6 January	<u>Friday 10 Jan</u> F - R - G	<u>Thursday 9 Jan</u> F <u>Saturday 11 Jan</u> F

F = Food caddy - **R** = Recycling (blue bin) **W** = Waste (black bin) **G** = Garden (green bin)
Wednesday Collection - Parts of Ladbroke - Thursday Collection - Harbury
Friday Collection - Deppers Bridge and Parts of Ladbroke

This magazine is available by subscription and delivered within Harbury, Deppers Bridge and Ladbroke. Telephone 07900 852236 for details.

HARBURY & LADBROKE News

Published monthly to reflect all aspects of local life

December 2024

No. 609

EDITORIAL	4
HARBURY DIARY	5
FROM THE RECTOR AND CHURCH NEWS	8
LADBROKE NEWS	13
LADBROKE PARISH COUNCIL	16
CLUBS & SOCIETIES	17
SPORTING ACTIVITIES	40
EARLY YEARS & SCHOOL	47
LIBRARY & CLUB	49
GARDENING & NATURE	49
GENERAL SECTION	52

Editorial Office

31 Binswood End

☎ 612155

✉ articles@hlnews.co.uk

Article drop off point:
Harbury Pharmacy,
High Street

Advertising Office

36 Manor Orchard

☎ 612687

✉ advertising@hlnews.co.uk

Distribution Manager

49 Mill Street

☎ 07900 852236

✉ distribution@hlnews.co.uk

Inserts by prior arrangement with
the Distribution Manager

Editorial Team

Andy Goss – Paulette Kavanagh – Peter McDonald – Sue and David Turner
Daralyn Warren – Jackie West

*The views of contributors are not necessarily those of the Editorial Team.
The Editors reserve the right to amend articles as they see fit.*

Cover Photo: Tractor Run 2023 by Sue Dronfield



EDITORIAL

A round up of local news



The Remembrance Service in November was well supported by our uniformed groups as well as villagers who gathered at the War Memorial. We would like to thank Adrian Giblin for sending in his photos taken during the laying of the wreaths.

Well done too to the Guides & Scouts Support (GASS) for hosting another fabulous bonfire and fireworks evening; the event was enjoyed by all. GASS will also be organising their usual Christmas postal service for sending your Harbury village Christmas cards. Drop your cards in at the village library with a generous donation and they will do the rest! Last posting day Friday 20th – see article.

Both churches will be holding their usual Christmas services during the festive period. Additionally, Harbury Church has a concert of Christmas Music with the Warwickshire Singers on 9th December. Ladbroke Church will be hosting Spa Chorale presenting 'Can you hear the Christmas Bells' on 13th December with mulled wine and mince pies for all to enjoy.

If you missed last year's Tractor Run, the organisers are holding the event again on Friday 20th December. So if you would like to see a convoy of Tractors all decked out in fairy lights and tinsel, in aid of Galanos House, Southam, look out for them coming through – see articles on pages 23 and 58 for more details.

Please note there are changes affecting both villages to the recycling and refuse collection days in the week following Christmas. Details of the changes can be found on the inside cover.

Due to the Christmas and New Year holidays, the articles and advertising deadline for the January 2024 edition of the magazine will be on Thursday 19th December. Copies will not be available from the printers until Wednesday 8th January and these will be distributed as soon as possible after this date.

Congratulations to Kerrie Reeves and Michael Arnold on their recent wedding. We extend our condolences to the families of Celia Barrett, Pat Kennedy, Barbara Jean Murphy, Jill Norgate and Thomas Barron Smith.

Finally, we wish all our readers a Merry Christmas and a Happy New Year.



HARBURY DIARY

For local events

DECEMBER

Sun 1 ADVENT SUNDAY

Holy Communion, 9.00am, Church
Little Saints, 10.30am, Church
Zumba, 9.00am - 10.00am, Village Hall

Mon 2 Harbury Toddler Group, 10.00 - 11.30am, Scout Hut
Badminton, 10.00am - 12 noon, Village Hall
Martial Arts, Juniors 5.45pm, Seniors 6.45pm, Village Hall

Tue 3 Chair-based Activity Class, 10.00 - 11.00am, Village Hall
Bumps & Bundles, 10.30am - 12 noon, Tom Hauley Room
Harbury Heritage Centre open, 7.00 - 9.00pm, Harbury School (Park Lane entrance)

Wed 4 Wednesday Walk, meet 9.35am, Village Hall car park - Dunchurch-Draycote (5 miles)
Mothers' Union, Service 2.00pm, meeting starts 2.30pm - making table arrangements, Tom Hauley Room
Spellbound Dance Classes, 5.00 - 5.30 & 5.30 - 6.15pm, Village Hall
Hereburgh Morris Practice session, 8.00 - 10.00pm, School Hall

Thu 5 Table Tennis, 9.30 - 10.30am, Village Hall, Tel: 01926 612951
Holy Communion, 10.00am, Tom Hauley Room
Folk Club, 8.00pm, Village Club

Fri 6 Meeting Point, 12.30pm, The Crown Inn

Sat 7 Litter Pick, 10.00 - 11.00am, meet Village Hall
Coffee Morning, 10.00am - 12 noon, Tom Hauley Room in aid of Crime Stoppers Charity
Christmas Fayre, 2.00 - 4.00pm, Village Hall

Sun 8 ADVENT 2

Sung Holy Communion, 10.30am, Church
A Messy and Muddy Christmas, 3.00 - 5.00pm, Church
Zumba, 9.00am - 10.00am, Village Hall

Mon 9 Harbury Toddler Group, 10.00 - 11.30am, Scout Hut
Badminton, 10.00am - 12 noon, Village Hall
Martial Arts, Juniors 5.45pm, Seniors 6.45pm, Village Hall
Gloria - a concert of Christmas Music with the Warwickshire Singers, 7.45pm, Church

Tue 10 Chair-based Activity Class, 10.00 - 11.00am, Village Hall
Bumps & Bundles, 10.30am - 12 noon, Tom Hauley Room

Wed 11 Wednesday Walk, meet 9.35am, Village Hall car park - Lower Boddington (4.2 miles)
Quiet Space, 10.00am, Tom Hauley Room
Knitwits and Pleasant Pastimes, 2.00 - 4.00pm, Village Library
Spellbound Dance Classes, 5.00 - 5.30 & 5.30 - 6.15pm, Village Hall
Hereburgh Morris Practice session, 8.00 - 10.00pm, School Hall

- Thu 12 Table Tennis, 9.30 - 10.30am, Village Hall, Tel: 01926 612951
Holy Communion, 10.00am, Tom Hauley Room
Harbury WI, Nathalie Dalton-King - Gruel in a pot C15th Dining and Fine Fare, 7.30 for 7.45pm, Tom Hauley Room
- Fri 13 Ben & Soph's Jazz Night, doors 6.30pm / show 7.00pm, tickets via www.ticketsource.co.uk/bsjazz, Village Hall
- Sat 14 Coffee Morning, 10.00am - 12 noon, Tom Hauley Room in aid of Southam Bowls Club Repair Café, 2.00 - 4.00pm, Village Library
Senior Citizens Christmas Party, doors open 5.30 for 6.00pm start, Village Hall
- Sun 15 ADVENT 3**
Holy Communion, 8.00am, Church
Christingle, 4.00pm, Church
Zumba, 9.00am - 10.00am, Village Hall
- Mon 16 Harbury Toddler Group, 10.00 - 11.30am, Scout Hut
Badminton, 10.00am - 12 noon, Village Hall
Southam Lions Santa visits Harbury, 5.30pm start - Hereburgh Way, Manor Road, South Parade, Frances Road
Martial Arts, Juniors 5.45pm, Seniors 6.45pm, Village Hall
Harbury Theatre Group's Annual Christmas Carols Sing Along, 7.00pm, Shakespeare Inn
- Tue 17 Chair-based Activity Class, 10.00 - 11.00am, Village Hall
Bumps & Bundles Christmas Party, 10.30am - 12 noon, Tom Hauley Room
Southam Lions Santa visits Harbury, 5.30pm start - Brooks Drive, Manor Orchard, Mill Street, Dickens Road
The Collective - 'Christmas - is it all it's cracked up to be?' 7.30pm, Shakespeare Inn
- Wed 18 Wednesday Walk, meet 9.35am, Village Hall car park - Fenny Compton with optional pre-booked meal (3.5 miles, 1 hill)
Connections (Dementia Friendly) Café, 2.00 - 4.00pm, Tom Hauley Room
Spellbound Dance Classes, 5.00 - 5.30 & 5.30 - 6.15pm, Village Hall
Hereburgh Morris Practice session, 8.00 - 10.00pm, School Hall
- Thu 19 Holy Communion, 10.00am, Tom Hauley Room
ARTICLES FOR NEXT ISSUE TO: HARBURY PHARMACY, HIGH ST OR EMAIL TO ARTICLES@HLNEWS.CO.UK BY 5.30PM
ADVERTS FOR THE NEXT ISSUE TO 36 MANOR ORCHARD, HARBURY OR EMAIL ADVERTISING@HLNEWS.CO.UK
- Fri 20 Last day for posting Christmas cards in GASS post box in Library
Tractor Run 2024 coming through Harbury at approximately 8.20pm - (see article)
- Sat 21 Coffee Morning, 10.00am - 12 noon, Tom Hauley Room in aid of PCC
- Sun 22 ADVENT 4**
Sung Holy Communion, 10.30am, Church
Zumba, 9.00am - 10.00am, Village Hall
Harbury Heritage Centre open - Mulled Wine and Mince Pies, 2.00 - 4.00pm, Harbury School (Park Lane entrance)

- Tue 24 CHRISTMAS EVE
 Dress up Nativity, 3.00pm, Church
 Candelit Village Carol Service, 6.00pm, Church
 Candelit Midnight Mass, 11.15pm, Church
- Wed 25 CHRISTMAS DAY
 Family Christmas Communion, 10.30am, Church
- Sat 28 No Coffee Morning in Tom Hauley Room
- Sun 29 SUNDAY AFTER CHRISTMAS**
 Sung Holy Communion, 10.30am, Church
 Zumba, 9.00am - 10.00am, Village Hall
 Warwickshire Fitness, Gong & Sound Bath, 6.30 - 7.30pm, Village Hall
- Tue 31 NEW YEAR'S EVE

JANUARY 2025

- Wed 1 No Wednesday Walk
 Hereburgh Morris' Annual Hangover Tour, starting 12.00 noon at the Crown Inn
 Mothers' Union including Party, Service 2.00pm, meeting starts 2.30pm,
 Tom Hauley Room
- Thu 2 Table Tennis, 9.30 - 10.30am, Village Hall, Tel: 01926 612951
 Folk Club, 8.00pm, Village Club
- Fri 3 Meeting Point, 12.30pm, The Crown Inn
- Sat 4 Coffee Morning, 10.00am - 12 noon, Tom Hauley Room in aid of Southam Guide
 Dogs
- Sun 5 2ND SUNDAY AFTER CHRISTMAS**
 Said Holy Communion, 9.00am, Church
- Mon 6 Badminton, 10.00am - 12 noon, Village Hall
 Martial Arts, Juniors 5.45pm, Seniors 6.45pm, Village Hall
- Tue 7 Chair-based Activity Class, 10.00 - 11.00am, Village Hall
 Bumps & Bundles, 10.30am - 12 noon, Tom Hauley Room
- Wed 8 Wednesday Walk, meet 9.35am, Village Hall car park - Kineton (3 miles)
 Quiet Space, 10.00am, Tom Hauley Room
 Knitwits and Pleasant Pastimes, 2.00 - 4.00pm, Village Library
 Hereburgh Morris Practice session, 8.00 - 10.00pm, School Hall
- Thu 9 Table Tennis, 9.30 - 10.30am, Village Hall, Tel: 01926 612951
 Holy Communion, 10.00am, Tom Hauley Room
- Sat 11 Coffee Morning, 10.00am - 12 noon, Tom Hauley Room in aid of Harbury Heritage
 Centre

The Refuse Rota can be found on the inside of the front cover.

Dates for inclusion in the Harbury Diary please to:
 The Editorial Office, 31 Binswood End, Tel: 612155 or email articles@hnews.co.uk



**All Saints
HARBURY**

FROM THE RECTOR

Rev. Andy Batchelor

The Rectory, Vicarage Lane, Harbury ☎ 01926 714295 ✉ rev.andyb@gmail.com

As I write this piece, the weather forecasts are saying we might see some snow falling next week. Of course this probably won't happen here, but you never know. As always the shops and some particularly keen residents have already put up decorations and lights, and we have started to hear the familiar cheesy Christmas hits. Those glam bands of the 70's are still drawing in the royalties and probably will for decades to come! In more recent years we have come to expect the usual arguments over the TV adverts for large stores, as well as probably more organisations dropping the word 'Christmas' in favour of something like 'holiday season'. It's fascinating isn't it how Christmas can stir up so many emotions and controversies.

I wonder what you are anticipating this Christmas? I'm sure many are looking forward to warm family reunions, joyful celebrations and some much-needed down time. But also there will be those whose hearts are sinking because this Christmas a loved one will no longer be with them, or the financial demands of the season will bring more debt which they can ill-afford.

This year has been a challenging one for many reasons, the dreadful and ongoing loss of life in Ukraine and Gaza, political turmoil, economic downturns and just a continual sense that life is so uncertain.

But setting aside all the peripheral stuff, the heart of Christmas is really very simple. We talk of light dispelling darkness, of a new hope being born in the shape of a baby whose destiny is to change the world forever.

However we approach Christmas this year, I just want to say to you all, whatever you might be facing, whatever you anticipate this Christmas, this one thing remains unshaken, and that is God's inexhaustible commitment to, and love for, each one of us, expressed in the birth of his son Jesus. His promise is to walk with us wherever we may find ourselves, whether we are aware of him or not.

Our churches would love to see you at any of the services or events we are holding this Christmas, and may God bless you and those you hold dear this Christmas and always.



FROM THE CHURCHWARDENS

Liz & Andy

The church Christmas Fair is on 7th December from 2pm to 4pm at the Village Hall. We look forward to seeing you and offerings will include visits to Father Christmas, games, tombolas, mulled wine and opportunities to buy Christmas presents of honey, jewellery, wreaths, crafts, chocolate hampers and much more. And, of course, a rest in the cafe.

Funds raised at the Fair will be put towards our appeal to improve the Audio-Visual system in both the church and Tom Hauley Room and some urgent repairs required to the church building. We are seeking to raise around £75k, of which we expect to be able to seek grants for 50%.

On the evening of Monday 9th December, we are looking forward to welcoming the Warwickshire singers for a festive concert. Mulled wine will be on offer during the interval!

REMEMBRANCE - 10TH NOVEMBER 2024

PHOTOS BY ADRIAN GIBLIN



We're really looking forward to combining Messy Church and Muddy church on Sunday 8th December at 3.00pm for a Messy, Muddy Christmas. Lots of fun activities on offer for primary age children, some of which will be outside where we will have our Muddy church camp fire going so do wrap up warm. As ever a meal will be provided for the children.

On Sunday 15th December there will be no All-Age service at 10.30 but instead we will once again be hosting a Christingle service at 4pm which will include a performance from the Open the Book team, with which children that go to Harbury School will be familiar.

As is traditional, the church will host the coffee morning in the Tom Hauley room on Saturday 21st December with a raffle in aid of the Children's Society.

On Christmas Eve we will again have a nativity service at 3pm which will include the opportunity for children (and adults if they wish) to dress up and sing some carols. Last year this was a really fun service, with lots of Marys, Josephs, shepherds and various animals! Children (and adults!) can come dressed up, or there will be various costumes available in church.

Following this at 6pm will be the candlelit Village Carol service and at 11.15pm the candlelit Midnight Mass. On Christmas morning there will be a family communion service at 10.30am. Do bring any presents Santa has brought – everyone loves a show and tell in church on Christmas morning!

If you have any questions, we can be emailed on warden@harburychurch.org or phone us - Liz McBride 01926 612421 or Andy Dean 07753 497967.

From the Registers

Funerals

7th November Thomas Barron Smith (85 years)
11th November Barbara Jean Murphy (94 years)



MOTHERS' UNION

Gillian Hare

At our (brief) AGM, Chris reminded us of the interesting talks and happy activities of the last year. We are delighted that she is willing to continue to lead our branch, as well as becoming a diocesan trustee next January. This was followed by a most informative talk about Myton Hospice. The speaker is a palliative nurse there; her warmth and enthusiasm embodied their mission statement: "Full of life and love". She explained how much more than end of life care is available, with help in lots of practical ways from the early stages of a diagnosis. As the only in-patient facility in Coventry and Warwickshire, providing for 2,000 patients a year and only receiving 20% funding from NHS, the pressures are huge. She emphasised how invaluable the many volunteers are to the work, which makes such a wonderful difference both to patients and their families.

Next year's subscription of £37 is due; this all goes to the wider work of MU. To top up our branch funds, and enable us to continue to give Bibles to couples marrying in Harbury and Ladbroke, as well as hardship gifts for school, we plan to hold a Bread and Broth lunch on Friday 7th February.

RECTORY FARM COTTAGE, HARBURY ROAD, LADBROKE, CV47 2DF

SEAL

ROOFING SOLUTIONS

Our services include:

- Pitched roof repairs & replacements
- Traditional & modern finishes
- Flat roof replacements
- Fascia & guttering replacements

Contact Terry
07506535419

sealroofing@outlook.com

Checkatrade.com
Where reputation matters

Auction Sales & Valuations

Valuation, collection and auction service of individual items through to complete property and commercial clearances.

Call for a free no obligation quote or email info@leauktion.co.uk

SALE ENTRIES NOW INVITED

www.leauktion.co.uk



LOCKE & ENGLAND
AUCTIONEERS & VALUERS

**01926
889100**

18 Guy Street,
Leamington Spa,
CV32 4RT



**HOMEBUYER SURVEYS,
BUILDING SURVEYS & VALUATIONS**

If you need **honest and pragmatic advice**, but also appreciate a friendly face and heaps of enthusiasm, then **Karena** is the lady to go to for **all your surveying solutions**.

- RICS Chartered Surveyor
- RICS Registered Valuer
- RICS Level 2 & 3 Property Surveys
- Short Property Reports
- Party Wall Awards
- Valuations for Help to Buy, Shared Ownership & Probate
- Over 33 years' experience



Please contact **Karena** for more information.

01926 612121 / 07752 134874

admin@greenchameleon.net
www.greenchameleon.net



Frank
Mann
Farmers



- Commercial & domestic mowing
- Fencing ■ Landscaping & more

"Attention to detail"

Michael Mann or Emma Mann

Tel: **07759863269 / 07931491417**

michael.mann1@btinternet.com

www.frankmannfarmers.co.uk

Chris' commissioning will be at the Cathedral on Saturday 11th January at 11am; she is happy to give a lift to anyone who would like to support her.

At our next meeting, on 4th December, we shall be making table arrangements to sell at the Christmas fair on the 7th. Please bring cutters, and any baskets you might have.

And on 1st January, we celebrate another year with our party. Do come, bring a friend and a bran tub gift up to £2, for an afternoon of fun, friendship and food!

Your committee wish you all the blessings of this season of our Saviour's birth.



LADBROKE NEWS & DIARY

DECEMBER

Sun 1 ADVENT 1

Family Service, 10.30am followed by refreshments

Tue 3 Photography Club, 7.30pm, Village Hall

Wed 4 WI Christmas Meal, 1.00pm, Draycote

Thu 5 Ladbroke Village Hall and Millennium Green AGMs, 7.00pm, Village Hall

Sun 8 ADVENT 2

Holy Communion, 9.00am

Tue 10 Table Tennis, 7.30pm, Village Hall

Wed 11 Heritage & Friendship Group Meal, 12.30pm, The Old School

Fri 13 Come and Hear the Christmas Bells, Spa Chorale concert with audience participation, 7.30pm, Ladbroke Church

Sun 15 ADVENT 3

Holy Communion (BCP), 9.00am

Tue 17 Table Tennis, 7.30pm, Village Hall

Thu 19 ARTICLES FOR NEXT ISSUE TO: HARBURY PHARMACY, HIGH ST OR EMAIL TO ARTICLES@HLNEWS.CO.UK BY 5.30PM

ADVERTS FOR THE NEXT ISSUE TO 36 MANOR ORCHARD, HARBURY OR EMAIL ADVERTISING@HLNEWS.CO.UK

Fri 20 Tractor Run, expected at Ladbroke 9pm-ish

Sun 22 ADVENT 4

No morning service

Christmas Evensong with carols, 6.00pm

Tue 24 CHRISTMAS EVE

Crib Service, 3.00pm

Wed 25 CHRISTMAS DAY

Christmas Family Communion, 9.00am

Sun 29 SUNDAY AFTER CHRISTMAS

Holy Communion (said service), 9.00am

JANUARY 2025

Thu 2 WI games night, 7.30pm, Southam Bowls Club

Sun 5 EPIPHANY SUNDAY

Family Service, 10.30am, followed by refreshments

Tue 7 Table Tennis, 7.30pm, Village Hall

Wed 8 Heritage and Friendship Group, 10.30am - noon, The Old School
Parish Council, 7.45pm, Village Hall

January Edition - Harbury Ladbroke News

Adverts to: 36 Manor Orchard, Harbury or e-mail to
advertising@hlnews.co.uk by Thursday 19th December

Articles to:
Harbury Pharmacy, High Street or e-mail to
articles@hlnews.co.uk by 5.30pm, Thursday 19th December



LADBROKE CHURCH NEWS

Peter Rigby
www.ladbrokechurch.org.uk

We again held a "Night of our Light" in the churchyard on All Saints Day, with the churchyard beautifully candlelit and visitors also able to reflect quietly in the church. The churchwardens read out the names of those who we were remembering and Rev Andy led us in some short prayers. Thank you to all those who helped with the preparations for the event. The theme of remembrance was continued the following Sunday when we paid our respects to those who fell serving our country and wreaths were laid at the memorial by representatives of our local community at the Village Remembrance Service.



A huge thank you to everyone who helped at or supported our coffee morning in the Tom Hauley Room in mid-November. Thanks to you there was a real buzz of happy chatter as people drank their cuppa, browsed the stalls for bargains and bought cakes and raffle tickets. I'm pleased to report that the small herd of reindeer which came along were happy to disperse, bringing Christmas cheer to various homes in the coming weeks.

By the time this edition is distributed we will already be in Advent, with Christmas fast approaching. This year will be tinged with sadness for many and we shall particularly be missing our Choir Master, Bill Bosworth. We shall not be able to hold our traditional choir led Carol Service this year but we are very pleased to be able to host a concert by the Spa Chorale "Can You Hear the Christmas Bells" on Friday 13th December at 7.30pm. Mulled wine and mince pies will be on offer. Admission free but donations will be accepted on the night, to be shared between the Chorale and the Church.



Night of our Light



Remembrance Service



Coffee Morning visitor

For those of you wishing to join in with more Carol Singing, our service on Sunday 22nd December will be a special Christmas Evensong, commencing at 6.00pm. Please note that this will be in place of our normal 9.00am service.

On Christmas Eve we will be holding the Crib Service at 3.00pm and our service on Christmas Day will be at 9.00am this year.

A warm invitation to all to any and all of the above, and may we wish you a very happy and peaceful Christmas.

From the Registers

Wedding

2nd November Kerrie Reeves and Michael Arnold

Funeral

21st November Pat Kennedy

Future Services and Events

Sunday 1st December	10.30am	Family Service
Sunday 8th Dec	9.00am	Holy Communion
Friday 13th Dec	7.30pm	Spa Chorale – “Can you hear the Christmas bells?”
Sunday 15th Dec	9.00am	Holy Communion (BCP)
Sunday 22nd Dec	9.00am	No morning service
	6.00pm	Christmas Evensong (with carols)
Tuesday 24th Dec	3.00pm	Crib Service
Christmas Day	9.00am	Holy Communion
Sunday 29th Dec	9.00am	Holy Communion (said)
Sunday 5th January	10.30am	Family Service



www.ladbrokechurch.org.uk ladbrokechurch@gmail.com



LADBROKE PARISH COUNCIL

Jackie West – H&L News Correspondent

Official minutes can be viewed on the noticeboard by The Bell Inn and the parish council's website - www.ladbroke-pc.gov.uk

On 14th November, as well as all our councillors and our representatives on SDC and WCC, there were a good number of villagers and several senior people from Stratford District Council present for the main topic of the evening, the development in Windmill Lane. The current position was summarised, concerns raised and questions asked. After this the majority of people left and it was on to the usual topics.

SDC

There is now a Customer Access Terminal at Southam Library, available 9.30am-4pm on Mondays, Tuesdays, Thursdays and Fridays. This means without travelling over to Stratford, people can speak "face-to-face", via a webcam and screen, to a customer services advisor about council tax, benefits and housing etc. The terminal is located in a private room and you can show the advisor documents via a scanner too. As we all know, winter fuel payments are now being restricted to those in receipt of Pension Credit. Less well known is that nearly a million households eligible for pension credit don't claim it and therefore miss out on housing benefit and council tax support too. Pension Credit is means tested based on income (state, any other pension and carers allowance but not most of other benefits) and savings over £10,000 reduce what you get. You can check if you are eligible and apply on-line if you are. However, as Cllr Ostrander pointed out, some of those needing to check may not use the internet so may need help from people who do. Phase 2 of SDC's Community Climate Change Fund is open for applications from parish councils and eligible groups until Friday 17th Jan.

WDC

There is budget to reduce flooding which causes road safety issues. Although WCC are not responsible for academies, Cllr Kettle is happy to speak with parents concerned about neuro-diverse pupils being excluded from any local mainstream school just because they are "difficult".

Finance

The parish council has received its first ever a CIL (Community Infrastructure Levy) payment, £1027.03.

Planning

The council had made no representation regarding treeworks at Bridge House, Attwood Cottage or land off Bridge Lane. Permission had been granted for treeworks at Elgin, the garage /garden room at Langford Cottage and changing The Garage to a residential building (to be called The Nook).

Village water pump

Despite the cost, the pump will be serviced so it remains available for use, if required.

Southam Police Liaison Meeting

Information from the the police included statistics on local crimes, awareness of local issues, near misses close to schools and feedback on Operation Bilberry which targeted speeding and vehicles without MOTs or insurance across Warwickshire. People were reminded to

report incidents on 101 or on-line. In addition, as part of Operation Snap to improve road safety, members of the public can now report and submit digital footage showing serious moving traffic offences eg driving carelessly or dangerously, overtaking on solid white lines, using a mobile phone while driving, ignoring traffic lights or dangerous driving around other road users, such as horse riders and cyclists. If anyone is interested in becoming a Special Constable there is no upper age limit but you do need to be able to commit to 16 hours per month. It was agreed that high visibility foot and car patrols were a priority for Southam and the surrounding villages.

Next meeting: 8th January 2025 at 7.45pm



LADBROKE & DEPPERS BRIDGE WI

Carol Lane

There was a big turnout for the popular Trevor Langley on Thursday 7th November in The Village Hall. Instead of the Tales of Warwick which we were expecting Trevor, a music teacher, showed a picture of Flanders and Swann and played 'The Gas Man cometh'. He told us about the lives of each man interspersed with recordings of their songs.

Michael Flanders' father was an actor and his mother a violinist. He was a Royal Navy volunteer until he contracted polio which put him in a wheel chair for the rest of his life.

Donald Swann's grandfather was a refugee from the Russian revolution. His father was a doctor, his mother a nurse and he was born in Llanelli. He was registered as a conscientious Objector and drove an ambulance in the war.

Flanders and Swann met when they worked in a Revue together at Westminster School in 1939. They were both at Christ Church, Oxford, but it was in 1948 when a chance meeting put the piano playing talents of Swann with the lyricist, Flanders, to produce the clever fit of words and music in the songs which they wrote and performed.

Their first live performance was on 31st December 1956 at the New Lindsey Theatre in Notting Hill, where the tickets ranged from 3/6 to 10/6. They filled the 650 seat theatre for three weeks with their blend of songs interspersed with comic monologues. There was no special lighting or props and there was never a need for warm up acts. They just sat side by side at the piano during the whole of the evening.

With the show 'At the Drop of a Hat', they toured England then America, Australia, New Zealand, Hong Kong, Canada and Switzerland. One can imagine the difficulties of access in a wheelchair in the 50s and 60s.

They split in 1967 as they each wanted to pursue a career on their own. Flanders became a storyteller and was a regular on the panel show '20 Questions'. He narrated the documentary 'The Royal Family' in 1969. He was married with two daughters but died of a brain haemorrhage at the age of 52.

Donald Swann started writing more serious music, including operas and operettas. He started The Swann Singers and toured with them in 1970. He also wrote hymn tunes and music for Lord of the Rings. He died of cancer in 1992.

Trevor then showed us the songwriters who had influenced Flanders and Swann and those who had been influenced by them.

In the Business meeting which followed, Sue gave us the sad news of her Mum, Pat Kennedy's death. She had also attended Jill Norgate's funeral – a previous Ladbroke WI president.

There will be a Secret Santa at the Christmas Lunch at Draycote Water so please bring a wrapped present to the value of no more than £5 on 4th December at one o'clock.

The WI Group Carol Service is at Stockton Church this year at 7 o'clock on Monday 9th December.

The meeting in January will be on Thursday, 2nd at Southam Bowls Club from 7.30 – 9.30.



LADBROKE MATTERS

David Wright

This is Us

The Village Hall and Millennium Green are separate registered charities whose admin and finance are overseen by a group of trustees. The upkeep of the Village Hall and Millennium Green is the responsibility of all of us who live in Ladbroke so our larger Ladbroke Matters team takes care of maintenance and organises fundraising events.

The **Annual General Meeting** for both charities will be on **Thursday 5th December at 7pm** in the Village Hall and is open to everybody. You will be able to meet the trustees and the team, to hear about what we do, and our future plans. There will also be an opportunity to make comments or suggestions about the hall or the green.

The more you support us with your skills, time, and/or money, the more we can continue to maintain these facilities for the benefit of us all. Our website at **www.ladbrokevillagehall.org.uk** contains photos of the interior and exterior of our village hall and general information. We always welcome new team members, so if you would like to join us get in touch via the form on the website contact page, or let us know at our AGM.

Friday Night at the Movies

We are delighted to announce that our next supper and film night is scheduled for **Friday 17th January** in the Village Hall. The film title will be announced soon – so keep an eye open for Nicky's email for more details. Contact her on **nicolalewis1958@gmail.com** if you want to be added to the film night circulation email list.

Millennium Green Play Area

If you have walked through the Millennium Green recently you will no doubt have seen our new play area. Further details are in Helen Morten's article elsewhere in this issue. Thanks to her and the planning team for their work on this.

Keep those Blue Discs piling up!

To help raise money for the new play area, we have sought some grant funding of up to £1500 from the Tesco Community fund. So when you are next shopping at Tesco in Southam, please don't forget to pick up some blue discs and vote for the Ladbroke Millennium Green play equipment. Voting closes on 12th January next year and we need our pile of tokens to be the biggest to secure the full £1500. Thanks to Helen Morten for arranging this.

Our Silver Jubilee

Next year will be the 25th anniversary of the opening of the Millennium Green, so we are

TONY'S ROOFING

Roof repairs - Tiles/Slates,
Re-pointing, Ridges,
Leadwork, Chimney repairs,
Flat roofs (torch on felt),
Velux windows fitted,
UPVC Soffits, Fascias & Guttering,
Gutters cleaned

We won't be beaten on price.

All work guaranteed

Tel: 07881 411265



FENCES & TREES



All types of fencing and gates

Tree felling and reduction

Hedge laying and trimming

Patios

Seasoned logs available

**Call Adrian Dollar on
01926 817077 or
07914 623989**

Qualified and Insured

Domestic Gas Services



**Are your radiators cold
at the bottom?
If so they need
POWERFLUSHING!**

- **POWERFLUSHING** removes the build up of sludge and sediment in your radiators which is making them less effective therefore *costing you money!*
- **POWERFLUSHING** will maximise the efficiency of your radiators ensuring you get the very best from your heating system therefore *saving you money!*

**POWERFLUSHING....the next best thing to a
new heating system!**



For a free quote call Martin on 07980 740720



Modern Homes

for everything inside your home



Call to book a free consultation on 01926 883 338



As a family business in our 56th year of trading we are proud of our exceptional levels of customer care and quality of service.

Let our award winning team manage the planning, design and installation of your new kitchen, bathroom and bedroom.

We will guide you at every stage from concept to completion, ensuring a stress free experience that delivers the room of your dreams.

We have a fantastic team of quality tradesmen from bathroom and kitchen fitters to plasterers, plumbers, builders, carpenters, tilers, decorators and many more. Whatever your project involves we can provide the help you need.

With a wide range of products from market leading British suppliers, quality and value for money is guaranteed.

No matter what your style and taste we can come up with a design perfect for you.



Find us on Facebook and Twitter

www.modernhomesleamington.co.uk

info@modernhomesleamington.co.uk

37 Longfield Road, Leamington Spa, CV31 1XB

planning to hold a village fete and possible boules tournament on the green during the late May Bank Holiday weekend to mark this milestone and to celebrate our new play area. We hope to see you all there, so please make a diary note now.

Hall Bookings

Our hall has a small kitchen, and a stage area with sound and lighting. It can accommodate up to eighty people. So to book your special celebration, or if you wish to hold regular classes or meetings, contact us **through the village hall website or telephone** Debs on 07779 225105.

From 1st October our hourly booking rates have increased to £16 per hour, or £13 for Ladbroke residents to cover the additional cost of heating during the Winter months. The rates will revert back to £15 and £12 on 1st April next year.

Non-residents may be asked to pay a £50 deposit on booking.

It's Christmas!!

The trustees and team wish all our friends and supporters a very happy Christmas and a prosperous New Year. We hope to see you all again in 2025.

Ladbroke Village Hall Millennium Draw for October 2024

£50	Steve and Val Copley	£25	Debs and Seth Brown
£50	Margaret Bosworth	£10	Avril Court
£25	Mandy Herriot	£10	Miranda Lowman
£25	Linda Spence	£10	Kate and Kevin Pickin

Margaret Bosworth



NEW PLAYGROUND EQUIPMENT IN LADBROKE

Helen Morten, Trustee Ladbroke Millennium Green

Ladbroke Millennium Green now has some brand new play equipment courtesy of the Ladbroke Millennium Green Trust, with a new picnic table to follow shortly, kindly donated by the Alibone Trust. The new equipment has given the Green a more modern and up to date feel and will hopefully be enjoyed by the children and their families in the village and beyond (see photo right).. We are still hoping to receive a donation from Tesco, to help finance the carousel/gravity bowl in the playground. To ensure we receive the maximum support available, **please continue to put the blue tokens in the Tesco Community Fund box at the front of the Southam Tesco store.**

Ladbroke Millennium Green was set up in 2000 to mark the passing of the Millennium, and it was at that stage, that the original play equipment was installed (see photo right). It has provided an excellent play area for many of our children in the village for the last



24 years, even helping the village to be nominated for an award as a Best Village in 2001! Let us hope that we can continue providing entertainment through this attraction for many more years to come.



LADBROKE PHOTOGRAPHY CLUB

Kip Warr

Photographing collections of miniature items can be tricky. If the object at the front is in sharp focus, those behind will be blurred. Focus on the furthest and the front will be fuzzy.

The way to ensure that everything is sharp is to take several pictures, each focused on a different part of the group, then use 'focus stacking' in software to combine the sharpest bit of each image into a single picture. Steve Gale brought along some miniature Warcraft model characters together with studio lights and backing sheets for us try and explained how it all worked. Other members brought watch parts and a model train. The photos here show Richard photographing the models and then how individual images are used to make a composite.

Our competition in December will be based on our earlier activities with slot cars, models and miniatures. Then we shall meet up for our annual pub meal in January. On 4th February we will have a workshop on using high shutter speeds to photograph water.

Visitors, guests and new members are all welcome to our meetings which are usually in Ladbroke Village Hall on the first Tuesday of the month. For more information please contact ladbroke.photoclub@btinternet.com

Photographs are © the photographer



Photo Stacking. One of the individual shots and the composite image by Richard Bedwell. Below: The model layout



LADBROKE GENERAL NEWS



LADBROKE HERITAGE

Jackie West

Heritage and Friendship Group

At our meeting last month we reminisced about nursery rhymes and games we played as children. Some of these were physical like Oranges & Lemons where you ran quickly through the arch of arms so your head was not "chopped off." I never played 2-Ball, probably because we didn't have a suitable window-free wall but it kept a certain young girl amused for many

many hours. Some games needed curiosity and keen eyes such as Hunt the Thimble. Treasure hunts such as Gold Bars, in reality pieces of buff card hidden around a large garden, was a firm favourite our family parties and I'm pleased to say still entertains young visitors to our home. Then of course there were the games, devised I'm sure by adults, to keep the noise level down such Dead Lions and Musical Statues.

Our gathering in December will be a bit different to our regular meetings as we will be having lunch together on the second Wednesday of the month, 11th December. In January, we will return to the usual time of 10.30am to noon and having chat on a topic over a cuppa however it will be on 8th January as the first Wednesday is a Bank Holiday. Please do contact Carol, on 814715 if you are thinking of joining us and would like more information.

TEAMS4U – LOVE IN A BOX SHOEBOX APPEAL ---

Sue Wright

Once again, we had a fantastic response to this year's appeal, and thanks to everyone's valuable contributions I was able to take a new record breaking 63 completed boxes to our area collection point in Stretton on Dunsmore. In addition, by gift-aiding donations, we were able to cover all the transportation costs, which was wonderful!

Our boxes will go to the regional centre in Evesham, from where they will be loaded onto lorries and taken directly to children in Romania, Ukraine and Moldova assisted by Teams4u contacts in those areas.

Thank you so much to everyone who was part of this initiative, and it was lovely to have some new people taking part this year. A special thanks to the Harbury Knitwits whose knitted items were once again a great addition, and also Tesco Southam who donated some essential toiletries and small toys.

Each box is such a blessing to the children and families who receive them. I plan to do it all again next year and can only encourage you to keep eyes peeled for items in the sales or charity shops over the coming months. I'm always happy to receive and store early donations including of course empty shoeboxes.

I will be holding a coffee morning in the Tom Hauley Room in May 2025 to raise funds for next year's appeal so watch this space for further news nearer the time.



CAN YOU HEAR THE CHRISTMAS BELLS? ---

Margie Bosworth

On Friday 13th December at 7.30pm in Ladbroke Church, Spa Chorale presents a programme of Christmas Music and readings with some audience participation. The evening will include a glass of mulled wine and mince pies. Everyone is welcome and no tickets required but donations will be gratefully received. Looking forward to seeing you there.



SOUTHAM AND VILLAGES TRACTOR RUN ---

Susan Moore

Friday 20th December will see a convoy of brightly decorated tractors trundling around the area, bringing festive cheer to spectators and raising money for Galanos House. They will start at Dallas Burston Polo Grounds at 5.45pm, touring Southam and the villages, expected at Harbury 8.20pm-ish, and Ladbroke at 9pm-ish. If these times are too late for your little ones then you can see them going through the centre of Southam 6.15pm-ish. It is best to

wrap up warm and arrive early at your viewing position as the timings are only approximate. Please come and support our local farmers, enjoy the procession and give generously. If you don't have cash on the night you can donate on-line at gofund.me/f4a613c4



HARBURY PARISH COUNCIL

Nicola Thompson - H&L News Correspondent

**Official minutes can be viewed on the Parish Council website
www.harbury-pc.gov.uk or obtained from the Parish Clerk, Tel: 01926 614646**

Ordinary Meeting of the Parish Council - 24th October 2024

Public Participation

Harbury Pre-School

Sarah Wilkinson, Treasurer of the Pre-school, was in attendance to give the background to the Pre-school's grant application for £2000 for essential repairs to the pre-school roof. The roof is currently leaking in several places and preliminary investigations by two separate contractors have indicated that work in the region of £10,000 - £13,000 is needed in order to make it sound and watertight. The Pre-school is in the process of applying to a number of funding sources and several suggestions for this were made, including applying to the County and District Councils, to The Screwfix Foundation and a number of others. Councillors agreed that the Pre-school was a vital village facility and agreed the grant of £2000.

Pineham Farm Allotments

Chris Hill, Treasurer of the Harbury Allotments Association, made a strong case against the council's decision to increase the annual rent for plots from £30 to £50 from Autumn 2025. The background to this decision is that Warwickshire CC (who own the site) have imposed a large increase in rent on the parish council, however, Chris argued that this could be covered by a more modest rise of £6 per year per tenant. He also pointed out that the PC has made a small profit from the allotments in recent years and compared the proposed rent with other comparable local sites which are more secure and have better access. Cllr Lockley explained that part of the reasoning for the increase was to build up a reserve which could be used against potential large costs in the future and also to improve facilities. It was agreed that a better dialogue and closer relationship with the allotment holders was needed; the various issues will be put to the allotment holders' meeting in November and their views will be reconsidered at the November PC meeting.

Reports from Other Organisations

Harbury Library

The library and parish council are considering the possibility of removing the PC as lead tenant from the lease which would then be directly between the library and the church Diocese. The first part of the work to replace the heating system has been successfully completed. The library now needs the electricity supply to be upgraded so that the new system can be used.

Harbury Primary School

The school continues to struggle with recruitment particularly for a new school caretaker and for teaching assistants.

Harbury Energy Initiative

The group has submitted a grant application for a thermal imaging camera.

Warwickshire CC

County Cllr Kettle reported that the replacement sails for Chesterton Windmill have now been manufactured. The new sails are shorter than those removed as this is consistent with the original design of the windmill. Before the sails can be installed however, a planning application needs to be approved by Stratford DC – with luck this should happen by the end of year allowing the installation to go ahead early in the New Year. Cllr Kettle also expressed his frustration with the lack of communication on the extension of the 40mph limit on Bush Heath Road. He was alerted by the Chairman to the extensive flooding on the corner of Bull Ring Farm Road and Hall Lane.

Planning

Hurdiss Farm, Bush Heath Lane

Conversion and change of use of existing general purpose store from class B8 to C3 to form two dwellings, with associated works. It was agreed that the council's response should be no representation to this application, however a comment should be made that this is the third or fourth application in a short space of time for this site and this should be taken into account when considering this and any future applications.

Future Energy Project

Paul Quinney reported that a quote for the additional work of providing a tarmac strip across the car park extension has now been provided by the contractor. Taking into account a previous overcharge, this was £3300 which was agreed by the council. The main project which includes installing the electric charging points, the installation of a battery store and other works is under the control of Warwickshire CC who have sat on £750,000 of funding for around 18 months! However, the tender documents have now been sent out and Paul was hopeful that the project should move ahead soon.

Properties

Harbury Bonfire

A risk assessment for the bonfire has been submitted and it was explained that the organisers will be putting in additional ground protection on the day. Cllr Knowles was delegated to visit the playing fields with organisers on the Friday before the event to check that the ground is not too wet and give the final go-ahead.

Hall Lane Allotments

The Clerk has contacted the contractor for an updated quote for the wall repairs but, to date, has not received a reply. Tenancy agreements for the existing tenants have now been drawn up and it was agreed to postpone advertising the vacant plots until the wall repairs have been completed.

Environment

Stiles

Permission has been received to remove two stiles on footpath SM62. A request from the Footpaths Group to replace the stile on the footpath near the doctors' surgery with a gate was turned down as cllrs felt that this was not necessary.

Tree Planting

The council reviewed a disappointing response from WCC to their proposals that additional trees could be planted on several approaches to the village including Middle Road, Temple

End and the B4452 towards Deppers Bridge. The county council's reasons for this were mainly that of visibility and the safety of their staff working on the roadside. The PC will however, still be able to plant the three trees planned for The Pound as this is their land.

Finance & General Purposes

After approving the budget and bank reconciliation, cllrs agreed a grant of £100 towards the Royal British Legion Poppy Appeal and £110 towards the costs of flyers to advertise the village market.

Seasonal Lights

The Xmas lights will be put up by volunteers on the weekend of 23rd November.

The next meeting of the parish council will be on **Thursday 28th November in the Tom Hauley Room.**

Current Parish Council members contactable via the Parish Office are:

Tim Lockley (Chairman), Julie Balch (Vice-Chair), Samantha Allen, Christopher Bradley, Kate Gard, Alan Knowles, Ed Mulley, Alex Potter, Robert Stockdale, Keith Thompson.



HARBURY SOCIETY

David Turner

Roman Warwickshire

A presentation by Dr Paul Grigsby about what the Romans did for us.

Paul Grigsby is a lecturer in classics and ancient history at Warwick University where he teaches about ancient Greece and Greek religion. He also runs the Warwick Classics Network which promotes the teaching of Classical Civilisation and Ancient History in Warwickshire schools.

Paul commenced his talk by thanking everyone for coming to hear him, saying it was lovely to speak to a packed room. He's not used to having a large audience as he normally deals with students and they don't get up very early! He confessed that he's not a Roman expert and his interest in Roman history is purely personal and while his course at the university does include Roman history his focus is on the Greek and Egyptian civilisations.



The Emperor Claudius

Paul gave a brief overview of the history of humans in Britain starting with the Palaeolithic era which began around 3.3 million years ago down to around 10,000 years ago. Footprints were discovered in 2013 at Happisburgh on the Norfolk coast which are estimated to be 900,000 years old and are the oldest known hominid footprints outside Africa.

The Mesolithic era ran from about 9000 BC to 4300 BC.

The Neolithic era ran from about 4300 BC to 2500 BC and is characterised with the introduction of farming, domestication of animals, and a change from a hunter-gatherer lifestyle to one of settlement. The Rollright Stones are an ancient Neolithic site located on the border of Oxfordshire and Warwickshire.



Sun Rising

Natural Burial Ground
and Nature Reserve

Lower Tysoe

A place of deep peace where loved ones can be laid to rest in growing woodland and wildflower meadows.

All are welcome at this beautifully managed site.

01295 688488 sunrising.co.uk



W. Goodwin & Sons Funeral Directors

38 Coventry Street, Southam
CV47 0EP

Telephone: 01926 812445

Private Chapels of Rest
Monument Service provided



Generations of Care

R. Locke & Son

Independent Family Funeral Directors – Est 1853

Caution Corner

BRAILES

OX15 5AZ

t: (01608) 685274

Southam Street

KINETON

CV35 0JN

t: (01926) 640386

No. 6 The Precinct

WELLESBOURNE

CV35 9NL

t: (01789) 840744

As a family owned business serving our local area, we take great pride in offering a dedicated and compassionate service.

For more information about our services, to view our funeral announcements and online donations, please visit

www.rlockeandson.co.uk

Traditional / Simple services - Direct Cremation
Natural burial - Pre-paid funeral plans

Golden Charter
Funeral Plans 



MB CARPENTRY AND KITCHENS

TRANSFORMING SPACES BEAUTIFULLY

Kitchens Supplied And Fitted

TEL: 07494471217

Email: Mbcarpentryandkitchens@gmail.com

www.Mbcarpentryandkitchens.co.uk

T.M. & J.M. GREY

NHBC BUILDERS

KITCHENS - BATHROOMS - WINDOWS & CONSERVATORIES

EXTENSIONS - ALTERATIONS - RENOVATIONS

GREY GABLES, 46 BANBURY ROAD, SOUTHAM CV47 1HJ

☎ Southam 01926 817744 Mobile: 07885 495384

Email: tmgrey@tiscali.co.uk

HARBURY PARISH COUNCIL

Unit 2, Bull Ring Business Centre
Church Terrace, Harbury CV33 9HL

Tel: 614646

Website: www.harbury-pc.gov.uk

Open: Monday - Thursday
10.00am - 12.00pm

CHAIRMAN:

Tim Lockley

Email: chair@harbury-pc.gov.uk

CLERK:

Alison Biddle

Email: clerk@harbury-pc.gov.uk

Parish Council meetings are
open to the Public.

To speak on any issue, please
contact the Parish Clerk

Harbury Village Library & Biblio's Café

Harbury Village Library

Browsing & Borrowing, Click and Collect, Home Delivery and Takeaway Shelves for Children's and Adults' Books, Audio Books, Jigsaws, and Board Games. Public Access Computers, WiFi access and Printing Facilities, Events & Activities, Food Bank Collections, Recycling Boxes, Art Gallery, Books & Greetings Cards by local artists for sale.

Biblio's Café

Offering a selection of hot and cold drinks, cakes and baked goods either served at your table inside the cafe or as takeaway items

Please check the Harbury & Ladbroke News, on Social Media, www.HarburyVillageLibrary.org.uk and village notice boards for information about current opening times



Harbury Village Library, The Wight School,
High Street, Harbury CV33 9HW
01926 258776

- library@harburyvillagelibrary.org.uk

The Bronze Age in Britain lasted from around 2500-700 BC, which included the arrival of the Beaker people so-called because of the pottery beakers that were often found in their burials.

The Iron Age in Britain began around 750 BC and lasted until the coming of the Romans in 43 AD. A large hoard of 394 iron currency bars was found at Meon Hill in Warwickshire in 1824. These seem to have been used prior to coins during the Iron Age period.

Roman rule in Britain began in 43 AD under the Emperor Claudius when they met fierce resistance from several tribes such as the Catuvellauni. Their chieftain, Caratacus, gave the Roman general Aulus Plautius significant problems until he was defeated in 50 AD.

For several decades the western frontier of Roman rule was marked by the Fosse Way.

Around 60 or 61 AD Boudica, queen of the Iceni tribe, led the Iceni and other tribes in an uprising against the Romans. They destroyed Camulodunum (modern Colchester) and then proceeded to do the same to Londinium (London) and then Verulamium (St Albans).

Meanwhile the Roman Governor, Gaius Suetonius, assembled a force of about 10,000 men. Legions from the west may have used the Fosse Way as a route to intercept Boudica and they chose a position to meet Boudica in a defile (a narrow pass) with a wood behind.

The British, with unprecedented numbers (230,000 according to the historian Cassius Dio) were expecting victory but the Romans stood their ground and their disciplined tactics triumphed over the Britons chaotic approach. Tacitus estimated that almost 80,000 Britons were killed compared to only 400 Romans. Boudica is said to have poisoned herself or committed suicide.

No one knows for sure where the battle actually took place, as no archaeological evidence has been discovered, although there are several theories. One theory places it at Mancetter, near Atherstone, on the Watling Street in Warwickshire.

There were four Roman forts in Warwickshire at the time of the uprising, which may have provided soldiers for the battle: Alauna (Alcester), Manduessedum (Mancetter), Tripontium (Rugby) and Lunt Fort (Baginton). Following an extensive archaeological excavation Lunt Fort has been partially reconstructed and is open to the public. Archaeology there has revealed a gyrus, a circular structure, thought to have been used for training horses and is the only known example in the Roman Empire.

With the uprising defeated, many settlements sprang up in the area with farmsteads spaced about a kilometre apart. Excavated evidence suggests a focus on stock-rearing, replacing the mixed farming practice of the Iron Age.

Roman sites in the area

Chesterton was a 'small town' sited on the Fosse Way surrounded by a defensive enclosure of which the line can still be followed as a low depression.

Excavations in the 1920s and 1960s along with aerial photography have revealed buildings in an irregular street network. No evidence of a temple at Chesterton has yet been discovered but a building with a tessellated pavement, painted plaster walls, and evidence of flue tile, suggests that the building was a bathhouse.

A Roman villa has been discovered 600m west of the church at Chesterton. A three-colour mosaic, provisionally dated from the 4th century, contains a foliage pattern surrounded by

triangular panels with foliage and fruit. Another panel has mostly been destroyed. The mosaics have been protected and reburied.

One kilometre south west of Harbury, archaeologist Ed Wilson has discovered Roman pottery. As this isn't high status it suggests the site of a farmstead.

A Constantius II coin (337-361 AD) was found in the garden of Manor Farm.

Also at Harbury, Roman coins and pottery are said to have been found either in the churchyard, or in fields to the west of the church and these are now in Warwick Museum.

The site of a Roman settlement has been identified from finds of Romano British grey ware pottery located 700m east of East Fields Farm, near Deppers Bridge.

In 1998 tesserae (small tiles) were spotted in a field near Oxhill, Warwickshire and in 2002 more tesserae appeared following harvesting so it was decided that excavation was urgently required. This revealed a mosaic with a swastika type border suggesting this was the site of a Roman villa.

Following a field walking survey at Madhill, Tysoe, the possible site of a Roman settlement has been identified. Fragments of Roman pottery, tile and quern stone were found and a resistivity survey indicates a possible villa site with earlier ring ditches.

In 2008, at Edgehill, a hoard of 1,155 silver Roman denarii coins was discovered in a small white ware pot buried in a field. The oldest coin in the hoard dates from around 190 BC over 200 years before the Romans conquered Britain. When Paul gave this talk at Kineton, it transpired that the person who helped him with the projector was the person who discovered the hoard. They can now be seen on display at the Warwickshire Museum.

During an archaeological dig at a Roman site on Edgehill in 2015, a second collection of 440 Roman silver denarii coins were unearthed, buried inside a ceramic pot. These coins range in date from 147 BC to 70 AD. The hoard is extremely rare as it contains 78 coins dating from 68-69 AD, which was a turbulent time in Roman history.

That completed Paul's talk and he then answered questions from the floor after which he was thanked by Chair, Ed Wilson, and very warmly applauded.



Three-colour mosaic



Roman Grey Ware



Coins from the Edgehill hoard

Dates for your diary in 2025

Tuesday 21st January

Annual Social at The Crown, Harbury. Details will be sent to members soon.

Tuesday 18th February

'Swifts' – a presentation by Amanda Randall.

Saturday 8th March

Coffee morning in the Tom Hauley Room.

Tuesday 18th March

'Cicely Lucas' – a presentation by Christine Cluley, award-winning historian and researcher who has worked on Heritage Education projects at Warwickshire Record Office and Museum.

Tuesday 15th April

'Archaeology in Harbury' – a presentation by Ed Wilson, archaeologist.

All talks are held in the Tom Hauley Room. Doors open 7.30pm with the presentation starting at 7.45pm. All welcome – no need to book. Free to Harbury Society members – visitors £2 (pay at the door).

If you would like further information about the Harbury Society or would like to become a member, please contact Sue Turner, Secretary, on 07917 055920, email sue@turners.co.uk or visit the website www.harburysociety.org

As the Harbury Society doesn't meet in December, the committee would like to take this opportunity of wishing everyone a very Merry Christmas and a Happy & Healthy New Year.



On 24th October 17 members enjoyed lunch at The White Hart in Ufton.

Four members went to Binley Village Hall to join other Warwickshire WIs to hear Lesley Smith performing as Florence Nightingale. She had done an amazing amount of research into the life of Florence and we all enjoyed the evening.

As we started our AGM meeting on 14th November Lin announced she had turned the meeting around! We started with a quiz and wine and cheese. During the quiz we had to match 13 forks to their names including a salad fork, a snail fork, a cocktail fork and a crab fork! We then turned to the more formal part of the meeting. Gill our treasurer reported on a successful financial year. Pam our secretary reported that we had kept our membership to 47; we had an interesting and busy year with well attended meetings and events. Pam thanked members for their input.

The present committee were re-elected but it is good to report that we welcomed Alison, Judith and Sally on to the committee. Finally Lin Hayes was confirmed as President. She acknowledged that one of our members had died in the spring and some members had sadly lost husbands during the past year. Lin thanked the present committee for their hard work and thanked all members for their support during the year. It was good to hear two of our newer members say how welcome they had felt during the year. Finally one member said it was the best AGM she had ever been to!

At our Christmas meeting on 12th December, we shall hear Nathalie Dalton-King talking about 15th Century Dining and Fine Fare – “Gruel in a Pot”. Members are invited to take part in the Secret Santa with gifts to the value of £6.

No cinema in December – the next film will be on Saturday 18th January. Details will be in the January Harbury and Ladbroke News and on Village Notice Boards.

It is with sadness that we have heard that Celia Barrett has recently passed away. Many of our older members will remember Celia as a very active member of Harbury WI before she left the village – she served on the committee for a number of years, including a spell as president. She was also active with the Warwickshire Federation and other village organisations. Our thoughts are with Celia’s family.



HARBURY THEATRE GROUP

Anna Harper

As this is being written, Harbury Theatre Group are preparing for another amazing show ‘Knickers’, a brief comedy written by Sarah Quick. This comedy is set in a small Canadian town. The mill has closed and so there are redundancies and no jobs. The people are worried, it’s up to Mary, Terri, Barb and Amanda to save the town, which they did by creating a new business venture...Sexy Knickers for all! I’m sure you have seen the show and hopefully enjoyed it as much as we did rehearsing it (and showing our cellulite to the audience!). If not, there is always our next production!

We would like to take this opportunity to thank you all for your faithful support over the years in coming to see our productions. A lot of hard work goes into putting on a production and performing to a packed out audience makes it all worth while. We hope to see you at The Shakespeare Inn for our annual Christmas Carols sing along on Monday 16th December from 7pm. Merry Christmas and we hope to see you in the New Year.



FOLK CLUB

Stephen, Maureen and Sue Crum

Folk Club Number 454

The theme for the evening was War and Peace. In the build up to the start of the evening, in the background two pieces of music were playing from Holst’s Planets Suite, Mars representing the God of War and Venus representing the God of Peace. The room was packed full of anticipation for a great evening of live music. However, Steve opened the evening with two short stories of what the horror of war brings to families with tragic losses of life - his great uncle killed on the Somme and an uncle that never was, killed in a Birmingham bombing raid.

The music began with Maureen and Sue singing ‘Sweet Peace’ and ‘Dancing at Whitsun’; it was lovely to hear Sue playing the guitar. Rik followed with songs about a son being taken by the Press Gang and the joy of being “Demobbed”. Debs read two of her poems which brought domestic war into the fray along with the battle of psychosis. Pete Mason sang ‘Willie McBride’, a song about graveside reflections together with Harvey Andrews’ ‘Margarita’.



Harbury Pharmacy

Did you know Harbury Pharmacy now offers the following NHS and Private Services:

- NHS & Private Flu Jabs
(Available from 4th October)
- Travel Vaccinations
- Anti-Malarial Tablets
- Blood Pressure Testing
- Shingles Treatment
- Rachael Cabou BDS
- Providing Facial Aesthetics and much more

**Ask in store
or call 01926 612858**



HOUSE PARTY FLOWERS

FLOWERS FOR ALL EVENTS
Weddings, Parties, Special Events,
Bespoke Workshops & Funerals
Studio located in Harbury
Contact: Katy 07470 180 220
www.housepartyflowers.co.uk
email:info@housepartyflowers.co.uk



FREE ANTIQUES VALUATION DAY

St Francis of Assisi Church Hall,
110 Warwick Road, Kenilworth CV8 1HL

**Thursday 5th December 2024 | 10am - 2pm
& Thursday 9th January 2025 | 10am - 2pm**

**Bring along your Antiques, Gold,
Jewellery, Watches, Silver and Collectables**

Items may be consigned into Auction
Free Home Visits for large/multiple items.

House clearance and downsizing advice Probate and Insurance Valuations

For further information please contact Hanson's Warwickshire 07470 459309
e:clivejones@hansonsauctioneers.co.uk www.hansonsauctioneers.co.uk
Hanson's Derbyshire, Heage Lane, Etwall, Derby, DE65 6LS

Refreshments in aid of WCS Care



Wishing all residents and businesses a **Merry Christmas**

*We would like to wish all of our customers a Merry Christmas and a Happy New Year.
From all at the Milk Shed*

*I would like to wish all my friends and neighbours in Harbury a very happy Christmas and New Year.
Joan Smith*

***Pam Parton** would like to wish all her Harbury friends 'A Merry Christmas and a very Healthy and Happy New Year.'*

*We would like to wish all our friends in Harbury a very Merry Christmas and a Happy New Year! We shall make a donation to Crisis in lieu of cards.
With all our love,
Kath, Rog & Deb Ellis*

***Gerry & Sheila Parker** wish all their friends and neighbours a very Happy Christmas and a Happy & Peaceful New Year.*

*Merry Christmas and a happy New Year to everyone I know in the village.
Eileen Dronfield*

***Geoff and Gill Thorpe** wish all their friends a Happy Christmas and a Healthy New Year.*

*We would like to wish everyone in Harbury, particularly our good friends a Happy Christmas and a Happy and Healthy 2025.
Moira, Ali & Rob Rollason xxx*



Pat and John Woodward

wish all our friends and neighbours in Harbury, a Happy Christmas and a Peaceful New Year. This year we will be supporting the Parkinson's Society.

Seasons greetings to all our friends and best wishes for the New Year.

Sue and Alan Lord

Philip & Ann Mayer wish all their friends in Harbury a

Happy Christmas & Healthy New Year. In lieu of cards we are supporting Great Ormond Street Hospital.

Gillian Hare sends greetings to all my friends in Harbury, wishing you happiness and peace.

To all our friends in Ladbroke and Harbury, we wish you a Happy Festive season.

Nicky and Gray Lewis

We wish all our neighbours and friends a Merry Christmas and a Happy New Year.

Simon & Jackie West

Ann and Michael Vincent wish all their Harbury friends and neighbours a very Happy Christmas and a Peaceful and Healthy New Year. Instead of cards this year we are making a donation to the charity Embrace the Middle East.

Barbara and David Thistlethwaite

would like to wish everyone a Happy Christmas and a Peaceful and Healthy New Year."

I wish all my Harbury Friends a very happy Christmas and a wonderful 2025.

Anne Megeney

Alan and Pauline Hayes would like to wish friends and neighbours a Happy Christmas and a Healthy New Year. A donation to Myton Hospice has been made.



New Roofs • Roof Repairs
Flat Roofs • All repointing
Dry Ridge and verge systems
Guttering
Fascia & Soffit fitted

CALL STEVE
07974918098

Richard sang 'The Squaddies Lullaby' and 'I was Dreaming'. We then had a surprise when Ruth and Jobe performed together at the club for the first time, playing and singing 'I won't take things for granted' and the WW2 classic 'I'll be seeing you'. We hope they will return. The first half finished with the Folk Club Choir singing 'Hallow's Eve' and 'Home, Lads, Home'.

The second half opened with Pete Grasby singing 'The Stranger' and Sting's 'Russians'. Jobe then returned with his amazing electronic accordion to play a solo jig 'Secret City Grove'. Michael sang a song about the charge of horses in Palestine in 1817, 'The Horses that Ride to the Guns' followed by a Strawbs number. Pete and Liz at last brought some humour to the evening with Les Barker's 'Transvestite Progression'. We all laughed for the first time of the evening. They followed with the Celtic Blessing. Further humour came along when Celia, with some assistants, recited 'Guy of Warwick', a tale of the killing of the Warwick Dun Cow. Bob told the tale of the amazing life of Bob Everet DSO, who was a Hurricane pilot and who, in 1929 had won the Grand National on a 100 to 1 outsider. He then sang a gospel song from the '70s about peace. Peter McDonald sang 'From a Distance' and the appropriate 'Peace Must Come'. The evening concluded with the choir singing a solemn song from 'War Horse', 'Only Remembered'. It had been a very full evening of entertainment with every performer at their best, which was much appreciated by the audience.

The raffle raised a generous £90 which will go to the British Legion.

December's theme is "Wind and Rain" and will be hosted by Ian.



HARBURY HERITAGE CENTRE

Bill Timson

As we put another November behind us and look forward to celebrating Christmas and the New Year, I would like to reflect on the annual event of Remembrance Sunday held on the closest Sunday to 11th November, Armistice Day, when we remember and give thanks for the people of Harbury who made the ultimate sacrifice and whose names appear on the War Memorial in Crown Street.



There are 34 names on the World War 1 plaque and 10 names on the World War 2 plaque. Some are from the same family, like the Rainbow brothers (WW1) and the Boynton brothers (WW2). The Boyntons also lost their father in World War 1 and although those people in the village who remember the dark days of World War 2, say that the War had little impact on them in terms of 'normal' village life, the shock and grief of losing a loved one, be it a neighbour, friend or member of the family would have 'hit hard' on this relatively small village in rural Warwickshire, as it did throughout the country in other cities, towns and villages.

The Blue Plaque Trail, a project carried out by volunteers and supported by the Parish Council, serves as a permanent reminder of the village men lost in 'The Great War' (WW1), as it is often called.

The plaques are manufactured in a hard, weather-resistant resin and give details of the individual and where they lived before going off to



war. Plaque number 1, Edmund Astill, is on the side of Phoenix House on the corner of Chapel Street and the High Street. It has a QR Code that enables access to the Parish Council Website where there are more in-depth details about the service men. We also have research on all 44 men, kindly donated by Sharon Hancock, in the Heritage Centre.

At the carnival back in June, we shared a stall with the Harbury Society, the theme of which was the 80th Anniversary of D-Day (6th June 1944) the turning point in WW2 when the allies invaded France and fought back the Germans to ultimately end the war in Europe.

In honour of the ten names on the war memorial from World War 2, we are seeking to buy and install Blue Plaques for them too. At the same time, we are producing a booklet that can be used as a guide to discovering the 'Trail' around the village and finding out more information on these village heroes.

As I write, we are awaiting news of grant funding to carry out this project, which the Heritage Group is undertaking with the support of the Parish Council. Ideally, we would like everything in place before the 80th anniversary of VE Day (Victory in Europe Day) on 8th May next year.

On the evening of 6th November, we welcomed the Harbury Cubs to the Heritage Centre, together with their team leaders, Simon and David. We gave a presentation on 'Harbury in World War 2' focusing on the impact of the war and how it affected village life.

On a lighter note, I found this amusing letter to Father Christmas and thought that even after 49 years much of it still holds true today.



'Sargent Timson' off to talk to the Harbury Cubs, excuse the brown boots!

 **Wishing everyone a very Happy Christmas and a healthy New Year from the Harbury Heritage Group.**

Open Days and coffee morning dates

We will be open on Sunday 22nd December 2 – 4pm – come and join us for mulled wine and mince pies!

In 2025 we are open on Tuesday 7th January 7 - 9pm and on Sunday 19th January 2 – 4pm. Entrance via the Park Lane School Gate.

Please come along on Saturday 11th January and support our fund-raising coffee morning in the Tom Hauley Room 10 to 12 noon.



HARBURY FUTURE ENERGY

Bob Sherman

Goodbye Harbury Energy Initiative. Hello Harbury Future Energy

Harbury Energy Initiative (HEI) was born in January 2010 and over the years has brought many beneficial carbon reduction improvements to the village. We were working on Net Zero before that somewhat hopeful term was invented. It has taken a while for people to

catch up with us, not that we are claiming any credit for this governmental, even international, target.

Over the years HEI has given rise to several other organisations, notably the Low Carbon Warwickshire Network and Harbury e-Wheels. The latter then created the Harbury Future Energy (HFE) electric vehicle charging hub project, of which more in a minute. This has now turned from a project into HFE Community Interest Company with aims to work on more ambitious schemes to benefit the community as well as maintain HEI's programme of more intimate measures.

At a recent meeting it was agreed that the two organisations should merge into the new HFE but continue to work on both large and small scale schemes for the village. If you have an idea, let's hear it. Even better come and join in. We need new people to help us to contribute to a sustainable future by delivering practical changes. Community Energy is an important element in the need for collective engagement in positive practical changes to cut carbon emissions. The recent terrible floods and storms in Florida and Spain have given us a foretaste of what climate change might mean for all of us from now on, if we do nothing. Better, surely, to be active and hopeful than passive and worried.

It is a while since we reported on HFE's EV charging station project. The project is now the responsibility of Warwickshire County Council. They recognise, however, that it is 'our' project and that without us they could not have attracted major government funding for their delivery of new charging sites for electric vehicles (EVs) not just here but across the county. They are, therefore, working with us and tender documents have now been issued. The cut off for applications is 22nd November with some ambitious deadlines thereafter. It has taken a while but we are progressing.

HFE would welcome new members to the Board and new enthusiastic members to help make things happen. Please contact me if you are interested on 07919 157224.



HARBURY E-WHEELS

Peter Walshe (on behalf of e-wheels)
harburywheels@gmail.com www.harburyenergy.co.uk

Crack Detective Teams spot the Murderer



Harbury Village Library hosted the specially written highly entertaining Murder Mystery "Murder on the Ocean Wave" for the benefit of Harbury e-Wheels on Friday 8th November.

A full house was on top form for this popular interactive entertainment, the latest work by John Stringer, who created an evening of twists and turns in which the audience worked out who-dunnit. The clues, statements and some downright lies were delivered by a talented cast including: Sue 'Lady Griselda Magnum' Bushill, Terry 'Sir Basil Jensen' Hunt, Trevor 'Salty Seadog' Montague, and (the murderer) Moira 'Delilah Smug, O.B.E.' Rollason.

Thanks to all who supported e-Wheels in raising £450 to continue the work in driving those in need to appointments. If anyone, or someone you know, needs free transport please register with Harbury Surgery.



HARBURY TENNIS CLUB

Colin Mercer

<https://clubspark.lta.org.uk/HarburyTC>

The Banbury Winter League fixtures are now well underway. The weekend team playing in Division 3 has made a great start winning both matches played. In the first, at home against Charlbury "B", Sue Panton, Jane Minchin, Joe Robson and Nigel Eaton romped to an 8-0 win. This was followed by another convincing 6-2 win against Hook Norton "B", and for this one Jane was joined by Sue Johnson, Andy Lewin and Alejandro Pinero. The team is sharing top position with Warwick who are the next scheduled opponents.

In the floodlit format we have both teams in Division 2 following the "A" team's relegation from Division 1 and the "B" team's promotion from Division 3. It's been a tough start for both with no sign of a win for either team yet and they occupy fifth and sixth places in the table. The "A" Team started with a trip to Banbury on a very drizzly night and lost 1-7. Eira Owen, Jeunine Crabtree, Josh Marshall and Colin Mercer fought hard against very strong opposition but only Jeunine and Josh managed to win a set. Next came Deddington at home, same result but much closer. Eira and Colin were joined by Sue Panton and James Cattrell. James and Colin halved their men's doubles rubber.



The "B" team started with a trip to Deddington. James Edge and Colin Mercer lost the opening doubles, but Eira Owen and Sue Johnson gave Harbury some hope winning a very long tiebreak set 7-6 to halve theirs. Unfortunately, the home team took both Mixed doubles and recorded a 7-1 win. For the next match, away at Byfield, Jane Minchin, Lucy Ewen and Josh Marshall joined James but suffered a 0-8 defeat.

In addition to the usual coaching programme (see below for details) we are trialling Pickleball on Fridays from 3-4pm. Pickleball was created in 1965 and it's a mixture of tennis and table tennis. It's one of the fastest growing sports! More information here: www.lta.org.uk/play/ways-to-play/pickleball

It's pay as you play, £7 per session, and we have all the bats and balls, so you just need a drink!

The other sessions are: 4.00-5.00 pm Mini Reds (4-9 years), 5.00-6.00 pm Greens (10yrs +), 6.00-7.00 pm Adult Beginners, 7.00-8.00 pm Adult Cardio. In addition, Ed Spilman runs a Ladies Coaching session from 9.30-10.30 am and can also offer coaching on Monday afternoons. For more details of any of the above, please contact Lianne Candappa at: Lianne@coolsportz.co.uk or phone/text her on 07919 104093.



GIRLGUIDING

Girlguiding Team

It has been a very busy year for Girlguiding in Harbury, from sharing cards and letters with other units all over the country for world thinking day to our first Brownie sleepover. All three units have been busy aided by a stellar cast of volunteers. Rainbows have built fires, cooked and been boating, Brownies have slept underneath giant sea turtles, been on long hikes and planned a fundraiser, and Guides have cooked independently and immersed themselves in history at Warwick castle asking all the questions. This year our Christmas fundraiser will be held at the Scout hut (behind the library) on Monday 9th December from 6pm until 7.30pm where we will have crafts, cakes and Christmas cheer. This year our nominated charity will be Birmingham Children's hospital. Hope to see many people there and if not Merry Christmas and Happy New Year from everyone at Girlguiding in Harbury.



1st HARBURY SCOUT GROUP & HARBURY EXPLORERS

Katharine GIBLIN

News from Harbury Explorers

Explorers have been busy in October/November with activities such as carving pumpkins and testing out pioneering skills by building tripods to get a candle to burn through a line of string. We have done wide games (e.g. Capture the Flag) in the woods at Burton Dassett and have helped collect wood as part of bonfire building for the annual Harbury Bonfire Night.



Over the Remembrance weekend, seven Explorers and two Leaders joined 100 others from the Leamington District at Blackwell Adventure near Bromsgrove for an action-packed weekend which included a hike, murder mystery evening, silent disco and a three-course formal dinner.

On Remembrance Sunday, Explorers participated in Remembrance ceremonies at Blackwell and at Harbury along with the other uniformed groups. As always, they did us proud at both events.



Waiting Lists for Harbury Scouting

Both Beavers (6-8 yrs) and Cubs (8-10½ yrs) are running at maximum capacity in Harbury which is great to see. We would like to grow our Scouts (10½ -14 yrs) and Explorers (14-18 yrs) sections, so if you know any young people who might be interested please email Katharine Giblin on harburyscoutgroup@hotmail.co.uk.



THE BELL INN
at
LADBROKE
VILLAGE PUB AND DINING

WHAT'S COMING UP...

WREATH MAKING WORKSHOP

Thursday 5th December - Wreath Making Workshop 6:30pm

We provide everything you need to make your wreath with the expert know how as well. We'll also provide Prosecco and some nibbles for you to enjoy whilst you are creating your wonderful wreaths. These places fill up very quickly so please book well in advance.

£50 per person - Please ask the team to book your slot!

FESTIVE QUIZ

Start revising now, Bradley is back to quiz your brains this season! Festive Baps will be served at 6:30pm ready for the Quiz to start at 8pm.

We hope to see you there!
As always you will need to book.
Monday 9th December

DECEMBER PARTIES

Enjoy your perfect Christmas with us! Whether it be a work's Christmas party or a festive gathering with family and friends our set menu is perfect for every occasion offering a choice of a two or three course meal. Available for parties of 8 or more. Ask the team for more details!

THE BELL'S FESTIVE BRUNCH

Join us for our Christmas Brunch on Monday 23rd December for a delicious Festive Menu including an exciting selection of cocktails! Booking is essential.

CHRISTMAS DAY

Join us on Christmas Day for a truly festive experience! Enjoy a three course meal including all of your festive favourites, booking is essential.

Please ask the team for more details!

MASQUERADE NEW YEAR'S EVE MURDER MYSTERY DINNER!

See in the New Year with us! Come and play detective and enjoy this immersive evening including a three course meal, midnight nibbles & fizz!

Gather your friends and family... There is a murder to be solved!
Doors open at 8pm.

Booking is essential, please ask the team for more details!

www.bellinnatladbroke.co.uk

ADVERTISING IN THE HARBURY & LADBROKE NEWS

EMAIL: ADVERTISING@HLNEWS.CO.UK

TEL: 01926 612687

	¼ PAGE	½ PAGE	FULL PAGE
1 MONTH	£12.50	£23.00	£40.50
3 MONTHS	£33.50	£59.50	£108.00
6 MONTHS	£61.00	£109.00	£198.00
12 MONTHS	£103.00	£198.00	£369.00

Adverts with payment to:

Sue Dronfield,
36 Manor Orchard, Harbury
See Diary for deadline dates

Cheques payable to 'Harbury & Ladbroke News'
or BACS details upon request



HAWTHORN
& CO

ESTATE AND LETTING AGENT

Looking to sell this winter?

Client-First Approach

Data-driven Analytics

Multi-Channel Marketing

Experienced and dedicated team

Price Promise Guarantee

*Let us show you how to achieve a
premium price*

CONTACT US NOW

01926 919553

enquiries@hawthornandco.co.uk
www.hawthornandco.co.uk

"When I began to find walking increasingly painful about four years ago I asked for advice and was directed to Health First at Southam. This was really good advice and after two appointments the problem had been solved and it continues to be solved." C.L.



reviews

ASSESSMENT ✓
DIAGNOSIS ✓
TREATMENT ✓
RESULTS ✓

Ingrowing toenail
Corn / Callus Verruca / Wart
WE CAN TREAT ALL THESE
Fungal infection Diabetic feet
Plantar fasciitis Foot pain
Bunion / Arthritis



Jonathan Small
Lead Podiatrist

Health First

Foot & Gait Clinic

www.healthfirstsoutham.co.uk

01926 811272

'We fix the feet that others can't fix'

Adult Volunteers

We always welcome enquiries from adults who might want to get involved in scouting. Please email Paul Quinney (Group Lead Volunteer) on harburygsl@hotmail.co.uk to chat about what volunteering roles are available. You don't need to have any young people in scouting to get involved.



GUIDES AND SCOUTS SUPPORT (GASS)

GASS Committee

Another year with a lot of planning for everything to go up in smoke! We hope you all enjoyed the evening and both the fire and the display. We've seen some awesome photos on Facebook (one of which I have shamelessly stolen as it was better than mine). The Bonfire and Fireworks Night is our biggest fundraiser and we are pleased to report that with your support we have raised £6,500 towards maintaining the hut and equipment and supporting the uniformed youth groups in Harbury.



This event for the community couldn't happen without our volunteers giving time and energy in the run up to the event and on the day. We would like to pay particular thanks to:

- Mike McBride and his team of volunteers for such a wonderful display of fireworks (I'm sure it gets bigger every year!).
- Joe & Paul Quinney and the team of Scout leaders and helpers who managed the magnificent bonfire.
- All of the children from our uniformed groups, their parents and other volunteers who turned out with 4x4's and trailers on a clear (yes clear!) Saturday morning to collect material for the bonfire.
- Naomi who served up hot food and drinks to our helpers.
- Our stewards and tickets team who manned the gates and kept everyone safe on site.
- Everyone who gave time in the week after the event to litter pick, rake ashes and remove bonfire debris from the field.
- Harbury Library who sold tickets and local people who provided straw and lent us a tractor.
- The Parish Council for allowing us to use the playing field and the Village Hall Committee for letting us use the hall.

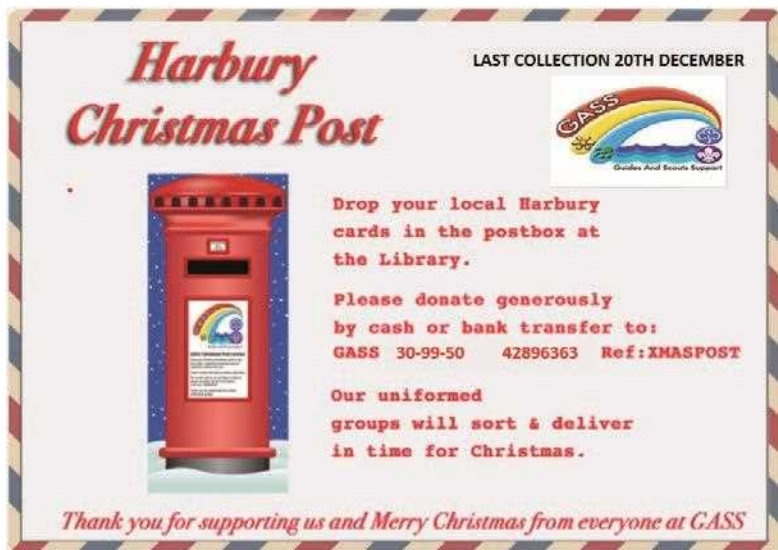
We also need to say a big "Thank You" to everyone who supported us by coming along to the event and to the 50 households who made a cash donation in return for having firewood collected from their garden. This community support is what makes for a successful event and we are pleased to be part of it.

So with the bonfire finished the G.A.S.S. committee are already working on our next fundraising opportunity

Christmas Post 2024

The Christmas post began on **Monday 25th November** and is running until **Friday 20th December**. Just in case there is anyone who is not aware of this great service provided by GASS, each year we run a village postal service that, for a generous donation, allows you to get all your Harbury village Christmas cards delivered in the busy run up to Christmas.

All funds raised help to support Harbury uniformed groups and our hut running costs, so please support us!



Harbury Village Library has been kind enough to host our special post box again this year. This will be accessible during normal opening hours Monday to Saturday.

Our popular 24hr access service will also be installed on the outside of the library door. You just need to post your cards through the letterbox and make your donation either online (preferred) or with cash in an envelope (please do not post loose cash through the door). Online donations can be made via GASS Sort Code **30-99-50** account number **42896363** Ref: **XMASPOST** please give generously!

The Scouts, Guides and Explorers will be sorting the post and our network of volunteers will be making three delivery rounds in December with the final cards arriving at their destinations in time for Christmas.

Don't forget to put the **house name/number** and the **road name** on your envelopes as we cannot deliver your cards without this information. We are able to deliver anywhere in Harbury village but unfortunately, we do not have the capacity to deliver any further afield.

That just leaves us to wish you all a very Happy Christmas and prosperous New Year from everyone at GASS.





HARBURY TODDLER GROUP

Emily Montague and Chrissie Field

Toddlers would like to thank everyone who came and supported us at our coffee morning on the 2nd November. We raised over £250 which we plan to put towards our Christmas celebration on the 16th December. Stay tuned for more details...

We have had some really fun sessions recently, including space, fireworks, pirates, and fairytales.

Parents, grandparents, carers of babies, toddlers and pre-schoolers are all welcome to join us. We have toys, sensory tuff trays, crafts, stories, snacks and singing.

We run every Monday during term time, from 10.00-11.30am in Harbury Scout Hut. The sessions cost £2 for the first child, and £1 per additional sibling. Refreshments included. Please follow us on Instagram @harbury_toddlers or on Facebook (search for Harbury Toddlers) for updates and sneak peeks.

Looking forward to seeing you and your little Toddlers at a session soon.



HARBURY PRE-SCHOOL

Staff and Committee



Autumn

We have extended our learning about Autumn to focus on woodland animals, their footprints and whether they hibernate.

Using our Autumn pebble prints, the children used playdough to make impressions of woodland creatures and the prints they make when they walk. The children quickly picked up which prints belonged to which animal and enjoying learning about the different animals, for example badgers, squirrels, deer, moles and hedgehogs and thinking about where they live, what they eat and whether they hibernate. Some of the children asked us to use the iPad to show them pictures and videos of the animals.

We used the lightbox to look at leaves and pinecones and also enjoyed using the coloured shapes to make different colours through the light.



We had a few leftover gourds and pumpkins from last half term so we added those to the mud kitchen for the children to 'excavate'. They enjoyed adding pumpkin seeds to their lotions and potions!

Diwali

We returned after half term to an Indian Role Play area with Indian clothes and artefacts for the children to explore. We learned all about Diwali, the Festival of Light and how it is celebrated. We made some lovely Rangoli patterns using stencils and paint and we also tried some Indian food during snack time. The children thoroughly enjoyed dressing up in some of the Indian clothes and wearing the bracelets and head dresses.



We also lit some battery operated candles and the children really enjoyed sitting in the dark and learning about Diva lamps.

Water Play

It is getting a bit too cold for large scale water play so instead we brought out the pipettes, water and food colouring. Using sticks and cotton pads to make a 'tree', the children added the coloured water to the cotton pads to make coloured 'leaves'. Some children enjoyed mixing the primary colours to make a brand new colour and were excited to see the change.



Outside

Outside we have been creating tunnels and dens for the children to crawl through and explore. They have really loved crawling in and out with their friends and 'hiding' in the den.

They have also been extending their physical skills by balancing on the stepping stones, using the see saw, climbing up and down the steps and jumping off and using the trampoline.

If you would like further information, or to register a child for Harbury Pre-School, please e-mail enquiries@harburypre-school.org.uk text 07907 598461 or look at the web site www.harburypre-school.org You can also find us on Facebook.



HARBURY PRIMARY SCHOOL

Lucy Bosley - Headteacher

To love, learn and grow together.

"Let us not love with words and speech but with action and in truth" 1 John 3:18

iSingPop

iSingPop have been in school for three days teaching us wonderful songs. They linked the songs in with our Christian values of love, perseverance, forgiveness, collaboration, thankfulness, trust and inclusion.



We even got to perform our songs with real stage lights and speakers twice at All Saints Church. Thank you to the church community and all our staff for making this possible.

Courageous Advocacy

School Council decided to hold a non-uniform day for Children In Need along with bringing your teddy to school for a day. This raised £233. Well done School Council.



Christmas

KS1 and reception classes have started getting ready for Christmas and learning songs and words for their nativity this year, which is Born in a Barn.

We wish you all a wonderful Christmas and a very happy 2026. Thank you for all your support in 2025.



HARBURY LIBRARY & BIBLIO'S CAFE

Michael Luntley

The Library over Christmas: the Library will be shut on 19th December for one day to enable the installation of the electricity supply for our new heating system. We will open on Friday 20th and then close for the Christmas break at noon on Saturday 21st. During the Christmas break, the old gas boiler will be de-commissioned and the pipework and radiators removed. We re-open Friday 3rd January 2025.

On the re-opening, you will probably find the Library looking a little different. Our aim is to make the whole building more integrated and to open up the space by making use of the wall space made available by the removal of the radiators and pipework. What we might manage to achieve to this end will only become clear once we get the wall spaces clear. But if it looks very different in the New Year, try it out and let us know what you think.

As previously announced, we are taking two theatre/spoken word shows from 'Live & Local' in the New Year. The first show is 'As I walked out one midsummer morning' performed by ARKangel. It's a retelling of Laurie Lee's teenage journey from the Cotswolds to the Spanish Civil War brought to life with evocative prose and a musical backdrop. Tickets are available online from TicketSource (search 'As I walked out.....') or, in the New Year, from the Library desk.

Wherever you are over the holiday period, best wishes for a peaceful and relaxing break (and some good reads!) from all at the Library.



GARDEN JOTTINGS

Christine Dakin from Bridge Nursery

Another year draws to a close and what a year it has been. The mostly abysmal weather has caused much annoyance and frustration. It has definitely affected plant sales and I know I'm not alone because the rep from the horticultural supplies company has confirmed that it is the same for many others in this business.

Grumble over, things don't seem so bad after three or four weeks of being able to work in the garden and tackle some neglected areas.

Do you remember the trend of growing living willow structures? People planted willow arches, domes, tunnels and so on. Over 25 years ago we fell for it and started a willow dome. It looked good for a few years although it needed a lot of time to weave and trim the fast growing stems. During the last few years it had become a mess and much harder to keep the shape. I made the radical decision to chop it all down and start again. Masses of dead wood has been removed by my helper Sarah, little of the original is left and that will soon be gone too. New rods will be stuck in the ground and it will then be much easier to control for the next few years. If you also have parts of the garden which are either out of control or not looking as good as you would like don't be afraid of change, it can be very satisfying.



Season's greetings to all those of you who read these ramblings.

Bridge Nursery, Tomlow Road, Napton | www.bridge-nursery.co.uk



NATURE NOTES

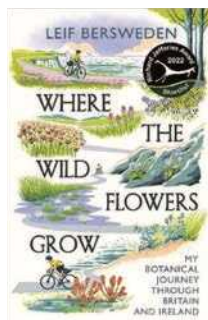
Martin & Amanda Randall

Although there is still plenty of wildlife to see in the winter months, it is not always possible to get out and about, if the weather is not so good and the days are shorter. What better, then, than to read about our natural world instead. Nature writing is a popular subject and so we thought we would review some books that we have enjoyed recently – perhaps they will give you ideas for Christmas presents too.

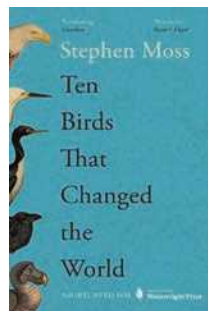
In February last year we wrote about our trip to Wistman's Wood on Dartmoor. That is an example of one of the few remaining temperate 'rainforests' in the UK, a globally rare habitat. Its lush conditions are perfect for scarce plants, fungi and lichens, as well as rare birds and mammals. You can read more about the history and ecology of these special places in Guy Shrubsole's book *The Lost Rainforests of Britain*. He identifies various locations across Britain where the forests still exist and describes the challenges these ecosystems face, such as deforestation, agricultural expansion and climate change. He also explores their cultural significance in British mythology and folklore, in legends such as the tales of King Arthur, which often depict enchanted forests as places of magic and mystery. Fortunately, the Wildlife Trusts nationally have now obtained funds to secure and restore these threatened habitats.



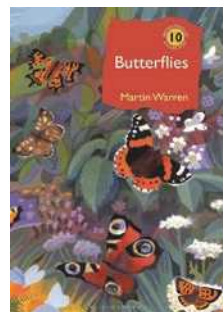
Where the Wildflowers Grow is by Leif Bersweden (yes really, botanical books by Leif and Shrub!). Leif studied orchids at Kew Garden for his PhD and has appeared on BBC TV's Springwatch. In his book, we follow Leif's journey by bicycle around Britain and Ireland, over the course of a year. He highlights the unique plants that grow in different habitats, from pine forests in Scotland to the Cornish coast. His writing style is very accessible as he extols the joy and positivity to be found through understanding nature, and why it is so important to protect our wildflowers.



If you enjoy reading about birds, we can recommend *Ten Birds that Changed the World* by Stephen Moss. Moss was producer of many BBC wildlife programmes, though now concentrates on nature writing and lecturing about wildlife. In this book he uses the example of ten bird species to describe the long relationship between birds and humanity. They are fascinating accounts both historically and environmentally. For example, he explains the long history of the way pigeons have been used for food and well as messengers, with interesting stories of their role in WW2. His chapter on egrets, and their exploitation for the feather trade contains some astonishing statistics - in the USA in the early 1900s, snowy egret feathers sold for \$32 per ounce (about \$860 in today's values), which was more than the price of gold; and from 1870 to 1920 more than 18,000 tonnes of bird skins and feathers from various species were imported into the UK solely for fashion. Under this immense pressure, many bird populations were threatened with extinction; eventually the protests against this trade led to the formation of what is now the RSPB.



We have often written about butterflies. Being popular and conspicuous means they are good indicators of the 'health' of nature around us – and there are worrying signs that all is not well. *Butterflies: A Natural History* by Martin Warren gives a clear account of our butterfly fauna, their biology and ecology. It is easy to read and illustrated with stunning photographs. Martin Warren spent his career studying butterflies and advising on their conservation – he was the Chief Executive of the Butterfly Conservation charity. His lifetime of careful research into these beautiful insects shows how and why we must act now to conserve them and reverse their declines.



If you are able to get out and about, it's often tricky to identify birds and their songs without the help of someone to teach you. Trawling through field guidebooks on your own can also be confusing and frustrating, as well as cumbersome. An excellent alternative is an identification app on a smartphone. The app we use almost daily (!) was created by Cornell University in the U.S. and is based on millions of contributions from birders around the world. Called the Merlin Bird ID app, it's a **free** guide with photos, birdsongs, and maps, downloadable from Google Play or the Apple Store. The app is for all levels of bird watchers, and can help you learn about the birds in almost any country in the world.

Merlin has two sections: a Bird ID Wizard, which by asking three simple questions about the bird you are trying to identify, offers you a list of possible matches, taking into account your geographical location and the season. The other section, that we use most, is Merlin's Sound ID, because it's often easier to hear a bird singing than to see it clearly. You simply hold out your phone and tap record to get suggestions (with accompanying photos) for who's singing. Sound ID works offline, so you can identify the birds you hear no matter where you are. It's available for birds in Europe, the US and Canada, plus some common birds of Central and South America and India. So you can use it on holiday, wherever you travel!

In the past, when we attempted to identify an unknown plant or wildflower, we photographed it and used 'Google Lens' to suggest possible species. However, because Google Lens uses a worldwide database that doesn't take into account the geographical location of the plant in question, the suggestions are not always reliable and sometimes for plants which don't even

occur in the UK! Nowadays we would recommend another free app called iNaturalist. After uploading your photograph, the app will suggest a possible identification based on your location and the season. It also connects with experts who confirm the identity of your observation. These Crowdsourced identifications help scientists understand when and where organisms occur, meaning it's a win-win for all! Not only does the app help you identify your nature photos, but by recording your observations, you are helping with research and conservation. Researchers, environmental records centres, wildlife trusts and other conservation organisations can use the data to increase their knowledge and understanding of UK biodiversity.

merlin.allaboutbirds.org



uk.inaturalist.org



HARBURY GENERAL NEWS



HARBURY DISTRICT COUNCILLOR UPDATE

Susan Ostrander (Cllr Harbury Ward)

As we move into the holiday season, I anticipate with pleasure the beautiful lights in Harbury and look forward to some time to relax, enjoy a mince pie or two and some good long walks in the 'crispy' winter countryside. I want to take this opportunity to wish everyone a peaceful Christmas and New Year.

This month I would like to let you know about the new terminal for communicating with Stratford District Council located at Southam Library and for those who, like me love some statistics, a round-up of the 'State of the District'.

As always I can be contacted on sue.ostrander@stratford-dc.gov.uk or susan4harbury@gmail.com

Customer Access Terminal Southam

For those of us out in the East of the District it is a long drive all the way to Stratford if we wish to speak to someone in the council offices there. It's an even longer journey if one attempts it by public transport! After much waiting, a new Customer Access Terminal (CAT) has been installed in Southam Library; a much shorter journey for those wanting to speak to someone at the Council.

These terminals allow you to talk, one-to-one with a customer service advisor at our headquarters in Stratford-upon-Avon. Each terminal is equipped with scanners and webcams. The scanner allows you to easily show documents to the advisors and if necessary, capture the image for processing, the webcams allow you to interact face to face for a more personal service.

The council has been working to improve access for residents. While many people can use the internet and phone, sometimes face-to-face enquiries and discussions can help. Enquiries relating to council tax, benefits, and housing can be dealt with there. We have already had

feedback that this is a welcome improvement for those residents living a long way from Stratford town.

The CAT in Southam is located at Southam Library & Information Centre, Tithe Place, High Street, Southam, CV47 0HB.

CAT operational hours:

- Monday – 09:30 - 16:00
- Tuesday – 09:30 - 16:00
- Wednesday – CLOSED
- Thursday – 09:30 - 16:00
- Friday – 09:30 - 16:00

State of the District

At the last Council meeting (14th October) the State of the District was reported upon in terms of information from different sources. It covers many different areas from health to the economy, not all of which Stratford-on-Avon District Council (SDC) can influence. It is important to note that the figures included in the report are from the most recent data available, and reference to events happening at the Council refer to the year ending 31 March 2024 for the most part. We have selected some highlights.

The population of Stratford-on-Avon District in mid-2023 was 141,929. It is estimated to have increased by 16.8% between 2013-2023. Population density mid-2023 was estimated to be 145 people per km². This places SDC in the 20% least densely populated local authorities. The population is heavily weighted towards the older age groups, with almost half the district's population – 47% - aged 50 or older.

The median house price for the District was £375,000 in the year to end March 2023, 27% above the Warwickshire median of £295,000, and 29% above the England median of £290,000. The median house price in the District has risen £130,000 or 53% over ten years since the end of March 2013. In comparison, according to the Bank of England inflation calculator, inflation over that ten year period is estimated to total 34%. The average median house price increase between 2013 and 2023 across all England and Wales authorities was 65%; Stratford-on-Avon therefore saw below-average median house price growth, falling in the bottom quarter of all authorities.

The Ratio of House Prices to Earnings was reported to be the highest ratio in the West Midlands region making homes more expensive relative to earnings both in the region and in England.

The median overall monthly **private rent** payable in the District in the year to end-March 2023 was £875. This was the third highest rent across the West Midlands, with Solihull and Warwick higher at £950 and £945 respectively. Median rent has increased by £100, or 13%, since 2019.

House Building: a total net of 1,435 new dwellings were added to the housing stock in 2022/23. This was the highest figure of net completions of all district authorities in 2022-23. (South Cambridgeshire was second with 1,320 completions.)

Affordable Housing is defined by the National Planning Policy Framework such as Social Rent; Affordable Rent; Build to Rent and Rent to Buy; Discount Market homes; First Homes; Shared Ownership; and Shared equity. In 2022/23, affordable housing made up 38% of net new dwellings, corresponding to 540 out of the total of 1,435.

Recorded Crimes: the total number of recorded crimes in the District in the year to July 2024 was 7,904 . This is a rate of 60 crimes per 1,000 people, which is the lowest rate across

Warwickshire. This reflects a slight fall on the previous year when the rate was 63 crimes per 1,000 people.

Employment: in March 2024, 14% of the population aged between 16-64 years was classed as 'economically inactive' i.e. not in work or looking for work, due to retirement, being a student, being too sick to work or some other reason. Over three quarters of people in employment were classed as employed (77%), while 23% were classed as self-employed. In August 2024 there were 1,740 residents claiming unemployment benefit in the District. These were evenly split between males and females.

The **median gross weekly earnings** in 2023 for full time workers who live in the District was £725.40. This was higher than the average for the West Midlands at £651.60, and that for Great Britain at £682.60. However, while both the West Midlands and Great British average wages have risen since 2023, those in Stratford-on-Avon have fallen slightly. Women's weekly median pay was found to be 79% that of men and the decrease in median wages for the District is driven by a fall in full time women's wages over the past year.

Further data can be found by scanning this QR or using the web address here:

(Public Pack) Agenda Document for Council, 14/10/2024 14:00



ROYAL BRITISH LEGION POPPY COLLECTION 2024

Gill Holden & Nicola Thompson

On behalf of the Royal British Legion, we would like to thank everyone who contributed to the collection in Harbury, Ufton and Chesterton this year. The following businesses and organisations were kind enough to allow us to use their premises as collection points: The Crown Inn, The Gamecock, The Shakespeare, The Salon, the Co-op, Harbury Supermarket, Fosse Garage, Bull Ring Garage, Harbury Village Library, Harbury Village Club, Chandlers



Agricultural, The White Hart and Banana Moon. We would also like to thank Harbury Primary School, All Saints' Church, Harbury Parish Council, and the door to door collectors in Ufton, Chesterton and Thwaites Estate.

Thank you also to John Holden, Phil Thompson and Bill Timson for help with collecting, counting and banking.

The total collected within the Harbury District this year was **£2,421.38** and this amount has been forwarded to the RBL. Any payments made by using the QR code will be notified to us in the coming weeks and we will update you in due course.

Many thanks to all who contributed to such a marvellous effort.

Thank you cards showing the amount raised at each outlet will be delivered.



HARBURY CHRISTMAS FAYRE

Elaine Barnden

The Christmas Fayre takes place on Saturday 7th December 2 - 4pm, at the Village Hall. Donations (or in kind) for the following gratefully received asap please:

- Chocolate for Tombola
- Bottles for Tombola (any size as long as they fit under a bottle bag)
- Red wine - mulled wine stall (Elaine)
- Cakes on the day for cafe and stall
- Candles or good items for gifts

The above can be dropped off in church or to Liz McBride, 1 Park Lane 01926 612421. Proceeds to the Heat, Light and Stone Appeal. Many thanks for your generosity!



SENIOR CITIZENS COMMITTEE UPDATE

Mike McBride (on behalf of the Harbury Senior Citizens Benefit Association)

The next event will be upon us in no time at all and that is the annual Christmas Party on **Saturday 14th December 2024 at 5.30 for a 6pm** start in Harbury Village Hall.

Invitations were delivered and returned in November so we can confirm that everyone who requested places can come along to the party.

As you know, we do not charge or ask for a donation for the party, but we do run a raffle and you can buy as many tickets as you would like. If you wish to donate raffle prizes, they can be delivered to either 1, Park Lane or 32, South Parade.

Planning for the party continues but we would ask that if you are not feeling well or can no longer attend, please let us know as soon as possible to assist our final preparations. Please contact Mike McBride on 612421 or Julie Clarke on 612066 or talk to a committee member.

The members of the committee and helpers look forward to seeing you at the party and we hope that you will enjoy yourselves.

Finally, we wish you all a Merry Christmas and a Happy New Year.



HARBURY MILK SHED

The Milkshed Team

Complimentary Glass of Mulled Wine and Mince Pie

Sunday 15th December 2024

Pop along for a complimentary glass of Mulled Wine and a Mince Pie between 2pm and 4pm or, if you prefer, a glass of Milkshake.



The Guinea pigs will be available for you to hold and there will be some calves for you to see. Christmas Greetings.



HARBURY REPAIR CAFÉ

Liz Ball

The repair cafe had a very successful session on 9th November when 28 items were brought along for advice and repair. One or two were deemed irreparable, a couple needed parts ordering, and many were repaired successfully on the day. We had eight volunteers present giving up their time to sew, sharpen, grease, clean and fix items as diverse as a trolley jack, to a girls dress to a smoothie maker.

The Repair Cafe always runs on the second Saturday of the month in Harbury Library from 2-4pm. We always put reminders on the Harbury Village Facebook group, and you can from there notify us in advance of any likely repair. You are strongly encouraged to stay and watch and assist with the repair. You might gain the skills and confidence to repair items yourself in future!



WEDNESDAY WALKERS

Gillian Hare

The continuing mild and dry weather has been great for walking, both the firm ground and the visual pleasure. The trees, especially oak, birch and beech, have held on to their leaves so late, punctuating the landscape with an amber glow. Enjoying our coffee break near Priors Marston, the view over Hellidon Lake in the golf course would not have been out of place in a Constable painting. And sharp eyed Pam spotted a migrating flock of fieldfares settling on a freshly ploughed field. If that sounds good to you, do join us. Details on the diary page.



BUMPS & BUNDLES

Carol Jackson and the Bumps Team

The group is a drop-in and an outreach from All Saints' Church. Although we ask the adults to sign in there is no need to "join" they just come along to the Tom Hauley Room (behind the church) any Tuesday morning between 10.30am and 12 noon. (Term time only.) There

are plenty of toys for the children to play with and the helpers are there to make a cup of tea/ coffee and supply them with biscuits and/or cake (often homemade). The adults that have been coming regularly say it is really good to just be able to sit and chat to other adults.

We have a good band of volunteers and so the rota is not too onerous. It can be hectic sometimes as the children grow and become more independent.

The last Bumps before Christmas will be on the 17th December and there will be a small Christmas Party to which all are invited.

We will start our meetings in January – I think we will start again on Tuesday 7th January, please look at our Facebook page for more information.

We look forward to seeing you on Tuesday mornings.



HARBURY LOCAL MARKET

Steve Ekins

There isn't a Market in December, but we would like to tell you about our success this year.

Over the ten Markets this year supporting local Community Groups and Charities we have donated £5671.

Groups helped this year are:

St Giles Church Chesterton – Harbury Tennis Club – Upper Lighthorne Junior Football Club
G.A.S.S – Harbury Rugby Club – Harbury Junior Football Club – Harbury Primary Green Team
Hereburgh Morris Dancers – Harbury Senior Citizens – Harbury Pre School

Thanks to all the residents of Harbury, Deppers Bridge and Ladbroke who have supported the Market over the year. A special thanks to our sponsors, Harbury Parish Council, Heart of England Co-op and the Harbury & Ladbroke News who distributed our market dates flyers.

If you would like to contact us, you can email us harburylocalmarket@gmail.com and also on Facebook @Harbury Local Market, please join our group for regular updates.



HARBURY SWIFT VILLAGE - UPDATE

Amanda Randall

Contact Harbury Swifts: swifts.harbury@gmail.com

I am delighted to report that a further generous donation to the Harbury Swift Project has enabled me to purchase five timer switches as well as five swift call boxes. A big thank you to the kind donors.

Swifts prefer to nest close to one another in the safety of communal colonies. Playing calls mimics the sound of a colony so prospecting swifts will come along and investigate the possibility of a potential nesting space for themselves.

The next time I write, spring will be on its way and the return of our swifts imminent! Let's hope that the newly adult swifts will be attracted by the callers and will be tempted to use Harbury's nest boxes.



SOUTHAM CHRISTMAS TRACTOR RUN 2024

Charley Peake

The Southam Christmas Tractor Run in aid of Galanos House will take place on Friday 20th December. Tractors will assemble at 4pm at Dallas Burston Polo Ground. Viewing will be open at 5pm before we set off. Times will be as listed below. All times are a rough estimate depending on amount of vehicles on the night etc. To ensure you don't miss us, be at your villages waiting in plenty of time. Keep a look out on our Facebook page - **Southam Christmas Tractor Run 2024**.

The route around Harbury coming from Ufton, will be down Butt Lane, Vicarage Lane, South Parade, Park Lane, Farm Street, Mill Street, High Street, Hall Lane.

Charity buckets will be around collecting on the night so please do support us by giving your spare change. You can also donate on our charity go funding page link gofund.me/f4a613c4 or scan the QR code.



Leave Dallas Burston between 5.45-6pm

1. Southam central - 6.15ish
2. Flying fields - 6.30ish
3. Napton - 6.50ish
4. Stockton - 7.10ish
5. Long Itchington - 7.30ish
6. Bascote - 7.50ish
7. Ufton - 8.05ish
8. Harbury - 8.20ish
9. Bishops Itchington - 8.40ish
10. Deppers Bridge - 8.50ish
11. Ladbroke - 9ish
12. Back to Dallas Burston Polo Grounds.



SOUTHAM & DISTRICT LIONS CLUB SANTA VISITS 2024

Rebecca Bourton

Once again Father Christmas has asked the members of Southam and District Lions Club to accompany him on his annual visits to Southam and some of our surrounding villages. Starting on Saturday 30th November, Santa will set out at 5pm or 5.30pm each evening and the sleigh will be stopping at four or five places during every visit.

The schedule below shows which roads he will be stopping in when visiting Harbury. For details of the time he plans to be there look out for notices placed at each stop and online. Facebook: Southam & District Lions News Page.



This year all money collected during the visits will be shared between two charities, the Friendship Project for Children and the Children's Air Ambulance.

We will be visiting Harbury on:

Monday 16th December, 5.30pm start - Harbury 1

Stopping at: Hereburgh Way, Manor Road, South Parade, Frances Road

Tuesday 17th December, 5.30pm start - Harbury 2

Stopping at: Brooks Drive, Manor Orchard, Mill Street, Dickens Road

Note: All visits are subject to change or cancellation due to weather conditions or other unforeseen circumstances.



READERS' LETTERS

Dear Editors

I would like to thank everyone who came to Tom's funeral and for all the cards, love and best wishes I and my family have received since Tom's sudden death on 21st October, it has meant a lot to us. Thank you also for your generous donations to the Alzheimer's Society. As many of you know Tom was living with dementia and physical difficulties and spent the last three months of his life at Galanos House, where the care he received was wonderful. So many comments about his ability to lift spirits, his laugh, his good humour, kindness and his sheer enjoyment of life have been heartwarming and I just hope that legacy lives on and you will smile whenever you remember him.

Thank you all again,

Joan Smith

Dear Editors

I am sorry to have to inform you of the passing away of Celia Barrett on 14th November. Celia lived in the village in South Parade for most of her life and was well known for her encyclopedic knowledge of Harbury's history. She was a member of Southam United Bowling Club and Harbury WI for many years. Sadly her health deteriorated in recent years but she could still be seen frequently at local bowls games with her partner Geoff Moran.

Regards

Ted Coupe



LOCAL FOODBANK donations of non-perishable items as listed below which supplies the surrounding area, including Harbury, can be left at:

Harbury Village Library Foyer

(Wight School when open)

e-Wheels driver

Wight School car-park on Mondays
between 11.30am - 12.30pm

Harbury Co-op

Tall basket by door

- Potatoes - tins and packets of instant mash
- Tins of meat
- Jars of pasta sauce
- Tins of spaghetti in sauce
- Tins of fruit
- Sponge puddings
- Custard
- Small bags of sugar
- UHT milk
- Toiletries: shampoo, shower gel, soap, toilet rolls and cleaning products.

A very Happy Christmas to you all from everyone at
Harbury Pharmacy

Tel: 01926 612858

**Wide range
of Verset
perfumes**

**NHS &
Private
Services**

**Agents for TOP
dry cleaners.
10% discount for 3
or more items in
Nov & Dec**



Simons Systems



Available for all your computer requirements including:
PC's & Laptops, New & used systems, Repairs & upgrades
Virus/Malware Removal, Data back & Windows re-
installation

Upgrading memory/Hard drives/Rom drives/Graphics, etc
Internet - modems fitted, wireless.

Any repairs or computer problems. ***No call out charge***

T: 01926 316 119
M: 07751 811 097

E: sales@simons-systems.co.uk
W: www.simons-systems.co.uk

Nifty Needle

Curtains and Soft Furnishing

Nifty Needle specialise in creating stylish custom curtains, blinds and soft furnishings, individually designed to create beautiful solutions.

Free measuring service.

At our shop in Kineton we now stock a range of home wares, including lamps, cushions, footstools and other items to accessorise your home.

We're open Tuesday to Friday 9:00am to 5:00pm
and Saturday 9:00am to 2:00pm.

Nifty Needle Curtain Workroom, 1 Banbury Street, Kineton, Warwickshire, CV35 0JS
Tel: 01926 641741 E-mail: info@niftyneedle.co.uk Website: www.niftyneedle.co.uk



Are you worried about spiralling moving costs?

With Alsters Kelley fixed rate conveyancing, there are no unexpected costs. Plus there is an experienced team to guide you through the stages of your move!

- Instant no obligation quote via our website
- No additional administration charges
- Personal service with allocated contacts

kind. helpful. excellent

Terena Barnacle, Associate, Chartered Legal Executive, Residential Property

01926 359357 or email terena.barnacle@alsterskelley.com



4 High Street, Southam, CV47 0HA

www.alsterskelley.com



LOVE TO DANCE? SOUTHAM CLASSES

FREE TRIAL CLASS

Ballet
Tap

Modern

Gymnastics

Musical Theatre

Street Dance

Commercial
Contemporary

Mini Movers

Funky Dance

Cheerleading

Adult Classes

★ confidence ★ fun ★ friendships

Professional Purpose Built Dance Studios in

Southam

www.loveballet.co.uk



07921 853773



SMALL GARDEN MACHINERY Service & Repairs

For service and repairs to your
push mowers, strimmers, hedge
cutters and many more small
garden machinery items
please call Aid on

07447 967861

CHRIS HILL M.C.I.A.T

LOCAL DESIGN PRACTICE TO PREPARE
PLANS FOR YOUR IDEAL HOME

EVER THOUGHT OF EXTENDING YOUR HOME?

DOES IT HAVE THE POTENTIAL TO CHANGE?

DO YOU NEED MORE SPACE?



CONTACT

CALL: 01926 613780 (EVENINGS)

07772189266 (MOBILE)

EMAIL: CHRISHILL100@BTINTERNET.COM

A Member of the Alliance of Private Sector Practitioners

Jackie Biddle Healthy Feet are Happy Feet

Foot Health Practitioner



Dip. CHIP MPS Pract
CRB Checked



- Nail Trimming
- Corn Removal
- Verruca Treatment
- Ingrown Toenails
- Calluses Reduced
- Footcare for Diabetes

Home Visits Telephone

T: 01926 612503
M: 07872 907429

WIPE-OUT WASPS

Family-run business since 2005

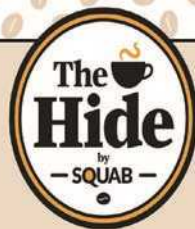
Fast response
Competitive rates
Full pest control service

For a local friendly service call

Alan or Dawn Whyte

07867 768533
01926 889711

enquire@wipeoutpestcontrol.co.uk
www.wipeoutpestcontrol.co.uk



OPEN TO THE PUBLIC

Enjoy hot and cold drinks, sandwiches, salads, and cakes from our converted shipping container at Squab Hall Farm.

Relax in our outdoor seating area surrounded by plants from the original farmhouse garden.

Local produce and crafts available for purchase.

Opening Times
Monday to Friday
9 am to 4 pm



fitrite

wardrobes of leamington spa
est 1983

1983-2023
40 years fitting
your bespoke
bedroom and
office furniture

www.fitrite.co.uk



**Call us today 01926 312654 and book your
free no obligation design appointment.**



Childcare from 3 months to 5 years of age

at Banana Moon Day Nursery Harbury.



Providing a safe, caring environment for children from 3 months to 5 years of age.

- Open 7.30am – 6.30pm
- All major childcare vouchers accepted
- Full-day and half-day sessions available
- Highly experienced, friendly staff
- Sibling discount
- Outdoor learning environment.



Outdoor learning environment



Home-cooked food

To find out more or to book a visit, call **01926 612374** or email info@bananamoon-harbury.co.uk



Banana Moon Day Nursery Harbury
Ivy Lane, Harbury, Warwickshire CV35 9HW
Call us on 01926 612374
or visit bananamoon-harbury.co.uk

*Subject to terms and conditions. *Government funding available.

Need an Electrician?



- Loss of Power
- Smoke detectors
- Fuse boards
- Fault finding
- Rewiring
- Security Lighting
- EV Charging points
- PV Solar/Battery storage
- Lights/Sockets/Cookers/Showers



LightWorks
SERVICES LTD.

For free estimates call Marlena on
07856 250 619

info@lightworksservices.co.uk

Card payments accepted. Full T&Cs on website.

FRIENDLY · RELIABLE · PROFESSIONAL

LOCAL ELECTRICIAN



Fully Insured Free Estimates

- Fault finding
- Outdoor lights & sockets
- Fuse board replacements
- Power to outbuildings: sheds, workshops & home offices
- Extra sockets & switches

“ Steve's work is excellent. I would definitely recommend him to anyone. ”

“ Very polite & efficient. The job was done on time and to a high standard. ”



ROOLIVE

Call Steve on: 07792 971018

Email: steve@roolive.co.uk

www.roolive.co.uk

Ed's Music Tuition

- Do you want to learn keyboards, guitar or ukulele with a qualified teacher with a passion for music?
- Lessons available for all ages.
- Learning an instrument is rewarding and great fun, and I can help you on your way.
- Fully DBS checked.
- Competitive rates and flexible timetable with lessons tailored to your own individual learning style and needs.
- Tuition in playing, reading music, performance and theory.
- Give me a call to discuss your musical future!



Ed Hudson, Harbury.

Mob: 07801 430029

email: eddhudson@me.com



Inside Homes

your small and mighty agent



X

Inside Homes

At Inside Homes, we deliver our comprehensive property sales and marketing services with total professionalism and integrity - because we know just what it's like to walk in your shoes.

www.insidchomeslimited.co.uk

Discover your dream home
76 Coventry Street, Southam, CV47 0EA



you have to be seen to be sold

Inside Interiors

we dont just sell homes, we make them



Inside Interiors

At Inside Interiors, we offer a range of furnishings for your home, catering to all your styling needs, whether you're moving, revamping or searching for the perfect gift.

www.insidinteriors.co.uk

In store and Online shopping available
76 Coventry Street, Southam, CV47 0EA





www.stratfordlandscapes.com

(We live in Harbury)

Small garden experts | Garden Design | Porcelain & other types of Paving
Real & artificial lawns | Stunning plant collections | Decorative Pergolas & Fences
Privacy Solutions | Low Maintenance Gardens

"Let Dave & the boys work their magic & you won't be disappointed"

Contact David Lewis on 07990975158 or visit our website



Emily Jayne's

Hair & Beauty Unisex Salon

All types of Hairdressing Services

Brazilian blow dry,

Luxury facials & pedicures

Hot stone massages

All types of waxing

Individual lash extensions

Acrylic nail extensions

Sunbed



*Bella U Aesthetics are
holding clinics in the salon
every Wednesday evening*

Opening hours:

Tuesday - Thursday 9am til 7pm

Friday 9 am til 6 pm

Saturday 8.30 am til 3 pm

Poplar Road, Bishops Itchington CV47 2RQ - Tel: 01926 611944

ADVERTISING IN THE HARBURY & LADBROKE NEWS
 EMAIL: ADVERTISING@HLNEWS.CO.UK TEL: 01926 612687

ADVERT SIZE	¼ PAGE	½ PAGE	FULL PAGE
1 MONTH	£12.50	£23.00	£40.50
3 MONTHS	£33.50	£59.50	£108.00
6 MONTHS	£61.00	£109.00	£198.00
12 MONTHS	£113.00	£198.00	£369.00

Adverts with payment to:
Sue Dronfield, 36 Manor Orchard, Harbury. See Diary for deadline dates
 Cheques payable to 'Harbury & Ladbroke News' or BACS details upon request



SUNILMEHRA
 PAINTING & DECORATING

PAINTING IS AN ART. YOUR SPACE IS OUR CANVAS.

T: 01926 613158 M: 07976 241949 E: s.mehra@btinternet.com



Your Local Professional Chimney Sweeping Service

Full Range of Chimney Sweeping Services
 Open Fires, Stoves, Rayburn and Aga's Cowl
 & Bird Guards Fitted. Bird Nest Removal



Please contact **Martin Jakeman**
 07816 337962

Email: theshiresweep@gmail.com
www.theshiresweep.co.uk



TOM RODGERS
Tree Services

- Professional Tree Care
- Tree Dismantling
- Stump Grinding
- Hedge Trimming

Free No
 Obligation
 Quote

Established 2003
 Member Arboricultural Association
 Fully Qualified & Insured



Mobile - 07958 794180 Office - 01926 710383 Email - tom@tomrogers.co.uk
www.tomrogers.co.uk

DOOR & KITCHEN STORE

Making your space a better place

Quality Fitted Kitchens – Internal & External Doors - Supply & Fit.

T. 01926 888806 or E. doorandkitchenstore@gmail.com

Alveston Place Oxford Street Leamington Spa CV32 4SN

More! Service - Expertise - Quality - Range - Value

Southam Carpets

Carpets, Vinyl flooring, Karndean, Blinds
and Curtains. Free quotes and advice.
Professional installation.



01926 814944

www.southamcarpets.co.uk
39 Coventry St. SOUTHAM

Quality, Value & Service since 1979.

THE SALON

LADIES & GENTS HAIRDRESSERS

TO BOOK AN APPOINTMENT CALL 612400 & 07778 454528

CHAPEL STREET HARBURY



10% DISCOUNT
WITH THIS ADVERT

DOMESTIC AND COMMERCIAL HIGH QUALITY
CLEANING FOR CLIENTS WHO DEMAND THE BEST

BEFORE

AFTER



Tel: 01926 889 691

Email info@steamingssam.co.uk

www.steamingsam.co.uk

WHAT WE DO:

- deep 'van mounted' carpet cleaning
- stain removal
- fabric protection
- specialist oriental rug cleaning
- hard floor, tile and grout cleaning
- upholstery cleaning
- leather restoration
- end of tenancy cleaning

...AND MORE!

STEAMING SAM specialise in professional cleaning, work is carried out by fully trained, trustworthy technicians and we are insured for your peace of mind.

Call us or check out our website for further information